

**BAT1504RE6152HTSA1**

**International Rectifier (Infineon Technologies)**

RF DIODE SCHOTTKY 4V SOT23-3

Lead free / RoHS Compliant

Discrete Semiconductor Products

[BAT1504RE6152HTSA1.pdf](#)
**Out Stock**
**0 pcs**

Minimum:1

Multiples:100

Manufacturer lead time 10 weeks

part#BAT1504RE6152HTSA1 is available, see description of BAT1504RE6152HTSA1 as below .

use the request quote form to request BAT1504RE6152HTSA1 price and lead time.

Buy Electronic Components at zeanoit.com .we are an independent distributor of electronic components with extensive inventory in stock.

The price and lead time for BAT1504RE6152HTSA1 depending on the quantity required, availability and warehouse location.Contact us today and our sales team will send you quotation soon.

Email: sales@zeanoit.com

## Shopping Process

**1**
**Confirm the product**
**2**
**submit the order**
**3**
**payment**
**4**
**wait for delivery**
**5**
**receive the goods**

## Specifications

<b>Voltage - Peak Reverse (Max):</b>	4V
<b>Supplier Device Package:</b>	PG-SOT23-3
<b>Series:</b>	-
<b>Resistance @ If, F:</b>	18 Ohm @ 5mA, 1MHz
<b>Power Dissipation (Max):</b>	-
<b>Packaging:</b>	Tape & Reel (TR)
<b>Package / Case:</b>	TO-236-3, SC-59, SOT-23-3
<b>Operating Temperature:</b>	150°C (TJ)
<b>Diode Type:</b>	Schottky - 1 Pair Series Connection
<b>Current - Max:</b>	110mA
<b>Capacitance @ Vr, F:</b>	0.25pF @ 0V, 1MHz

## Related products


**BAT1505WE6327HTSA1**

DIODE SCHOTTKY 4V 110MA SOT-323

[Infineon Technologies](#)

RFQ


**BAT1504WE6327BTSA1**

DIODE SCHOTTKY 4V 110MA SOT-323

[Infineon Technologies](#)

RFQ


**BAT1504RE6327HTSA1**

DIODE SCHOTTKY 4V 110MA SOT23

[Infineon Technologies](#)

RFQ


**BAT1502ELE6327XTMA1**

DIODE SCHOTTKY 4V 110MA TSLP-2

[Infineon Technologies](#)

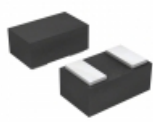
RFQ


**BAT1504WH6327XTSA1**

DIODE SCHOTTKY 4V 110MA SOT323

[Infineon Technologies](#)

RFQ


**BAT1502LRHE6327XTSA1**

DIODE SCHOTTKY 4V 110MA TSLP-2

[Infineon Technologies](#)

RFQ


**BAT15-1**
[INFINEON](#)

RFQ


**BAT1505WH6327XTSA1**

DIODE SCHOTTKY 4V 110MA SOT323

[Infineon Technologies](#)

RFQ


**BAT1502LSE6433XTMA1**

DIODE SCHOTTKY 4V 110MA TSSLP-2

[Infineon Technologies](#)

RFQ


**BAT1503WE6327HTSA1**

DIODE SCHOTTKY 4V 110MA SOD-323

[Infineon Technologies](#)

RFQ

## Guess You May Looking For


**ASTMHTV-25.000MHZ-XK-E**

OSC MEMS 25MHZ H/LVCMOS SMD

[Abracon LLC](#)

RFQ


**SIT1602BI-73-33S-32.768000G**

-40 TO 85C, 2016, 50PPM, 3.3V, 3

[SITIME](#)

RFQ


**SIT1602BI-33-28E-32.768000X**

-40 TO 85C, 5032, 50PPM, 2.8V, 3

[SITIME](#)

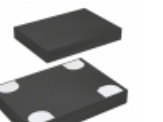
RFQ


**SIT1602BI-83-25E-28.636300X**

-40 TO 85C, 7050, 50PPM, 2.5V, 2

[SITIME](#)

RFQ


**SIT1602BI-83-25E-33.300000X**

-40 TO 85C, 7050, 50PPM, 2.5V, 3

[SITIME](#)

RFQ


**SIT1602BI-83-28N-33.333300X**

-40 TO 85C, 7050, 50PPM, 2.8V, 3

[SITIME](#)

RFQ


**SIT1602BI-83-28N-74.250000X**

-40 TO 85C, 7050, 50PPM, 2.8V, 7

[SITIME](#)

RFQ


**SIT1602BC-83-18N-74.176000X**

-20 TO 70C, 7050, 50PPM, 1.8V, 7

[SITIME](#)

RFQ


**SIT1602BC-83-25E-27.000000X**

-20 TO 70C, 7050, 50PPM, 2.5V, 2

[SITIME](#)

RFQ


**SIT1602BC-83-28S-14.000000X**

-20 TO 70C, 7050, 50PPM, 2.8V, 1

[SITIME](#)

RFQ