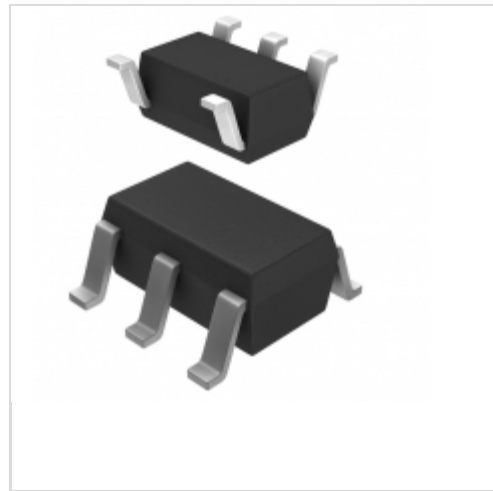


ZXCT1041E5TA



[Diodes Incorporated](#)

IC CURRENT MONITOR 1% SOT23-5

Lead free / RoHS Compliant

Integrated Circuits (ICs)

[ZXCT1041E5TA.pdf](#)

Buy Now

We can supply Diodes Incorporated ZXCT1041E5TA, use the request quote form to request ZXCT1041E5TA price, Diodes Incorporated Datasheet PDF and lead time. Zeanoit.com is a professional electronic components distributor. With 3+ Million line items of available electronic components can ship in short lead-time, over 250 thousand part numbers of electronic components in stock for immediately delivery, which may include part number ZXCT1041E5TA. The price and lead time for ZXCT1041E5TA depending on the quantity required, availability and warehouse location.

Out Stock

0 pcs

Minimum:1

Multiples:100

Manufacturer lead time 10 weeks

PRICE

3000 pcs	\$0.713
6000 pcs	\$0.686
15000 pcs	\$0.66

Shopping Process

1

Confirm the product

2

submit the order

3

payment

4

wait for delivery

5

receive the goods

Specifications

Voltage - Input:	2.7 V ~ 20 V
Supplier Device Package:	SOT-23-5
Series:	-
Sensing Method:	High-Side
Packaging:	Tape & Reel (TR)
Package / Case:	SC-74A, SOT-753
Operating Temperature:	-40°C ~ 125°C
Mounting Type:	Surface Mount
Function:	Current Monitor
Current - Output:	-
Accuracy:	±1%

Related products



ZXCT1080QE5TA

IC CURRENT MONITOR SOT25

[Diodes Incorporated](#)

RFQ



ZXCT1050E5TA

IC CURRENT MONITOR 3% SOT23-5

[Diodes Incorporated](#)

RFQ



ZXCT1030N8TA

IC CURRENT MONITOR 3% 8SOIC

[Diodes Incorporated](#)

RFQ



ZXCT1032N8TA

IC CURRENT MONITOR 8SOIC

[Diodes Incorporated](#)

RFQ



ZXCT1030X8TA

IC MONITOR CURRENT HI SIDE 8MSOP

[Diodes Incorporated](#)

RFQ



ZXCT1051E5TA

IC CURRENT MONITOR 1% SOT23-5

[Diodes Incorporated](#)

RFQ



ZXCT1030X8TC

[ZETEX](#)

RFQ



ZXCT1080E5TA

IC CURRENT MONITOR 3% SOT23-5

[Diodes Incorporated](#)

RFQ



ZXCT1050E5-7-90

[ZETEX](#)

RFQ



ZXCT1030X8

[ZETEX](#)

RFQ

Guess You May Looking For

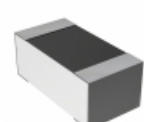


RT0805CRB0711R8L

RES SMD 11.8 OHM 0.25% 1/8W 0805

[Yageo](#)

RFQ

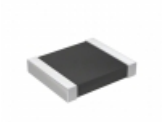


CPF0603B18R2E1

RES SMD 18.2 OHM 0.1% 1/16W 0603

[TE Connectivity Passive Product](#)

RFQ

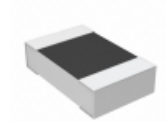


RT1210BRD074K53L

RES SMD 4.53K OHM 0.1% 1/4W 1210

[Yageo](#)

RFQ

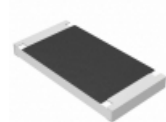


CPF0805B287KE1

RES SMD 287K OHM 0.1% 1/10W 0805

[TE Connectivity Passive Product](#)

RFQ



ERJ-S1TF1472U

RES SMD 14.7K OHM 1% 1W 2512

[Panasonic Electronic Components](#)

RFQ



AT1206CRD0768RL

RES SMD 68 OHM 0.25% 1/4W 1206

[Yageo](#)

RFQ



CPF-A-0603B12KE1

RES SMD 12K OHM 0.1% 1/16W 0603

[TE Connectivity Passive Product](#)

RFQ



RG3216P-2430-B-T1

RES SMD 243 OHM 0.1% 1/4W 1206

[Susumu](#)

RFQ



RT1206CRC07169KL

RES SMD 169K OHM 0.25% 1/4W 1206

[Yageo](#)

RFQ



RT1206CRC0748K7L

RES SMD 48.7KOHM 0.25% 1/4W 1206

[Yageo](#)

RFQ