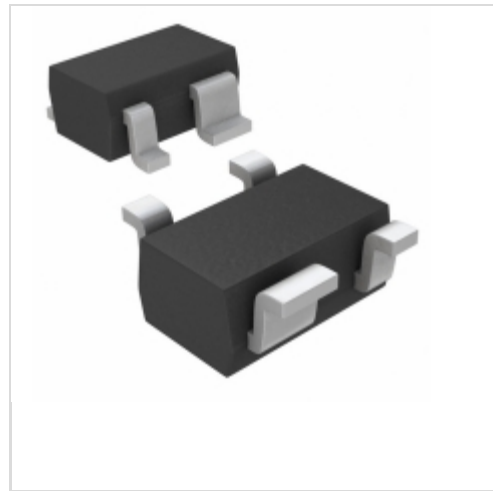


**MAX6385XS19D4-T**



**Maxim Integrated**

IC MPU/RESET CIRC 1.90V SC70-4  
Contains lead / RoHS non-compliant  
Integrated Circuits (ICs)

- [1.MAX6385XS19D4-T.pdf](#)
- [2.MAX6385XS19D4-T.pdf](#)

**Buy Now**

Images are for reference only.

See Product Specifications for product details.

If you are interested to buy MAX6385XS19D4-T, Just Email us.

Sales@zeanoit.com

our sales team will reply you within 24 hours

Shopping Process

**1**

Confirm the product

**2**

submit the order

**3**

payment

**4**

wait for delivery

**5**

receive the goods

Specifications

|                                      |                             |
|--------------------------------------|-----------------------------|
| <b>Voltage - Threshold:</b>          | 1.9V                        |
| <b>Type:</b>                         | Simple Reset/Power-On Reset |
| <b>Supplier Device Package:</b>      | SC-70-4                     |
| <b>Series:</b>                       | -                           |
| <b>Reset Timeout:</b>                | 1.12 s Minimum              |
| <b>Reset:</b>                        | Active High                 |
| <b>Packaging:</b>                    | Tape & Reel (TR)            |
| <b>Package / Case:</b>               | SC-82A, SOT-343             |
| <b>Output:</b>                       | Push-Pull, Totem Pole       |
| <b>Operating Temperature:</b>        | -40°C ~ 125°C (TA)          |
| <b>Number of Voltages Monitored:</b> | 1                           |
| <b>Mounting Type:</b>                | Surface Mount               |

Related products



**MAX6385XS19D6-T**  
IC MPU/RESET CIRC 1.90V SC70-4  
[Maxim Integrated](#)

RFQ



**MAX6385XS19D3-T**  
IC MPU/RESET CIRC 1.90V SC70-4  
[Maxim Integrated](#)

RFQ



**MAX6385XS19D5-T**  
IC MPU/RESET CIRC 1.90V SC70-4  
[Maxim Integrated](#)

RFQ



**MAX6385XS19D6-T**  
in stock  
[MAXIM](#)

RFQ



**MAX6385XS19D7-T**  
IC MPU/RESET CIRC 1.90V SC70-4  
[Maxim Integrated](#)

RFQ



**MAX6385XS19D2-T**  
IC MPU/RESET CIRC 1.90V SC70-4  
[Maxim Integrated](#)

RFQ



**MAX6385XS19D3-T**  
in stock  
[MAXIM](#)

RFQ



**MAX6385XS19D2-T**  
in stock  
[MAXIM](#)

RFQ



**MAX6385XS19D4-T**  
in stock  
[MAXIM](#)

RFQ



**MAX6385XS19D5-T**  
in stock  
[MAXIM](#)

RFQ

Guess You May Looking For



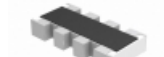
**RG3216P-6201-W-T1**  
RES SMD 6.2K OHM 0.05% 1/4W 1206  
[Susumu](#)

RFQ



**TNPW201063K4BEEY**  
RES SMD 63.4K OHM 0.1% 0.4W 2010  
[Vishay Dale](#)

RFQ



**EXB-28V3R3JX**  
RES ARRAY 4 RES 3.3 OHM 0804  
[Panasonic Electronic Components](#)

RFQ



**EXB-2HV8R2JV**  
RES ARRAY 8 RES 8.2 OHM 1506  
[Panasonic Electronic Components](#)

RFQ



**766143471GPTR7**  
RES ARRAY 7 RES 470 OHM 1450IC  
[CTS Resistor Products](#)

RFQ



**766145221AP**  
RES NTWRK 24 RES MULT OHM 1450IC  
[CTS Resistor Products](#)

RFQ



**SFR2500001804JR500**  
RES 1.8M OHM 0.4W 5% AXIAL  
[Vishay BC Components](#)

RFQ



**SFR2500007878FR500**  
RES 7.87 OHM 0.4W 1% AXIAL  
[Vishay BC Components](#)

RFQ



**CMF071M0000GNEA**  
RES 1M OHM 1/2W 2% AXIAL  
[Vishay Dale](#)

RFQ



**RNF14BAC52K3**  
RES 52.3K OHM 1/4W .1% AXIAL  
[Stackpole Electronics Inc.](#)

RFQ