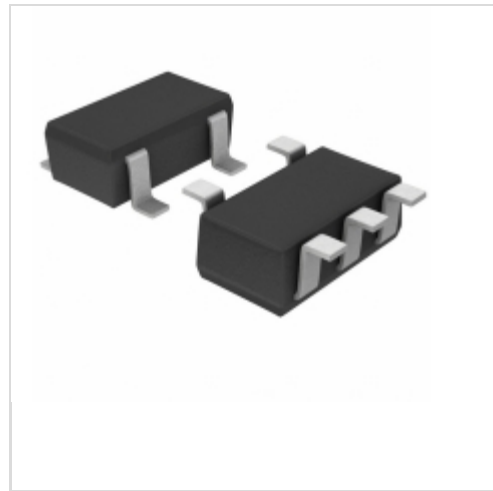


**BD46405G-TR**



**LAPIS Semiconductor**  
IC RESET CMOS 4.0V 50MS 5SSOP  
Lead free / RoHS Compliant  
Integrated Circuits (ICs)

[BD46405G-TR.pdf](#)

**Buy Now**

**Out Stock**  
**0 pcs**  
Minimum:1  
Multiples:100  
Manufacturer lead time 10 weeks

PRICE	
3000 pcs	\$0.255
6000 pcs	\$0.238
15000 pcs	\$0.229
30000 pcs	\$0.22

part#BD46405G-TR is available, see description of BD46405G-TR as below .  
use the request quote form to request BD46405G-TR price and lead time.  
Buy Electronic Components at zeanoit.com .we are an independent distributor of electronic components with extensive inventory in stock.  
The price and lead time for BD46405G-TR depending on the quantity required, availability and warehouse location.Contact us today and our sales team will send you quotation soon.  
Email: sales@zeanoit.com

Shopping Process

**1**

Confirm the product

**2**

submit the order

**3**

payment

**4**

wait for delivery

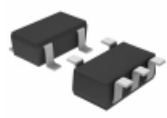
**5**

receive the goods

Specifications

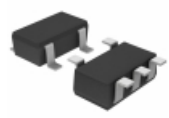
<b>Voltage - Threshold:</b>	4V
<b>Type:</b>	Simple Reset/Power-On Reset
<b>Supplier Device Package:</b>	5-SSOP
<b>Series:</b>	BD46xxx
<b>Reset Timeout:</b>	45 ms Minimum
<b>Reset:</b>	Active Low
<b>Packaging:</b>	Tape & Reel (TR)
<b>Package / Case:</b>	SC-74A, SOT-753
<b>Output:</b>	Push-Pull, Totem Pole
<b>Operating Temperature:</b>	-40°C ~ 105°C (TA)
<b>Number of Voltages Monitored:</b>	1
<b>Mounting Type:</b>	Surface Mount

Related products



**BD46401G-TR**  
IC RESET CMOS 4.0V 100MS 5SSOP  
[Rohm Semiconductor](#)

RFQ



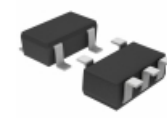
**BD46412G-TR**  
IC DETECTOR VOLT 4.1V TMR 5SSOP  
[Rohm Semiconductor](#)

RFQ



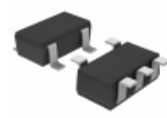
**BD46392G-TR**  
IC DETECTOR VOLT 3.9V TMR 5SSOP  
[Rohm Semiconductor](#)

RFQ



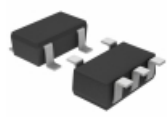
**BD46422G-TR**  
IC RESET CMOS 4.2V 200MS 5SSOP  
[Rohm Semiconductor](#)

RFQ



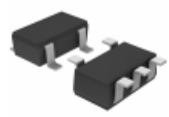
**BD46421G-TR**  
IC RESET CMOS 4.2V 100MS 5SSOP  
[Rohm Semiconductor](#)

RFQ



**BD46395G-TR**  
IC RESET CMOS 3.9V 50MS 5SSOP  
[Rohm Semiconductor](#)

RFQ



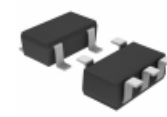
**BD46415G-TR**  
IC DETECTOR VOLT 4.1V TMR 5SSOP  
[Rohm Semiconductor](#)

RFQ



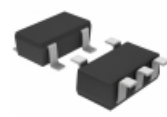
**BD46391G-TR**  
IC DETECTOR VOLT 3.9V TMR 5SSOP  
[Rohm Semiconductor](#)

RFQ



**BD46402G-TR**  
IC RESET CMOS 4.0V 200MS 5SSOP  
[Rohm Semiconductor](#)

RFQ



**BD46411G-TR**  
IC RESET CMOS 4.1V 100MS 5SSOP  
[Rohm Semiconductor](#)

RFQ

Guess You May Looking For



**RG2012V-152-B-T1**  
RES SMD 1.5K OHM 0.1% 1/8W 0805  
[Susumu](#)

RFQ



**766163101GP**  
RES ARRAY 8 RES 100 OHM 16SOIC  
[CTS Resistor Products](#)

RFQ



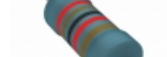
**MNR14ERAPJ472**  
RES ARRAY 4 RES 4.7K OHM 1206  
[Rohm Semiconductor](#)

RFQ



**RNF14JTD330K**  
RES 330K OHM 1/4W 5% AXIAL  
[Stackpole Electronics Inc.](#)

RFQ



**MBB02070C2102FRP00**  
RES 21K OHM 0.6W 1% AXIAL  
[Vishay BC Components](#)

RFQ



**CMF071K5000JLEA**  
RES 1.5K OHM 1/2W 5% AXIAL  
[Vishay Dale](#)

RFQ



**MBB02070C2323DRP00**  
RES 232K OHM 0.6W 0.5% AXIAL  
[Vishay BC Components](#)

RFQ



**CMF556K8100FKR6**  
RES 6.81K OHM 1/2W 1% AXIAL  
[Vishay Dale](#)

RFQ



**CMF20470R00GKR6**  
RES 470 OHM 1W 2% AXIAL  
[Vishay Dale](#)

RFQ



**SQM700JB-2K7**  
RES 2.7K OHM 7W 5% RADIAL  
[Yageo](#)

RFQ