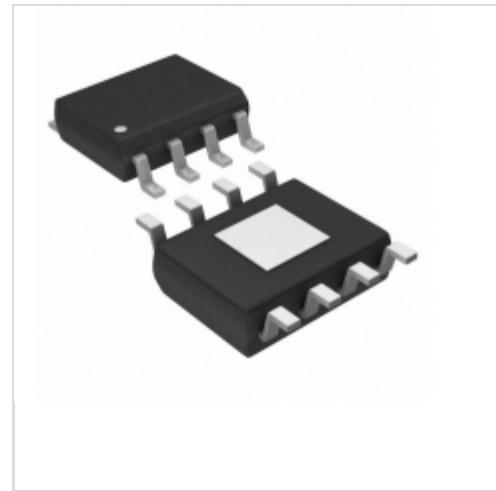


XRP7603EDB-F



Exar Corporation
IC LED DRIVER RGLTR DIM 8HSOIC
Lead free / RoHS Compliant
Integrated Circuits (ICs)

[XRP7603EDB-F.pdf](#)

Buy Now

part#XRP7603EDB-F is available, see description of XRP7603EDB-F as below .
use the request quote form to request XRP7603EDB-F price and lead time.
Buy Electronic Components at zeanoit.com .we are an independent distributor of electronic components with extensive inventory in stock.
The price and lead time for XRP7603EDB-F depending on the quantity required, availability and warehouse location.Contact us today and our sales team will send you quotation soon.
Email: sales@zeanoit.com

Shopping Process

1

Confirm the product

2

submit the order

3

payment

4

wait for delivery

5

receive the goods

Specifications

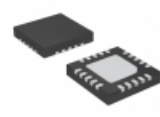
Voltage - Supply (Min):	4.5V
Voltage - Supply (Max):	29V
Voltage - Output:	-
Type:	DC DC Regulator
Topology:	Step-Down (Buck)
Supplier Device Package:	8-HSOICN
Series:	-
Packaging:	Tube
Package / Case:	8-SOIC (0.154", 3.90mm Width) Exposed Pad
Operating Temperature:	-40°C ~ 125°C (TJ)
Number of Outputs:	1
Mounting Type:	Surface Mount
Internal Switch(s):	Yes
Frequency:	1.2MHz
Dimming:	Analog, PWM
Current - Output / Channel:	500mA
Applications:	Lighting

Related products



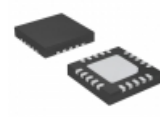
XRP7603EVB
EVAL BOARD FOR XRP7603
[Exar Corporation](#)

RFQ



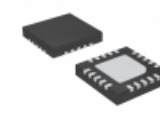
XRP6840BILBTR-F
IC LED DRIVER RGLTR DIM 20TQFN
[Exar Corporation](#)

RFQ



XRP6840AILB-F
IC LED DRIVER RGLTR DIM 20TQFN
[Exar Corporation](#)

RFQ



XRP6840BILB-F
IC LED DRIVER RGLTR DIM 20TQFN
[Exar Corporation](#)

RFQ



XRP7604E
[SIPEX](#)

RFQ



XRP7604EDBTR-F
IC LED DRIVER RGLTR DIM 1A 8SOIC
[Exar Corporation](#)

RFQ



XRP7604EDB-F
IC LED DRIVER RGLTR DIM 8HSOIC
[Exar Corporation](#)

RFQ



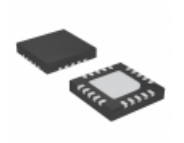
XRP6840EVB
EVAL BOARD FOR XRP6840
[Exar Corporation](#)

RFQ



XRP7603EDBTR-F
IC LED DRIVER RGLTR DIM 8SOIC
[Exar Corporation](#)

RFQ



XRP6840AILBTR-F
IC LED DRIVER RGLTR DIM 20TQFN
[Exar Corporation](#)

RFQ

Guess You May Looking For



RG1005N-5111-B-T5
RES SMD 5.11KOHM 0.1% 1/16W 0402
[Susumu](#)

RFQ



PAT0805E3010BST1
RES SMD 301 OHM 0.1% 1/5W 0805
[Vishay Thin Film](#)

RFQ



PAT0805E1302BST1
RES SMD 13K OHM 0.1% 1/5W 0805
[Vishay Thin Film](#)

RFQ



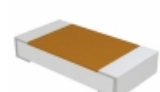
RG2012N-2051-W-T1
RES SMD 2.05KOHM 0.05% 1/8W 0805
[Susumu](#)

RFQ



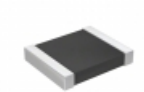
RT2512BKE071K69L
RES SMD 1.69K OHM 0.1% 3/4W 2512
[Yageo](#)

RFQ



TNPW1206150RBEEN
RES SMD 150 OHM 0.1% 1/4W 1206
[Vishay Dale](#)

RFQ



RT1210BRB07127RL
RES SMD 127 OHM 0.1% 1/4W 1210
[Yageo](#)

RFQ



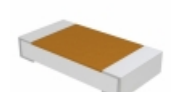
RG2012V-5491-D-T5
RES SMD 5.49K OHM 0.5% 1/8W 0805
[Susumu](#)

RFQ



RT0603WRB0719K1L
RES SMD 19.1K OHM 1/10W 0603
[Yageo](#)

RFQ



TNPW12061M74BEEN
RES SMD 1.74M OHM 0.1% 1/4W 1206
[Vishay Dale](#)

RFQ