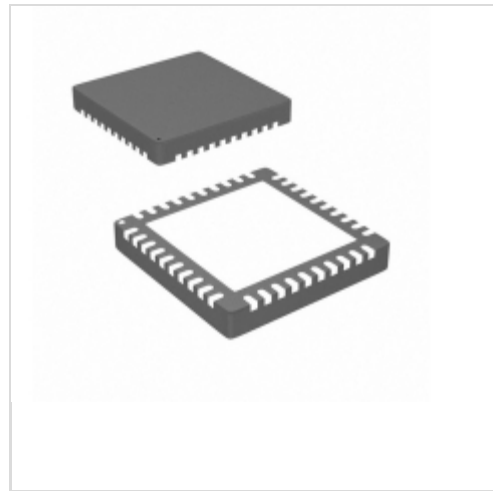


MC33882EP



[NXP Semiconductors / Freescale](#)

IC SWITCH LO SIDE 6OUT 32-QFN

Lead free / RoHS Compliant

Integrated Circuits (ICs)

[MC33882EP.pdf](#)

[Buy Now](#)

We can supply MC33882EP, use the request quote form to request MC33882EP price and lead time. Zeano is a professional electronic components distributor. With 3+ Million line items of available electronic components can ship in short lead-time, over 250 thousand part numbers of electronic components in stock for immediately delivery, which may include part number MC33882EP. The price and lead time for MC33882EP depending on the quantity required and warehouse location. Contact us and our sales representative will provide you price. We look forward to work with you.

Shopping Process



Confirm the product



submit the order



payment



wait for delivery

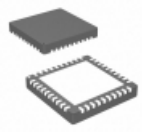


receive the goods

Specifications

Voltage - Supply (Vcc/Vdd):	4.5 V ~ 5.5 V
Voltage - Load:	8 V ~ 25 V
Switch Type:	General Purpose
Supplier Device Package:	32-QFN-EP (7x7)
Series:	-
Rds On (Typ):	400 mOhm
Ratio - Input:Output:	1:1
Packaging:	Tray
Package / Case:	32-VQFN Exposed Pad
Output Type:	N-Channel
Output Configuration:	Low Side
Operating Temperature:	-40°C ~ 150°C (TJ)
Number of Outputs:	6
Interface:	SPI, Parallel
Input Type:	-
Features:	-
Fault Protection:	Current Limiting (Fixed), Open Load Detect, Over Voltage
Current - Output (Max):	-

Related products



MC33882FC

IC SW LO SIDE 6-OUTPUT 32-QFN
[NXP USA Inc.](#)

[RFQ](#)



MC33882DW

[FREE](#)

[RFQ](#)



MC33882DHR2

IC SW LO SIDE 6-OUTPUT 30-HSOP
[NXP USA Inc.](#)

[RFQ](#)



MC33882PEK

IC DRIVER LO SIDE 6CH 32SOIC
[NXP USA Inc.](#)

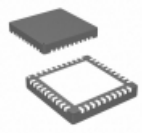
[RFQ](#)



MC33882DHR2

in stock
[FREESCALE](#)

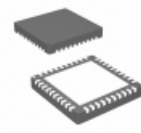
[RFQ](#)



MC33882EPR2

IC SWITCH LO SIDE 6OUT 32-QFN
[NXP USA Inc.](#)

[RFQ](#)



MC33882FCR2

IC SW LO SIDE 6-OUTPUT 32-QFN
[NXP USA Inc.](#)

[RFQ](#)



MC33882DH

IC SWITCH 6X LOW-SIDE 30-HSOP
[NXP USA Inc.](#)

[RFQ](#)



MC33882EP

in stock
[FREESCALE](#)

[RFQ](#)



MC33882PEKR2

IC DRIVER LO SIDE 6CH 32SOIC
[NXP USA Inc.](#)

[RFQ](#)

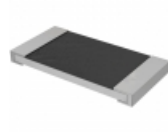
Guess You May Looking For



PFS35-0R3F1

RES SMD 0.3 OHM 1% 35W TQ263
[Riedon](#)

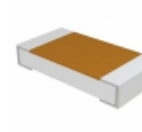
[RFQ](#)



HVCB2512JTL240K

RES SMD 240K OHM 5% 2W 2512
[Stackpole Electronics Inc.](#)

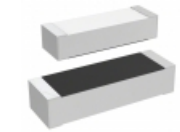
[RFQ](#)



D55342E07B475ART5

RES SMD 475 OHM 0.1% 1/4W 1206
[Vishay Dale](#)

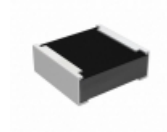
[RFQ](#)



M55342E04B4B99RT5

RES SMD 4.99KOHM 0.1% 0.15W 1505
[Vishay Dale](#)

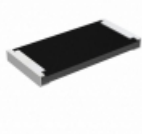
[RFQ](#)



RCP0505B36R0JED

RES SMD 36 OHM 5% 5W 0505
[Vishay Dale](#)

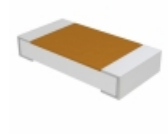
[RFQ](#)



RCP2512B100RGS6

RES SMD 100 OHM 2% 22W 2512
[Vishay Dale](#)

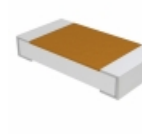
[RFQ](#)



D55342E07B110BRT0

RES SMD 110K OHM 0.1% 1/4W 1206
[Vishay Dale](#)

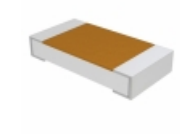
[RFQ](#)



D55342K07B383BRWS

RES SMD 383K OHM 0.1% 1/4W 1206
[Vishay Dale](#)

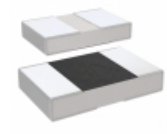
[RFQ](#)



D55342H07B820GPWS

RES SMD 820 OHM 2% 1/4W 1206
[Vishay Dale](#)

[RFQ](#)



M55342K11B7E15RWSV

RES SMD 7.15K OHM 1% 1/20W 0402
[Vishay Dale](#)

[RFQ](#)