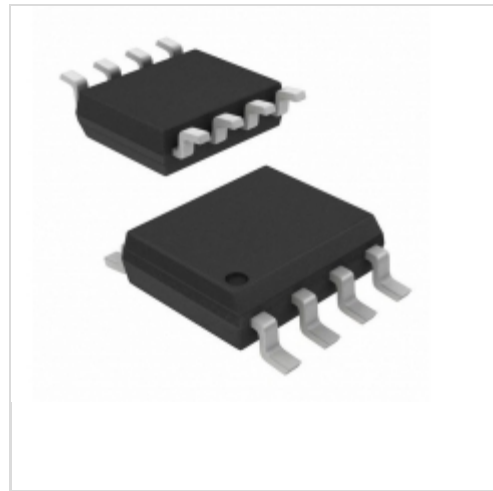


## ICE3AS03LJGXUMA1



### International Rectifier (Infineon Technologies)

IC OFFLINE CTRLR SMPS CM 8DSO

Lead free / RoHS Compliant

Integrated Circuits (ICs)

[ICE3AS03LJGXUMA1.pdf](#)

**Buy Now**

We can supply ICE3AS03LJGXUMA1, use the request quote form to request ICE3AS03LJGXUMA1 price and lead time. Zeano is a professional electronic components distributor. With 3+ Million line items of available electronic components can ship in short lead-time, over 250 thousand part numbers of electronic components in stock for immediately delivery, which may include part number ICE3AS03LJGXUMA1. The price and lead time for ICE3AS03LJGXUMA1 depending on the quantity required and warehouse location. Contact us and our sales representative will provide you price. We look forward to work with you.

**In Stock**

**23 pcs**

Minimum: 1

Multiples: 100

Manufacturer lead time 10 weeks

#### PRICE

1 pcs	\$1.16
10 pcs	\$1.034
100 pcs	\$0.806
500 pcs	\$0.666
1000 pcs	\$0.526

### Shopping Process

**1**

Confirm the product

**2**

submit the order

**3**

payment

**4**

wait for delivery

**5**

receive the goods

### Specifications

<b>Voltage - Supply (Vcc/Vdd):</b>	10.5 V ~ 25 V
<b>Voltage - Start Up:</b>	18V
<b>Voltage - Breakdown:</b>	-
<b>Topology:</b>	Flyback
<b>Supplier Device Package:</b>	PG-DSO-8
<b>Series:</b>	-
<b>Power (Watts):</b>	-
<b>Packaging:</b>	Original-Reel®
<b>Package / Case:</b>	8-SOIC (0.154", 3.90mm Width)
<b>Output Isolation:</b>	Isolated
<b>Operating Temperature:</b>	-25°C ~ 130°C (TJ)
<b>Mounting Type:</b>	Surface Mount
<b>Internal Switch(s):</b>	No
<b>Frequency - Switching:</b>	100kHz
<b>Fault Protection:</b>	Current Limiting, Open Loop, Over Load, Over Temperature, Over Voltage
<b>Duty Cycle:</b>	75%
<b>Control Features:</b>	-

### Related products



**ICE3B0365**

[INFINEON](#)

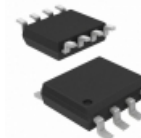
RFQ



**ICE3B0365J-2**

[Infineon](#)

RFQ

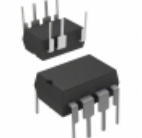


**ICE3AS02G**

IC OFFLINE CTRLR SMPS CM 8DSO

[Infineon Technologies](#)

RFQ

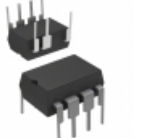


**ICE3AR4780JZXKLA1**

IC OFFLINE CTRLR SMPS CM 7DIP

[Infineon Technologies](#)

RFQ

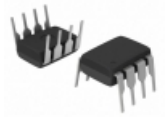


**ICE3AR4780VJZXKLA1**

IC OFFLINE CTRLR SMPS CM 7DIP

[Infineon Technologies](#)

RFQ



**ICE3B0365JFKLA1**

IC OFFLINE CTRLR SMPS OTP 8DIP

[Infineon Technologies](#)

RFQ



**ICE3B0265**

[INF](#)

RFQ



**ICE3B0365J**

[INFINEO](#)

RFQ



**ICE3AS03LJG**

[INFINEO](#)

RFQ



**ICE3AS02**

IC OFFLINE CTRLR SMPS CM 8DIP

[Infineon Technologies](#)

RFQ

### Guess You May Looking For



**ERJ-L14UJ85MU**

RES SMD 0.085 OHM 5% 1/3W 1210

[Panasonic Electronic Components](#)

RFQ

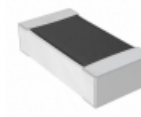


**RNCF1206DKE4R64**

RES SMD 4.64 OHM 0.5% 1/8W 1206

[Stackpole Electronics Inc.](#)

RFQ



**RNCF0603BTE845K**

RES SMD 845K OHM 0.1% 1/10W 0603

[Stackpole Electronics Inc.](#)

RFQ

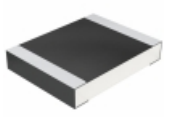


**RG1005P-1132-B-T5**

RES SMD 11.3KOHM 0.1% 1/16W 0402

[Susumu](#)

RFQ



**CRCW12103K00FKEAHP**

RES SMD 3K OHM 1% 3/4W 1210

[Vishay Dale](#)

RFQ



**RT1206CRE07130RL**

RES SMD 130 OHM 0.25% 1/4W 1206

[Yageo](#)

RFQ



**AT0402CRD072K43L**

RES SMD 2.43K OHM 1/16W 0402

[Yageo](#)

RFQ

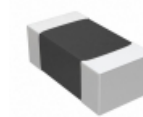


**RNCF0805BTE18R2**

RES SMD 18.2 OHM 0.1% 1/8W 0805

[Stackpole Electronics Inc.](#)

RFQ



**RNCF0402BKE84K5**

RES SMD 84.5KOHM 0.1% 1/16W 0402

[Stackpole Electronics Inc.](#)

RFQ



**AT0402CRD07470RL**

RES SMD 470 OHM 0.25% 1/16W 0402

[Yageo](#)

RFQ

