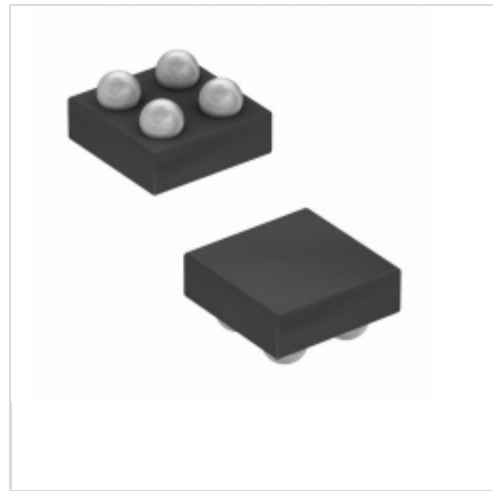


SIP32455DB-T2-GE1



Vishay / Siliconix

IC SW W/CTRL SLEW RATE WCSP4

Lead free / RoHS Compliant

Integrated Circuits (ICs)

[SIP32455DB-T2-GE1.pdf](#)

Buy Now

We can supply SIP32455DB-T2-GE1, use the request quote form to request SIP32455DB-T2-GE1 price and lead time. Zeano is a professional electronic components distributor. With 3+ Million line items of available electronic components can ship in short lead-time, over 250 thousand part numbers of electronic components in stock for immediately delivery, which may include part number SIP32455DB-T2-GE1. The price and lead time for SIP32455DB-T2-GE1 depending on the quantity required and warehouse location. Contact us and our sales representative will provide you price. We look forward to work with you.

Out Stock

0 pcs

Minimum: 1

Multiples: 100

Manufacturer lead time 10 weeks

PRICE

3000 pcs	\$0.261
6000 pcs	\$0.243
15000 pcs	\$0.234
30000 pcs	\$0.225

Shopping Process

1

Confirm the product

2

submit the order

3

payment

4

wait for delivery

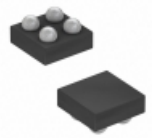
5

receive the goods

Specifications

Voltage - Supply (Vcc/Vdd):	Not Required
Voltage - Load:	0.8 V ~ 2.5 V
Switch Type:	General Purpose
Supplier Device Package:	4-WCSP (0.79x0.79)
Series:	MICRO FOOT®
Rds On (Typ):	28 mOhm
Ratio - Input:Output:	1:1
Packaging:	Tape & Reel (TR)
Package / Case:	4-UFBGA, CSPBGA
Output Type:	N-Channel
Output Configuration:	High Side
Operating Temperature:	-40°C ~ 125°C (TJ)
Number of Outputs:	1
Interface:	On/Off
Input Type:	Non-Inverting
Features:	Slew Rate Controlled
Fault Protection:	Reverse Current
Current - Output (Max):	1.2A

Related products



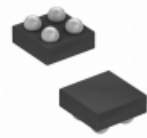
SIP32462DB-T2-GE1
IC SW W/CTRL SLEW RATE WCSP
[Vishay Siliconix](#)

RFQ



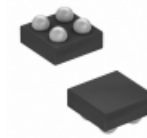
SIP32448DNP-T1-GE4
IC LOAD SWITCH TDFN4
[Vishay Siliconix](#)

RFQ



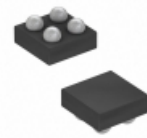
SIP32452DB-T2-GE1
IC LOAD SWITCH 4MICROFOOT
[Vishay Siliconix](#)

RFQ



SIP32453DB-T2-GE1
IC LOAD SWITCH 4MICROFOOT
[Vishay Siliconix](#)

RFQ



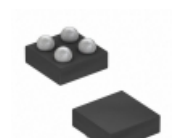
SIP32461DB-T2-GE1
IC SW W/CTRL SLEW RATE WCSP
[Vishay Siliconix](#)

RFQ



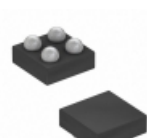
SIP32467DB-T2-GE1
LOAD SWITCH 4WCSP
[Vishay Siliconix](#)

RFQ



SIP32454DB-T2-GE1
IC SW W/CTRL SLEW RATE WCSP4
[Vishay Siliconix](#)

RFQ



SIP32451DB-T2-GE1
IC SWITCH HIGH SIDE N-CH WCSP4
[Vishay Siliconix](#)

RFQ



SIP32458DB-T2-GE1
IC SW W/CTRL SLEW RATE WCSP6
[Vishay Siliconix](#)

RFQ



SIP32459DB-T2-GE1
IC SW W/CTRL SLEW RATE WCSP6
[Vishay Siliconix](#)

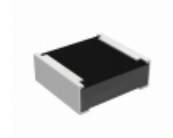
RFQ

Guess You May Looking For



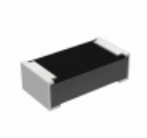
PFS35-270RF1
RES SMD 270 OHM 1% 35W TO263
[Riedon](#)

RFQ



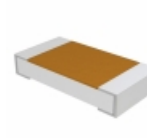
RCP0505B56R0GEC
RES SMD 56 OHM 2% 5W 0505
[Vishay Dale](#)

RFQ



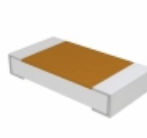
RCP0603B130RGS6
RES SMD 130 OHM 2% 3.9W 0603
[Vishay Dale](#)

RFQ



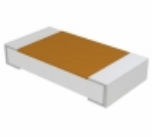
D55342H07B1B58RWS
RES SMD 1.58K OHM 0.1% 1/4W 1206
[Vishay Dale](#)

RFQ



D55342K07B1F00RTSV
RES SMD 1M OHM 1% 1/4W 1206
[Vishay Dale](#)

RFQ



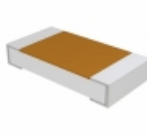
D55342H07B100DRTO
RES SMD 100 OHM 1% 1/4W 1206
[Vishay Dale](#)

RFQ



M55342K06B1B21RWS
RES SMD 1.21KOHM 0.1% 0.15W 0805
[Vishay Dale](#)

RFQ



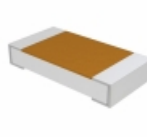
D55342E07B126BRTI
RES SMD 126K OHM 0.1% 1/4W 1206
[Vishay Dale](#)

RFQ



Y404710K0000T19W
RES SMD 10K OHM 0.01% 1/10W 1505
[Vishay Foil Resistors \(Division of Vishay Preciso\)](#)

RFQ



D55342K07B127BRWI
RES SMD 127K OHM 0.1% 1/4W 1206
[Vishay Dale](#)

RFQ

