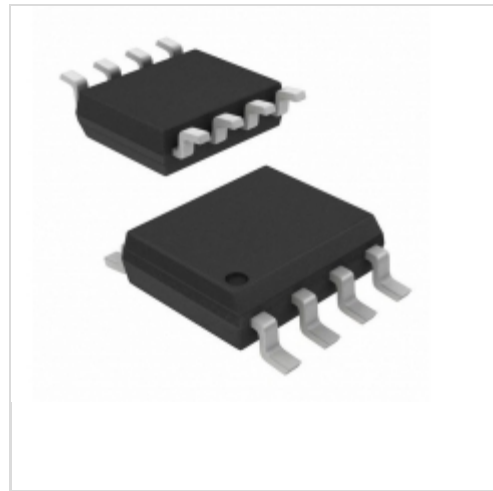


**IR2183S**



**International Rectifier (Infineon Technologies)**

IC DRIVER HALFBRIDGE 600V 8-SOIC  
Contains lead / RoHS non-compliant  
Integrated Circuits (ICs)

[IR2183S.pdf](#)

**Buy Now**

Images are for reference only.

See Product Specifications for product details.

If you are interested to buy IR2183S, Just Email us.

Sales@zeanoit.com

our sales team will reply you within 24 hours

Shopping Process

**1**

Confirm the product

**2**

submit the order

**3**

payment

**4**

wait for delivery

**5**

receive the goods

Specifications

<b>Voltage - Supply:</b>	10 V ~ 20 V
<b>Supplier Device Package:</b>	8-SOIC
<b>Series:</b>	-
<b>Rise / Fall Time (Typ):</b>	40ns, 20ns
<b>Packaging:</b>	Tube
<b>Package / Case:</b>	8-SOIC (0.154", 3.90mm Width)
<b>Operating Temperature:</b>	-40°C ~ 150°C (TJ)
<b>Number of Drivers:</b>	2
<b>Mounting Type:</b>	Surface Mount
<b>Logic Voltage - VIL, VIH:</b>	0.8V, 2.7V
<b>Input Type:</b>	Inverting, Non-Inverting
<b>High Side Voltage - Max (Bootstrap):</b>	600V
<b>Gate Type:</b>	IGBT, N-Channel MOSFET
<b>Driven Configuration:</b>	Half-Bridge
<b>Current - Peak Output (Source, Sink):</b>	1.9A, 2.3A
<b>Channel Type:</b>	Independent

Related products



**IR2183PBF.**

[IR](#)

RFQ



**IR2184**

IC DRIVER HIGH/LOW SIDE 8-DIP  
[Infineon Technologies](#)

RFQ



**IR21834STRPBF.**

[IR](#)

RFQ



**IR2183STR**

IC DRIVER HALFBRIDGE 600V 8-SOIC  
[Infineon Technologies](#)

RFQ



**IR21834STRPBF**

IC DRIVER HALF BRIDGE 14SOIC  
[Infineon Technologies](#)

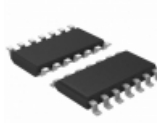
RFQ



**IR2183PBF**

IC DRIVER HALF BRIDGE 8DIP  
[Infineon Technologies](#)

RFQ



**IR21834STR**

IC DRIVER HALFBRIDGE 600V 14SOIC  
[Infineon Technologies](#)

RFQ



**IR2183STRPBF**

IC DRIVER HALF BRIDGE 8SOIC  
[Infineon Technologies](#)

RFQ



**IR2183STRPBF.**

[IR](#)

RFQ



**IR2183SPBF**

IC DRIVER HALF BRIDGE 600V 8SOIC  
[Infineon Technologies](#)

RFQ

Guess You May Looking For



**CRA2512-JZ-R075ELF**

RES SMD 0.075 OHM 5% 3W 2512  
[Bourns Inc.](#)

RFQ



**RNCF2010BTE432K**

RES SMD 432K OHM 0.1% 1/3W 2010  
[Stackpole Electronics Inc.](#)

RFQ



**RVC2512JK51R0**

RES SMD 51 OHM 5% 1W 2512  
[Stackpole Electronics Inc.](#)

RFQ



**RNCF1210BTC2M00**

RES SMD 2M OHM 0.1% 1/4W 1210  
[Stackpole Electronics Inc.](#)

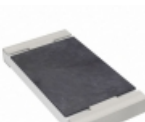
RFQ



**TNPW08055K49BEEA**

RES SMD 5.49K OHM 0.1% 1/8W 0805  
[Vishay Dale](#)

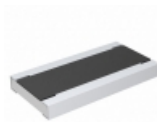
RFQ



**PE2010JKF7W0R005L**

RES SMD 0.005 OHM 5% 1W 2010  
[Yageo](#)

RFQ



**RCWE102023L2FKEA**

RES SMD 0.0232 OHM 2W 2010 WIDE  
[Vishay Dale](#)

RFQ



**RG2012P-5360-W-T5**

RES SMD 536 OHM 0.05% 1/8W 0805  
[Susumu](#)

RFQ



**RNCF1210DKE26K7**

RES SMD 26.7K OHM 0.5% 1/3W 1210  
[Stackpole Electronics Inc.](#)

RFQ



**RNCF2512BKE340K**

RES SMD 340K OHM 0.1% 1/2W 2512  
[Stackpole Electronics Inc.](#)

RFQ