

MAX5911ESA+T



Maxim Integrated

IC HOT-SWAP SWITCH -48V 8-SOIC
Lead free / RoHS Compliant
Integrated Circuits (ICs)

- [1.MAX5911ESA+T.pdf](#)
- [2.MAX5911ESA+T.pdf](#)

Buy Now

Out Stock

0 pcs

Minimum:1

Multiples:100

Manufacturer lead time 10 weeks

Images are for reference only.

See Product Specifications for product details.

If you are interested to buy MAX5911ESA+T,Just Email us.

Sales@zeanoit.com

our sales team will reply you within 24 hours

Shopping Process

1

Confirm the product

2

submit the order

3

payment

4

wait for delivery

5

receive the goods

Specifications

Voltage - Supply:	-65 V ~ -16 V
Type:	Hot Swap Controller
Supplier Device Package:	8-SOIC
Series:	Simple Swapper™
Programmable Features:	UVLO
Packaging:	Tape & Reel (TR)
Package / Case:	8-SOIC (0.154", 3.90mm Width)
Operating Temperature:	-40°C ~ 85°C
Number of Channels:	1
Mounting Type:	Surface Mount
Internal Switch(s):	Yes
Features:	Thermal Limit
Feature Pins:	ENABLE, /FAULT, UVLO
Current - Supply:	1.5mA
Current - Output (Max):	280mA
Applications:	-48V

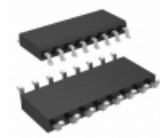
Related products



MAX5911

in stock
[MAXIM](#)

RFQ



MAX5912ESE+T

IC HOT-SWAP SWITCH -48V 16-SOIC
[Maxim Integrated](#)

RFQ



MAX5911EVKIT#

KIT EVAL FOR MAX5911
[Maxim Integrated](#)

RFQ



MAX5910ESA+T

IC HOT-SWAP SWITCH 65V 8-SOIC
[Maxim Integrated](#)

RFQ



MAX5911ESA+

in stock
[MAXIM](#)

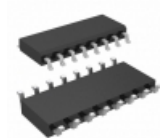
RFQ



MAX5913

in stock
[MAXIM](#)

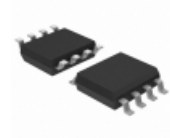
RFQ



MAX5912ESE+

IC HOT-SWAP SWITCH -48V 16-SOIC
[Maxim Integrated](#)

RFQ



MAX5911ESA+

IC HOT-SWAP SWITCH -48V 8-SOIC
[Maxim Integrated](#)

RFQ



MAX5911ESA

[MAXIM](#)

RFQ

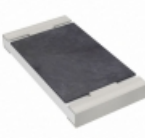


MAX5912ESE

in stock
[MAXIM](#)

RFQ

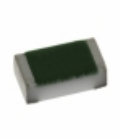
Guess You May Looking For



RT2010BKE07510RL

RES SMD 510 OHM 0.1% 1/2W 2010
[Yageo](#)

RFQ



TNPW0402115RBETD

RES SMD 115 OHM 0.1% 1/16W 0402
[Vishay Dale](#)

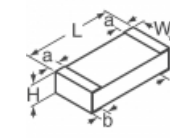
RFQ



RT1206BRC07182RL

RES SMD 182 OHM 0.1% 1/4W 1206
[Yageo](#)

RFQ



RPC2512FT82R5

RES SMD 82.5 OHM 1% 1.5W 2512
[Stackpole Electronics Inc.](#)

RFQ



ERJ-L1DUF95MU

RES SMD 0.095 OHM 1% 1/2W 2010
[Panasonic Electronic Components](#)

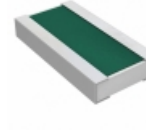
RFQ



CSS2512JT1L50

RES SMD 0.0015 OHM 5% 2W 2512
[Stackpole Electronics Inc.](#)

RFQ



PRG3216P-6800-B-T5

RES SMD 680 OHM 1W 1206 WIDE
[Susumu](#)

RFQ



RG1005P-2610-W-T5

RES SMD 261 OHM 0.05% 1/16W 0402
[Susumu](#)

RFQ



HRG3216P-8062-D-T5

RES SMD 80.6K OHM 0.5% 1W 1206
[Susumu](#)

RFQ



RT0805BRB0745R3L

RES SMD 45.3 OHM 0.1% 1/8W 0805
[Yageo](#)

RFQ