


XC17S05XLV08C



Xilinx

IC 3V PROM PROG 50K 8-SOIC
Contains lead / RoHS non-compliant
Integrated Circuits (ICs)

 [XC17S05XLV08C.pdf](#)

 **Buy Now**

We can supply Xilinx XC17S05XLV08C, use the request quote form to request XC17S05XLV08C price, Xilinx Datasheet PDF and lead time. Zeanoit.com is a professional electronic components distributor. With 3+ Million line items of available electronic components can ship in short lead-time, over 250 thousand part numbers of electronic components in stock for immediately delivery, which may include part number XC17S05XLV08C. The price and lead time for XC17S05XLV08C depending on the quantity required, availability and warehouse location.

Shopping Process

1

Confirm the product

2

submit the order

3

payment

4

wait for delivery

5

receive the goods

Specifications

Voltage - Supply:	3 V ~ 3.6 V
Supplier Device Package:	8-TSOP
Series:	-
Programmable Type:	OTP
Packaging:	Tube
Package / Case:	8-SOIC (0.154", 3.90mm Width)
Operating Temperature:	0°C ~ 70°C
Memory Size:	50kb

Related products



XC17S10
Spartan and Spartan-XL Families Field Programmable Gate Arrays
[XILINX](#)

RFQ



XC17S05XLPD8I
IC PROM PROG I-TEMP 3.3V 8-DIP
[Xilinx Inc.](#)

RFQ



XC17S05XLPD8C
IC PROM PROG C-TEMP 3.3V 8-DIP
[Xilinx Inc.](#)

RFQ



XC17S05XLSO20I
Spartan Family of One-Time Programmable Configuration PROMs
[XILINX](#)

RFQ



XC17S100AGC
[XILINX](#)

RFQ



XC17S05XLSO20C
Spartan Family of One-Time Programmable Configuration PROMs
[XILINX](#)

RFQ



XC17S05XL
Spartan and Spartan-XL Families Field Programmable Gate Arrays
[XILINX](#)

RFQ



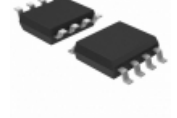
XC17S100APD8C
IC PROM SER 100000 C-TEMP 8-DIP
[Xilinx Inc.](#)

RFQ



XC17S100APD8I
IC PROM SER 100000 I-TEMP 8-DIP
[Xilinx Inc.](#)

RFQ



XC17S05XLV08I
IC 3V PROM PROG 50K 8-SOIC
[Xilinx Inc.](#)

RFQ

Guess You May Looking For



AT1206DRE0735K7L
RES SMD 35.7K OHM 0.5% 1/4W 1206
[Yageo](#)

RFQ



AT1206DRE07523RL
RES SMD 523 OHM 0.5% 1/4W 1206
[Yageo](#)

RFQ



AT1206DRE0715RL
RES SMD 15 OHM 0.5% 1/4W 1206
[Yageo](#)

RFQ



RT0603CRD071K74L
RES SMD 1.74K OHM 1/10W 0603
[Yageo](#)

RFQ



RT0603CRD0726K7L
RES SMD 26.7K OHM 1/10W 0603
[Yageo](#)

RFQ



RT0603CRD075K76L
RES SMD 5.76K OHM 1/10W 0603
[Yageo](#)

RFQ



CRGH2010F549R
RES SMD 549 OHM 1% 1W 2010
[TE Connectivity Passive Product](#)

RFQ



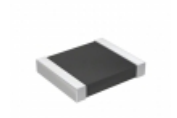
AT1206DRE07910RL
RES SMD 910 OHM 0.5% 1/4W 1206
[Yageo](#)

RFQ



CAR0603-4K7B1
RES SMD 4.7K OHM 0.1% 1/16W 0603
[Riedon](#)

RFQ



RT1210FRD071ML
RES SMD 1M OHM 1% 1/4W 1210
[Yageo](#)

RFQ