


AT17C002A-10JC



Microchip Technology

IC SRL CONFIG EEPROM 2M 20PLCC
Contains lead / RoHS non-compliant
Integrated Circuits (ICs)

 [AT17C002A-10JC.pdf](#)

 [Buy Now](#)

We can supply AT17C002A-10JC, use the request quote form to request AT17C002A-10JC price and lead time. Zeano is a professional electronic components distributor. With 3+ Million line items of available electronic components can ship in short lead-time, over 250 thousand part numbers of electronic components in stock for immediately delivery, which may include part number AT17C002A-10JC. The price and lead time for AT17C002A-10JC depending on the quantity required and warehouse location. Contact us and our sales representative will provide you price. We look forward to work with you.

Shopping Process

1

Confirm the product

2

submit the order

3

payment

4

wait for delivery

5

receive the goods

Specifications

Voltage - Supply:	4.75 V ~ 5.25 V
Supplier Device Package:	20-PLCC (9x9)
Series:	-
Programmable Type:	Serial EEPROM
Packaging:	Tube
Package / Case:	20-LCC (J-Lead)
Operating Temperature:	0°C ~ 70°C
Memory Size:	2Mb

Related products



AT17C002A-10JI

in stock
[ATMEL](#)

RFQ



AT17C002A-10JC

in stock
[ATMEL](#)

RFQ



AT17C002A-10QC

in stock
[ATMEL](#)

RFQ



AT17C002A-10JI

IC SRL CONFIG EEPROM 2M 20PLCC
[Microchip Technology](#)

RFQ



AT17C002A-10QC

IC SRL CONFIG EEPROM 2M 32TQFP
[Microchip Technology](#)

RFQ



AT17C002-10TQI

in stock
[ATMEL](#)

RFQ



AT17C002-10TQC

in stock
[ATMEL](#)

RFQ



AT17C002A-10BJI

IC SRL CONFIG EEPROM 2M 44PLCC
[Microchip Technology](#)

RFQ



AT17C002A-10BJC

IC SRL CONFIG EEPROM 2M 44PLCC
[Microchip Technology](#)

RFQ



AT17C002A

in stock
[ATMEL](#)

RFQ

Guess You May Looking For



AT1206DRE07127RL

RES SMD 127 OHM 0.5% 1/4W 1206
[Yageo](#)

RFQ



RT0603CRD07340RL

RES SMD 340 OHM 0.25% 1/10W 0603
[Yageo](#)

RFQ



RG1608P-2152-B-T5

RES SMD 21.5KOHM 0.1% 1/10W 0603
[Susumu](#)

RFQ



CRGH2010F3K09

RES SMD 3.09K OHM 1% 1W 2010
[TE Connectivity Passive Product](#)

RFQ



CAR0603-1KB1

RES SMD 1K OHM 0.1% 1/16W 0603
[Riedon](#)

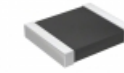
RFQ



RG1608P-5491-B-T5

RES SMD 5.49KOHM 0.1% 1/10W 0603
[Susumu](#)

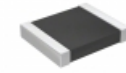
RFQ



RT1210FRD07287KL

RES SMD 287K OHM 1% 1/4W 1210
[Yageo](#)

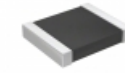
RFQ



RT1210FRD0738R3L

RES SMD 38.3 OHM 1% 1/4W 1210
[Yageo](#)

RFQ



RT1210FRD0739KL

RES SMD 39K OHM 1% 1/4W 1210
[Yageo](#)

RFQ



RT1210FRD07174RL

RES SMD 174 OHM 1% 1/4W 1210
[Yageo](#)

RFQ