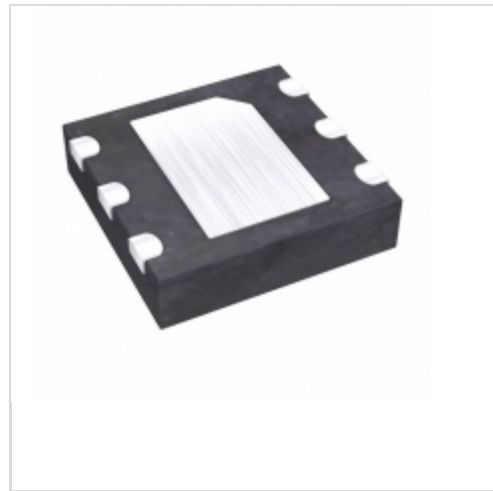


**MAX4797ETT+T**



**Maxim Integrated**

IC SWITCH 1X1 6TDFN

Lead free / RoHS Compliant

Integrated Circuits (ICs)

[1.MAX4797ETT+T.pdf](#)

[2.MAX4797ETT+T.pdf](#)

**Buy Now**

part#MAX4797ETT+T is available, see description of MAX4797ETT+T as below . use the request quote form to request MAX4797ETT+T price and lead time. Buy Electronic Components at zeanoit.com .we are an independent distributor of electronic components with extensive inventory in stock. The price and lead time for MAX4797ETT+T depending on the quantity required, availability and warehouse location.Contact us today and our sales team will send you quotation soon. Email: sales@zeanoit.com

Shopping Process

**1**

Confirm the product

**2**

submit the order

**3**

payment

**4**

wait for delivery

**5**

receive the goods

Specifications

<b>Voltage - Input:</b>	2 V ~ 4.5 V
<b>Supplier Device Package:</b>	6-TDFN-EP (3x3)
<b>Series:</b>	-
<b>Sensing Method:</b>	-
<b>Packaging:</b>	Tape & Reel (TR)
<b>Package / Case:</b>	6-WDFN Exposed Pad
<b>Operating Temperature:</b>	-40°C ~ 85°C
<b>Mounting Type:</b>	Surface Mount
<b>Function:</b>	Current Limiting
<b>Current - Output:</b>	500mA
<b>Accuracy:</b>	-

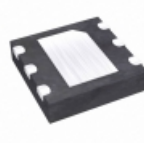
Related products



**MAX4797ETT**

in stock  
[MAXIM](#)

RFQ



**MAX4798ETT+T**

IC SWITCH 1X1 6TDFN  
[Maxim Integrated](#)

RFQ



**MAX4795EUK-T**

in stock  
[MAXIM](#)

RFQ



**MAX4796ETT**

in stock  
[MAXIM](#)

RFQ



**MAX4796EUK+T**

IC SWITCH 1X1 SOT23-5  
[Maxim Integrated](#)

RFQ



**MAX4798**

in stock  
[MAXIM](#)

RFQ



**MAX4798EUK**

in stock  
[MAXIM](#)

RFQ



**MAX4798ETT**

in stock  
[MAXIM](#)

RFQ



**MAX4797EUK-T**

in stock  
[MAXIM](#)

RFQ

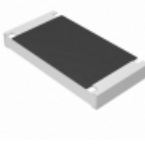


**MAX4796EUK-T**

in stock  
[MAXIM](#)

RFQ

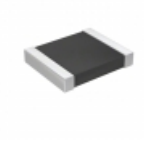
Guess You May Looking For



**ERJ-S1DF322U**

RES SMD 73.2K OHM 1% 3/4W 2010  
[Panasonic Electronic Components](#)

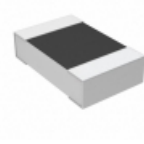
RFQ



**RT1210BRD0712R4L**

RES SMD 12.4 OHM 0.1% 1/4W 1210  
[Yageo](#)

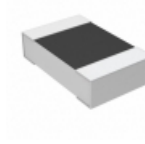
RFQ



**CPF0805B9R09E1**

RES SMD 9.09 OHM 0.1% 1/10W 0805  
[TE Connectivity Passive Product](#)

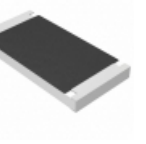
RFQ



**CPF0805B44R2E1**

RES SMD 44.2 OHM 0.1% 1/10W 0805  
[TE Connectivity Passive Product](#)

RFQ



**ERJ-S1TF9532U**

RES SMD 95.3K OHM 1% 1W 2512  
[Panasonic Electronic Components](#)

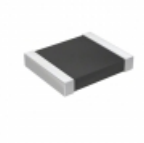
RFQ



**AT1206CRD07210KL**

RES SMD 210K OHM 0.25% 1/4W 1206  
[Yageo](#)

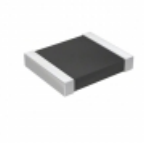
RFQ



**RT1210BRD0751R1L**

RES SMD 51.1 OHM 0.1% 1/4W 1210  
[Yageo](#)

RFQ



**RT1210BRD07715RL**

RES SMD 715 OHM 0.1% 1/4W 1210  
[Yageo](#)

RFQ



**AT1206CRD073KL**

RES SMD 3K OHM 0.25% 1/4W 1206  
[Yageo](#)

RFQ



**RT1206CRC073K9L**

RES SMD 3.9K OHM 0.25% 1/4W 1206  
[Yageo](#)

RFQ