

UC2861QG3


N/A
 IC REG CTRLR PWM VM 20-PLCC
 Lead free / RoHS Compliant
 Integrated Circuits (ICs)

Buy Now

We can supply UC2861QG3, use the request quote form to request UC2861QG3 price, Datasheet PDF and lead time. Zeanoit.com is a professional electronic components distributor. With 3+ Million line items of available electronic components can ship in short lead-time, over 250 thousand part numbers of electronic components in stock for immediately delivery, which may include part number UC2861QG3. The price and lead time for UC2861QG3 depending on the quantity required, availability and warehouse location.

Out Stock
0 pcs

Minimum:1

Multiples:1

Manufacturer lead time 10 weeks

Shopping Process

1
Confirm the product
2
submit the order
3
payment
4
wait for delivery
5
receive the goods

Specifications

Voltage - Supply (Vcc/Vdd):	10.5 V ~ 22 V
Voltage - Start Up:	16.5V
Voltage - Breakdown:	-
Topology:	Full-Bridge, Half-Bridge, Push-Pull
Supplier Device Package:	20-PLCC (9x9)
Series:	-
Power (Watts):	-
Packaging:	Tube
Package / Case:	20-LCC (J-Lead)
Output Isolation:	Non-Isolated
Operating Temperature:	-25°C ~ 85°C (TA)
Internal Switch(s):	Yes
Frequency - Switching:	10kHz ~ 1MHz
Fault Protection:	-
Duty Cycle:	-
Control Features:	Soft Start

Related products


UC2864N
[UC](#)
[RFQ](#)

UC2861DWG4

IC REG CTRLR PWM VM 16-SOIC

[N/A](#)
[RFQ](#)

UC2863N

IC REG CTRLR MULT TOPOLOGY 16DIP

[N/A](#)
[RFQ](#)

UC2861NG4

IC REG CTRLR PWM VM 16DIP

[N/A](#)
[RFQ](#)

UC2864DW

IC REG CTRLR MULT TOP 16SOIC

[N/A](#)
[RFQ](#)

UC2861Q

IC REG CTRLR PWM VM 20-PLCC

[N/A](#)
[RFQ](#)

UC2863DWG4

IC REG CTRLR MULT TOP 16SOIC

[N/A](#)
[RFQ](#)

UC2861DW

IC REG CTRLR PWM VM 16-SOIC

[N/A](#)
[RFQ](#)

UC2861N

IC REG CTRLR PWM VM 16DIP

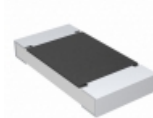
[N/A](#)
[RFQ](#)

UC2863DW

IC REG CTRLR MULT TOP 16SOIC

[N/A](#)
[RFQ](#)

Guess You May Looking For

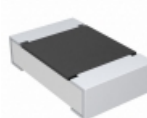

CRCW20103M00FKTF

RES SMD 3M OHM 1% 3/4W 2010

[Vishay Dale](#)
[RFQ](#)

ERA-2HEC3161X

RES SMD 3.16K OHM 1/16W 0402

[Panasonic Electronic Components](#)
[RFQ](#)

CRCW08051R80FMTA

RES SMD 1.8 OHM 1% 1/8W 0805

[Vishay Dale](#)
[RFQ](#)

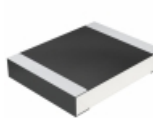
RT0805BRE0769R8L

RES SMD 69.8 OHM 0.1% 1/8W 0805

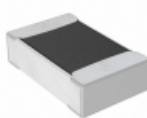
[Yageo](#)
[RFQ](#)

RT0805BRE0743R2L

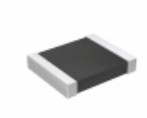
RES SMD 43.2 OHM 0.1% 1/8W 0805

[Yageo](#)
[RFQ](#)

CRCW1210221RFKEAHP

RES SMD 221 OHM 1% 3/4W 1210

[Vishay Dale](#)
[RFQ](#)

RNCS0805BTE1K47

RES SMD 1.47KOHM 0.1% 1/10W 0805

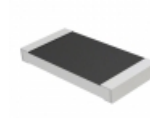
[Stackpole Electronics Inc.](#)
[RFQ](#)

RT1210DRD07402RL

RES SMD 402 OHM 0.5% 1/4W 1210

[Yageo](#)
[RFQ](#)

SR2512MK-071R5L

RES SMD 1.5 OHM 20% 1W 2512

[Yageo](#)
[RFQ](#)

RMCP2010FT75R0

RES SMD 75 OHM 1% 1W 2010

[Stackpole Electronics Inc.](#)
[RFQ](#)