

**MBR230LSFT1G**



[AMI Semiconductor / ON Semiconductor](#)

DIODE SCHOTTKY 30V 2A SOD123L

Lead free / RoHS Compliant

Discrete Semiconductor Products

[MBR230LSFT1G.pdf](#)

**Buy Now**

We can supply AMI Semiconductor / ON Semiconductor MBR230LSFT1G, use the request quote form to request MBR230LSFT1G price, AMI Semiconductor / ON Semiconductor Datasheet PDF and lead time. Zeanoit.com is a professional electronic components distributor. With 3+ Million line items of available electronic components can ship in short lead-time, over 250 thousand part numbers of electronic components in stock for immediately delivery, which may include part number MBR230LSFT1G. The price and lead time for MBR230LSFT1G depending on the quantity required, availability and warehouse location.

**Out Stock**

**0 pcs**

Minimum:1

Multiples:100

Manufacturer lead time 10 weeks

**PRICE**

3000 pcs	\$0.087
6000 pcs	\$0.082
15000 pcs	\$0.075
30000 pcs	\$0.07
65535 pcs	\$0.063

Shopping Process

**1**

Confirm the product

**2**

submit the order

**3**

payment

**4**

wait for delivery

**5**

receive the goods

Specifications

<b>Voltage - Forward (Vf) (Max) @ If:</b>	430mV @ 2A
<b>Voltage - DC Reverse (Vr) (Max):</b>	30V
<b>Supplier Device Package:</b>	SOD-123L
<b>Speed:</b>	Fast Recovery = 200mA (Io)
<b>Series:</b>	-
<b>Packaging:</b>	Tape & Reel (TR)
<b>Package / Case:</b>	SOD-123F
<b>Operating Temperature - Junction:</b>	-55°C ~ 125°C
<b>Mounting Type:</b>	Surface Mount
<b>Diode Type:</b>	Schottky
<b>Current - Reverse Leakage @ Vr:</b>	1mA @ 30V
<b>Current - Average Rectified (Io):</b>	2A
<b>Capacitance @ Vr, F:</b>	-

Related products



**MBR230HWTR**

DIODE SCHOTTKY 30V 2A SOD123

[SMC Diode Solutions](#)

RFQ



**MBR230S1F-7**

DIODE SCHOTTKY 30V 2A SOD123F

[Diodes Incorporated](#)

RFQ

**molex**

**MBR230LSFT1**

[ON](#)

RFQ



**MBR230LSTR**

DIODE SCHOTTKY 30V 2A SOD123

[SMC Diode Solutions](#)

RFQ



**MBR230LSF**

RFQ



**MBR25100CT**

[TSC](#)

RFQ

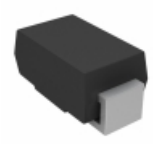


**MBR25060V**

in stock

[MOTOROLA](#)

RFQ



**MBR2150VRTR-G1**

DIODE SCHOTTKY DO-214

[Diodes Incorporated](#)

RFQ



**MBR2150VRTR-E1**

DIODE SCHOTTKY 150V 2A DO214AC

[Diodes Incorporated](#)

RFQ



**MBR240100V**

in stock

[MOTOROLA](#)

RFQ

Guess You May Looking For



**SIT1602BI-13-XXN-35.840000D**

-40 TO 85C, 2520, 50PPM, 2.25V-3

[SITIME](#)

RFQ



**SIT1602BC-33-25N-8.192000Y**

-20 TO 70C, 5032, 50PPM, 2.5V, 8

[SITIME](#)

RFQ



**SIT1602BI-13-18S-31.250000D**

-40 TO 85C, 2520, 50PPM, 1.8V, 3

[SITIME](#)

RFQ



**SIT1602BI-33-18E-66.600000T**

-40 TO 85C, 5032, 50PPM, 1.8V, 6

[SITIME](#)

RFQ



**SIT1602BI-83-28E-40.500000Y**

-40 TO 85C, 7050, 50PPM, 2.8V, 4

[SITIME](#)

RFQ



**SIT1602BC-81-33N-28.636300T**

-20 TO 70C, 7050, 20PPM, 3.3V, 2

[SITIME](#)

RFQ



**SIT1602BI-12-25S-72.000000D**

-40 TO 85C, 2520, 25PPM, 2.5V, 7

[SITIME](#)

RFQ



**SIT1602BC-82-18S-77.760000Y**

-20 TO 70C, 7050, 25PPM, 1.8V, 7

[SITIME](#)

RFQ



**SIT1602BI-31-33S-74.176000Y**

-40 TO 85C, 5032, 20PPM, 3.3V, 7

[SITIME](#)

RFQ



**SIT1602BC-13-18S-18.432000G**

-20 TO 70C, 2520, 50PPM, 1.8V, 1

[SITIME](#)

RFQ