

DRV8844PWPR


N/A
 IC MOTOR DRIVER PAR 28HTSSOP
 Lead free / RoHS Compliant
 Integrated Circuits (ICs)

Buy Now

parts#DRV8844PWPR is available, see description of DRV8844PWPR as below .
 use the request quote form to request DRV8844PWPR price and lead time.
 Buy Electronic Components at zeanoit.com .we are an independent distributor of electronic components with extensive inventory in stock.
 The price and lead time for DRV8844PWPR depend on the quantity required, availability and warehouse location.Contact us today and our sales team will send you quotation soon.
 Email: sales@zeanoit.com

Out Stock
0 pcs

Minimum:1

Multiples:1

Manufacturer lead time 10 weeks

Shopping Process


Confirm the product

submit the order

payment

wait for delivery

receive the goods

Specifications

Voltage - Supply:	8 V ~ 60 V
Voltage - Load:	8 V ~ 60 V
Technology:	Power MOSFET
Supplier Device Package:	28-HTSSOP
Step Resolution:	-
Series:	-
Packaging:	Tape & Reel (TR)
Package / Case:	28-TSSOP (0.173", 4.40mm Width) Exposed Pad
Output Configuration:	Half Bridge (4)
Operating Temperature:	-40°C ~ 150°C (TJ)
Mounting Type:	Surface Mount
Motor Type - Stepper:	Bipolar
Motor Type - AC, DC:	Brushed DC
Interface:	Parallel
Function:	Driver - Fully Integrated, Control and Power Stage
Current - Output:	1.75A
Applications:	General Purpose

Related products



DRV8848EVM
 EVAL BOARD FOR DRV8848
 N/A

RFQ



DRV8844PWP
 IC MOTOR DRIVER PAR 28HTSSOP
 N/A

RFQ



DRV8846RGET
 IC MOTOR DRIVER PAR 24VQFN
 N/A

RFQ



DRV8846RGER
 IC MOTOR DRIVER PAR 24VQFN
 N/A

RFQ



DRV8843EVM
 EVAL MODULE FOR DRV8843
 N/A

RFQ



DRV8843PWP
 IC MOTOR DRIVER PAR 28HTSSOP
 N/A

RFQ



DRV8843PWPR
 IC MOTOR DRIVER PAR 28HTSSOP
 N/A

RFQ



DRV8844EVM
 EVAL MODUOLE FOR DRV8844
 N/A

RFQ



DRV8846EVM
 EVAL BOARD FOR DRV8846
 N/A

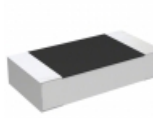
RFQ



DRV8848LPWPR
 TI

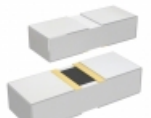
RFQ

Guess You May Looking For



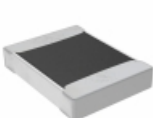
RP73D2B523RBTG
 RES SMD 523 OHM 0.1% 1/4W 1206
 TE Connectivity Passive Product

RFQ



PHP00603E19R1BST1
 RES SMD 19.1 OHM 0.1% 3/8W 0603
 Vishay Thin Film

RFQ



TNPW12106K65BEEN
 RES SMD 6.65K OHM 0.1% 1/3W 1210
 Vishay Dale

RFQ



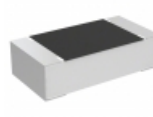
RG2012V-3480-W-T5
 RES SMD 348 OHM 0.05% 1/8W 0805
 Susumu

RFQ



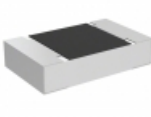
RG2012V-4751-B-T5
 RES SMD 4.75K OHM 0.1% 1/8W 0805
 Susumu

RFQ



TNPU060330K0BZEN00
 RES SMD 30K OHM 0.1% 1/10W 0603
 Vishay Dale

RFQ



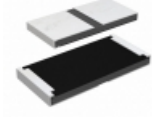
TNPU0805604RBZEN00
 RES SMD 604 OHM 0.1% 1/8W 0805
 Vishay Dale

RFQ



RG1005V-2051-W-T5
 RES SMD 2.05K OHM 1/16W 0402
 Susumu

RFQ



RCP2512W820RGEA
 RES SMD 820 OHM 2% 22W 2512
 Vishay Dale

RFQ



RG1608V-1070-P-T1
 RES SMD 107 OHM 0.02% 1/10W 0603
 Susumu

RFQ

