

**TLE72422GXUMA1**



**International Rectifier (Infineon Technologies)**

IC CURRENT SOURCE DSO28  
Lead free / RoHS Compliant  
Integrated Circuits (ICs)

[TLE72422GXUMA1.pdf](#)

**Buy Now**

We can supply TLE72422GXUMA1, use the request quote form to request TLE72422GXUMA1 price and lead time. Zeano is a professional electronic components distributor. With 3+ Million line items of available electronic components can ship in short lead-time, over 250 thousand part numbers of electronic components in stock for immediately delivery, which may include part number TLE72422GXUMA1. The price and lead time for TLE72422GXUMA1 depending on the quantity required and warehouse location. Contact us and our sales representative will provide you price. We look forward to work with you.

**Out Stock**

**0 pcs**

Minimum: 1

Multiples: 100

Manufacturer lead time 10 weeks

Shopping Process

**1**

**Confirm the product**

**2**

**submit the order**

**3**

**payment**

**4**

**wait for delivery**

**5**

**receive the goods**

Specifications

<b>Voltage - Input:</b>	5.5 V ~ 42 V
<b>Supplier Device Package:</b>	PG-DSO-28
<b>Series:</b>	-
<b>Sensing Method:</b>	Low-Side
<b>Packaging:</b>	Tape & Reel (TR)
<b>Package / Case:</b>	28-SOIC (0.295", 7.50mm Width)
<b>Operating Temperature:</b>	-40°C ~ 150°C
<b>Mounting Type:</b>	Surface Mount
<b>Function:</b>	Current Source
<b>Current - Output:</b>	30mA
<b>Accuracy:</b>	-

Related products



**TLE7241E**  
IC SOLENOID DVR 2CH CC DSO-20  
[Infineon Technologies](#)

RFQ



**TLE7243SL**  
[INFINEON](#)

RFQ



**TLE7244SL**  
IC DRIVER SPI 8CH LS 24SSOP  
[Infineon Technologies](#)

RFQ



**TLE7242-G**  
[INF](#)

RFQ



**TLE7242G**  
[INFINEON](#)

RFQ



**TLE7242-2G**  
[INFINEON](#)

RFQ



**TLE72422GXUMA2**  
IC CURRENT SOURCE DSO28  
[Infineon Technologies](#)

RFQ



**TLE7240SL\_A**  
[INFINEON](#)

RFQ



**TLE7243SLXUMA2**  
IC DRIVER SPI 8CH LS 24SSOP  
[Infineon Technologies](#)

RFQ



**TLE7241EXUMA2**  
IC SOLENOID DVR 2CH CC DSO-20  
[Infineon Technologies](#)

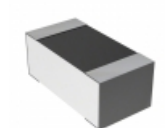
RFQ

Guess You May Looking For



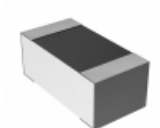
**RT0805CRB07698KL**  
RES SMD 698K OHM 0.25% 1/8W 0805  
[Yageo](#)

RFQ



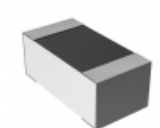
**CPF0603B105RE1**  
RES SMD 105 OHM 0.1% 1/16W 0603  
[TE Connectivity Passive Product](#)

RFQ



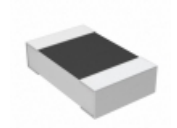
**CPF0603B7K32E1**  
RES SMD 7.32KOHM 0.1% 1/16W 0603  
[TE Connectivity Passive Product](#)

RFQ



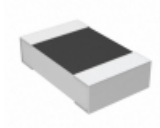
**CPF0603B80K6E1**  
RES SMD 80.6KOHM 0.1% 1/16W 0603  
[TE Connectivity Passive Product](#)

RFQ



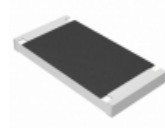
**CPF0805B2K74E1**  
RES SMD 2.74KOHM 0.1% 1/10W 0805  
[TE Connectivity Passive Product](#)

RFQ



**CPF0805B280KE1**  
RES SMD 280K OHM 0.1% 1/10W 0805  
[TE Connectivity Passive Product](#)

RFQ



**ERJ-S1TF71R5U**  
RES SMD 71.5 OHM 1% 1W 2512  
[Panasonic Electronic Components](#)

RFQ



**AT1206CRD0726K1L**  
RES SMD 26.1KOHM 0.25% 1/4W 1206  
[Yageo](#)

RFQ



**RG3216P-7151-B-T1**  
RES SMD 7.15K OHM 0.1% 1/4W 1206  
[Susumu](#)

RFQ



**RG3216P-5623-B-T1**  
RES SMD 562K OHM 0.1% 1/4W 1206  
[Susumu](#)

RFQ