

## AT28C64E-12JU



[Microchip Technology](#)

IC EEPROM 64KBIT 120NS 32PLCC

Lead free / RoHS Compliant

Integrated Circuits (ICs)

[Buy Now](#)

We can supply AT28C64E-12JU, use the request quote form to request AT28C64E-12JU price and lead time. Zeano is a professional electronic components distributor. With 3+ Million line items of available electronic components can ship in short lead-time, over 250 thousand part numbers of electronic components in stock for immediately delivery, which may include part number AT28C64E-12JU. The price and lead time for AT28C64E-12JU depending on the quantity required and warehouse location. Contact us and our sales representative will provide you price. We look forward to work with you.

### Shopping Process

1

Confirm the product

2

submit the order

3

payment

4

wait for delivery

5

receive the goods

### Specifications

<b>Voltage - Supply:</b>	4.5 V ~ 5.5 V
<b>Supplier Device Package:</b>	32-PLCC
<b>Speed:</b>	120ns
<b>Series:</b>	-
<b>Packaging:</b>	Tube
<b>Package / Case:</b>	32-LCC (J-Lead)
<b>Operating Temperature:</b>	-40°C ~ 85°C (TC)
<b>Memory Type:</b>	Non-Volatile
<b>Memory Size:</b>	64Kb (8K x 8)
<b>Memory Format:</b>	EEPROM
<b>Interface:</b>	Parallel

### Related products



**AT28C64E-12JC**  
IC EEPROM 64KBIT 120NS 32PLCC  
[Microchip Technology](#)

RFQ



**AT28C64E-12PC**  
IC EEPROM 64KBIT 120NS 28DIP  
[Microchip Technology](#)

RFQ



**AT28C64E-12SI**  
IC EEPROM 64KBIT 120NS 28SOIC  
[Microchip Technology](#)

RFQ



**AT28C64E-12PI**  
IC EEPROM 64KBIT 120NS 28DIP  
[Microchip Technology](#)

RFQ



**AT28C64E-12SC**  
IC EEPROM 64KBIT 120NS 28SOIC  
[Microchip Technology](#)

RFQ



**AT28C64E-12SU**  
IC EEPROM 64KBIT 120NS 28SOIC  
[Microchip Technology](#)

RFQ



**AT28C64B-W**  
in stock  
[ATMEL](#)

RFQ



**AT28C64E**  
in stock  
[ATMEL](#)

RFQ



**AT28C64E-12JI**  
IC EEPROM 64KBIT 120NS 32PLCC  
[Microchip Technology](#)

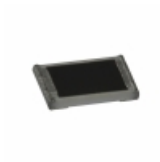
RFQ



**AT28C64B\_06**  
64K (8K x 8) Parallel EEPROM with Page Write and Software Data Protection  
[ATMEL](#)

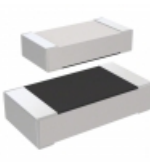
RFQ

### Guess You May Looking For



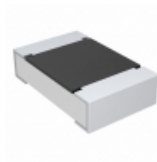
**ERJ-2RKf6191X**  
RES SMD 6.19K OHM 1% 1/10W 0402  
[Panasonic Electronic Components](#)

RFQ



**RC3216J105CS**  
RES SMD 1M OHM 5% 1/4W 1206  
[Samsung Electro-Mechanics America, Inc.](#)

RFQ



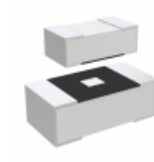
**CRCW08051M80JNEA**  
RES SMD 1.8M OHM 5% 1/8W 0805  
[Vishay Dale](#)

RFQ



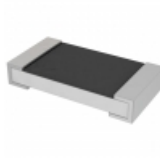
**ESR10EZPJ2R4**  
RES SMD 2.4 OHM 5% 0.4W 0805  
[Rohm Semiconductor](#)

RFQ



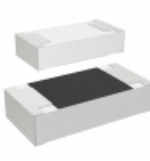
**ESR03EZPJ104**  
RES SMD 100K OHM 5% 1/4W 0603  
[Rohm Semiconductor](#)

RFQ



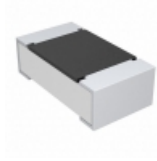
**RL1206FR-7W0R82L**  
RES SMD 0.82 OHM 1% 1/2W 1206  
[Yageo](#)

RFQ



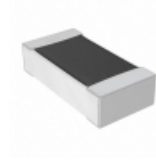
**CR1206-JW-391GLF**  
RES SMD 390 OHM 5% 1/4W 1206  
[Bourns Inc.](#)

RFQ



**CRCW06039M09FKTA**  
RES SMD 9.09M OHM 1% 1/10W 0603  
[Vishay Dale](#)

RFQ



**RNCF0603DTE37K4**  
RES SMD 37.4KOHM 0.5% 1/10W 0603  
[Stackpole Electronics Inc.](#)

RFQ



**RT0603CRE0739R2L**  
RES SMD 39.20HM 0.25% 1/10W 0603  
[Yageo](#)

RFQ