

## UCC3819APWG4



N/A  
 IC PFC CTRL AVERAGE CURR 16TSSOP  
 Lead free / RoHS Compliant  
 Integrated Circuits (ICs)

**Buy Now**

Images are for reference only.

See Product Specifications for product details.

If you are interested to buy UCC3819APWG4,Just Email us.

Sales@zeanoit.com

our sales team will reply you within 24 hours

### Shopping Process



**1**  
Confirm the product



**2**  
submit the order



**3**  
payment



**4**  
wait for delivery



**5**  
receive the goods

### Specifications

<b>Voltage - Supply:</b>	10.8 V ~ 17 V
<b>Supplier Device Package:</b>	16-TSSOP
<b>Series:</b>	-
<b>Packaging:</b>	Tube
<b>Package / Case:</b>	16-TSSOP (0.173", 4.40mm Width)
<b>Operating Temperature:</b>	0°C ~ 70°C
<b>Mounting Type:</b>	Surface Mount
<b>Mode:</b>	Average Current
<b>Frequency - Switching:</b>	250kHz
<b>Current - Startup:</b>	150µA

### Related products



**UCC3819AN**  
 IC PFC CTRLR AVERAGE CURR 16DIP  
[N/A](#)

RFQ



**UCC3819APWRG4**  
 IC PFC CTRL AVERAGE CURR 16TSSOP  
[N/A](#)

RFQ



**UCC3819ADR**  
 IC PFC CTRLR AVERAGE CURR 16SOIC  
[N/A](#)

RFQ



**UCC3819D**  
 IC PFC CTRLR AVERAGE CURR 16SOIC  
[N/A](#)

RFQ



**UCC3819APW**  
 IC PFC CTRL AVERAGE CURR 16TSSOP  
[N/A](#)

RFQ



**UCC3819ADRG4**  
 IC PFC CTRLR AVERAGE CURR 16SOIC  
[N/A](#)

RFQ



**UCC3819APWR**  
 IC PFC CTRL AVERAGE CURR 16TSSOP  
[N/A](#)

RFQ



**UCC3819ANG4**  
 IC PFC CTRLR AVERAGE CURR 16DIP  
[N/A](#)

RFQ



**UCC3819N**  
 IC PFC CTRLR AVERAGE CURR 16DIP  
[N/A](#)

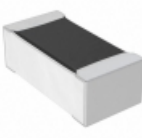
RFQ



**UCC3819DG4**  
 IC PFC CTRLR AVERAGE CURR 16SOIC  
[N/A](#)

RFQ

### Guess You May Looking For



**RN73C1E634RBTG**  
 RES SMD 634 OHM 0.1% 1/16W 0402  
[TE Connectivity Passive Product](#)

RFQ



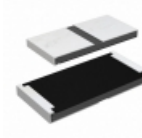
**RG3216V-8060-B-T5**  
 RES SMD 806 OHM 0.1% 1/4W 1206  
[Susumu](#)

RFQ



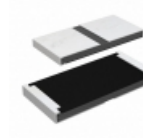
**RCP0603B15R0JS2**  
 RES SMD 15 OHM 5% 3.9W 0603  
[Vishay Dale](#)

RFQ



**RCP2512W24R0JS3**  
 RES SMD 24 OHM 5% 22W 2512  
[Vishay Dale](#)

RFQ



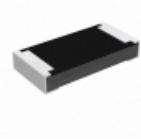
**RCP2512W51R0GEB**  
 RES SMD 51 OHM 2% 22W 2512  
[Vishay Dale](#)

RFQ



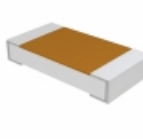
**PFC10-5R6F1**  
 RES SMD 5.6 OHM 1% 25W PFC10  
[Riedon](#)

RFQ



**RCP1206B180RJS2**  
 RES SMD 180 OHM 5% 11W 1206  
[Vishay Dale](#)

RFQ



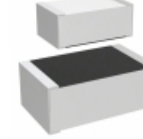
**TNPU1206221RAZEN00**  
 RES SMD 221 OHM 0.05% 1/4W 1206  
[Vishay Dale](#)

RFQ



**PWR6327NR200JE**  
 RES SMD 0.2 OHM 5% 3W 6327  
[Bourns Inc.](#)

RFQ



**M55342E06B133ART5**  
 RES SMD 133 OHM 0.1% 0.15W 0705  
[Vishay Dale](#)

RFQ