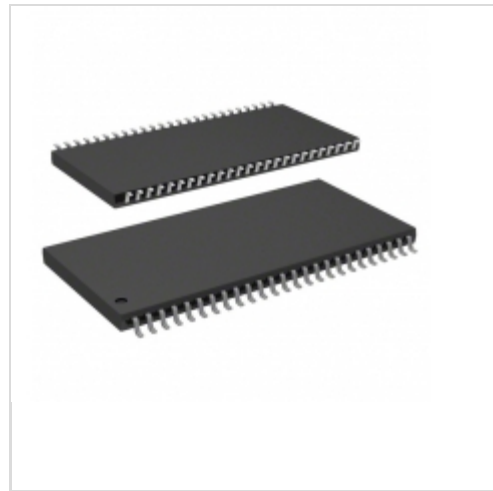


## IS42S16100H-7TLI



### ISSI (Integrated Silicon Solution, Inc.)

IC SDRAM 16MBIT 143MHZ 50TSOP  
Lead free / RoHS Compliant  
Integrated Circuits (ICs)

[IS42S16100H-7TLI.pdf](#)

[Buy Now](#)

**In Stock**  
**873 pcs**  
Minimum:1  
Multiples:100  
Manufacturer lead time 10 weeks

We can supply ISSI (Integrated Silicon Solution, Inc.) IS42S16100H-7TLI, use the request quote form to request IS42S16100H-7TLI price, ISSI (Integrated Silicon Solution, Inc.) Datasheet PDF and lead time. Zeano.com is a professional electronic components distributor. With 3+ Million line items of available electronic components can ship in short lead-time, over 250 thousand part numbers of electronic components in stock for immediately delivery, which may include part number IS42S16100H-7TLI. The price and lead time for IS42S16100H-7TLI depending on the quantity required, availability and warehouse location.

### Shopping Process

**1**

Confirm the product

**2**

submit the order

**3**

payment

**4**

wait for delivery

**5**

receive the goods

### Specifications

<b>Voltage - Supply:</b>	3 V ~ 3.6 V
<b>Supplier Device Package:</b>	50-TSOP II
<b>Speed:</b>	143MHz
<b>Series:</b>	-
<b>Packaging:</b>	Tray
<b>Package / Case:</b>	50-TSOP (0.400", 10.16mm Width)
<b>Operating Temperature:</b>	-40°C ~ 85°C (TA)
<b>Memory Type:</b>	Volatile
<b>Memory Size:</b>	16Mb (1M x 16)
<b>Memory Format:</b>	DRAM
<b>Interface:</b>	Parallel

### Related products



**IS42S16100H-7TLI-TR**  
IC SDRAM 16MBIT 143MHZ 50TSOP  
[ISSI, Integrated Silicon Solution Inc](#)

RFQ



**IS42S16100H-7BLI-TR**  
IC SDRAM 16MBIT 143MHZ 60BGA  
[ISSI, Integrated Silicon Solution Inc](#)

RFQ



**IS42S16128**  
in stock  
[ISSI](#)

RFQ



**IS42S16100\_08**  
in stock  
[ISSI](#)

RFQ



**IS42S16128-12T**  
in stock  
[ISSI](#)

RFQ



**IS42S16100H-7TL-TR**  
IC SDRAM 16MBIT 143MHZ 50TSOP  
[ISSI, Integrated Silicon Solution Inc](#)

RFQ



**IS42S16100H-7TL**  
IC SDRAM 16MBIT 143MHZ 50TSOP  
[ISSI, Integrated Silicon Solution Inc](#)

RFQ



**IS42S16100H-7BLI**  
IC SDRAM 16MBIT 143MHZ 60BGA  
[ISSI, Integrated Silicon Solution Inc](#)

RFQ



**IS42S16100H-7BL-TR**  
IC SDRAM 16MBIT 143MHZ 60BGA  
[ISSI, Integrated Silicon Solution Inc](#)

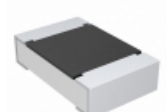
RFQ



**IS42S16128-10T**  
in stock  
[ISSI](#)

RFQ

### Guess You May Looking For



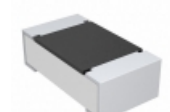
**CRCW0805560KJNEA**  
RES SMD 560K OHM 5% 1/8W 0805  
[Vishay Dale](#)

RFQ



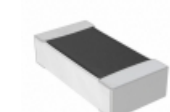
**RL0805FR-7W0R016L**  
RES SMD 0.016 OHM 1% 1/4W 0805  
[Yageo](#)

RFQ



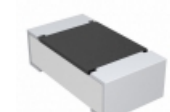
**CRCW0603120KFKTC**  
RES SMD 120K OHM 1% 1/10W 0603  
[Vishay Dale](#)

RFQ



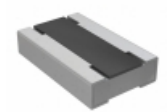
**RNCF0603DTC28R0**  
RES SMD 28 OHM 0.5% 1/10W 0603  
[Stackpole Electronics Inc.](#)

RFQ



**CRCW06032K32FKEAHP**  
RES SMD 2.32K OHM 1% 1/4W 0603  
[Vishay Dale](#)

RFQ



**RCL0406536KFKEA**  
RES SMD 536K OHM 1/4W 0604 WIDE  
[Vishay Dale](#)

RFQ



**ESR18EZPF13R7**  
RES SMD 13.7 OHM 1% 1/3W 1206  
[Rohm Semiconductor](#)

RFQ



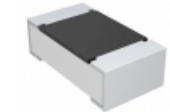
**RNCF0201FTC5K10**  
RES SMD 5.1K OHM 1% 1/32W 0201  
[Stackpole Electronics Inc.](#)

RFQ



**RT0603CRE071R37L**  
RES SMD 1.37OHM 0.25% 1/10W 0603  
[Yageo](#)

RFQ



**CRCW060333K2DKEAP**  
RES SMD 33.2KOHM 0.5% 1/10W 0603  
[Vishay Dale](#)

RFQ