

**UC3854DWTR-F**


N/A  
 IC PFC CTRLR AVERAGE CURR 16SOIC  
 Lead free / RoHS Compliant  
 Integrated Circuits (ICs)

**Buy Now**

**Out Stock**
**0 pcs**

Minimum:1

Multiples:1

Manufacturer lead time 10 weeks

parts#UC3854DWTR-F is available, see description of UC3854DWTR-F as below .  
 use the request quote form to request UC3854DWTR-F price and lead time.  
 Buy Electronic Components at zeanoit.com .we are an independent distributor of  
 electronic components with extensive inventory in stock.  
 The price and lead time for UC3854DWTR-F depend on the quantity required,  
 availability and warehouse location.Contact us today and our sales team will send you  
 quotation soon.  
 Email: sales@zeanoit.com

## Shopping Process

**1**
**Confirm the product**
**2**
**submit the order**
**3**
**payment**
**4**
**wait for delivery**
**5**
**receive the goods**

## Specifications

<b>Voltage - Supply:</b>	14.5 V ~ 30 V
<b>Supplier Device Package:</b>	16-SOIC
<b>Series:</b>	-
<b>Packaging:</b>	Tape & Reel (TR)
<b>Package / Case:</b>	16-SOIC (0.295", 7.50mm Width)
<b>Operating Temperature:</b>	0°C ~ 70°C
<b>Mounting Type:</b>	Surface Mount
<b>Mode:</b>	Average Current
<b>Frequency - Switching:</b>	200kHz
<b>Current - Startup:</b>	1.5mA

## Related products



**UC3854NG4**  
 IC PFC CTRLR AVERAGE CURR 16DIP  
 N/A

RFQ



**UC3854DWR**  
 in stock  
 N/A

RFQ



**UC3854DW-F**  
 TI

RFQ



**UC3854DWG4**  
 IC ENH HIGH P-F PREREG 16-SOIC  
 N/A

RFQ



**UC3854N-F**  
 IC PFC CTRLR AVERAGE CURR 16DIP  
 N/A

RFQ



**UC3854DWTR-FG4**  
 IC PFC CTRLR AVERAGE CURR 16SOIC  
 N/A

RFQ



**UC3854N**  
 IC PFC CTRLR AVERAGE CURR 16DIP  
 N/A

RFQ



**UC3854DWTR**  
 IC PFC CTRLR AVERAGE CURR 16SOIC  
 N/A

RFQ



**UC3854DW**  
 IC PFC CTRLR AVERAGE CURR 16SOIC  
 N/A

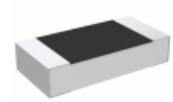
RFQ



**UC3854DWTRG4**  
 IC PFC CTRLR AVERAGE CURR 16SOIC  
 N/A

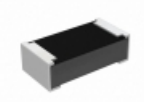
RFQ

## Guess You May Looking For



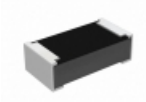
**RH73X2B10GKTN**  
 RES SMD 10G OHM 10% 1/4W 1206  
[TE Connectivity Passive Product](#)

RFQ



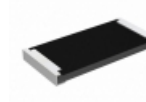
**RCP0603B430RGS2**  
 RES SMD 430 OHM 2% 3.9W 0603  
[Vishay Dale](#)

RFQ



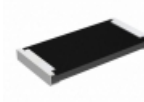
**RCP0603B1K00JS2**  
 RES SMD 1K OHM 5% 3.9W 0603  
[Vishay Dale](#)

RFQ



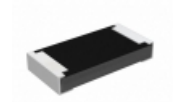
**RCP2512B1K30GEB**  
 RES SMD 1.3K OHM 2% 22W 2512  
[Vishay Dale](#)

RFQ



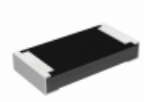
**RCP2512B33R0GEB**  
 RES SMD 33 OHM 2% 22W 2512  
[Vishay Dale](#)

RFQ



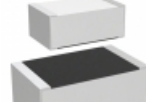
**RCP1206B560RJS2**  
 RES SMD 560 OHM 5% 11W 1206  
[Vishay Dale](#)

RFQ



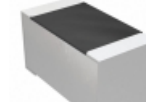
**RCP1206B62R0GS2**  
 RES SMD 62 OHM 2% 11W 1206  
[Vishay Dale](#)

RFQ



**M55342E06B15E0PT5**  
 RES SMD 15K OHM 1% 0.15W 0705  
[Vishay Dale](#)

RFQ



**M55342H12B649ART1**  
 RES SMD 649 OHM 0.1% 1/10W 0603  
[Vishay Dale](#)

RFQ



**RW1S5CAR080JET**  
 RES SMD 0.08 OHM 5% 1.5W J LEAD  
[Ohmite](#)

RFQ