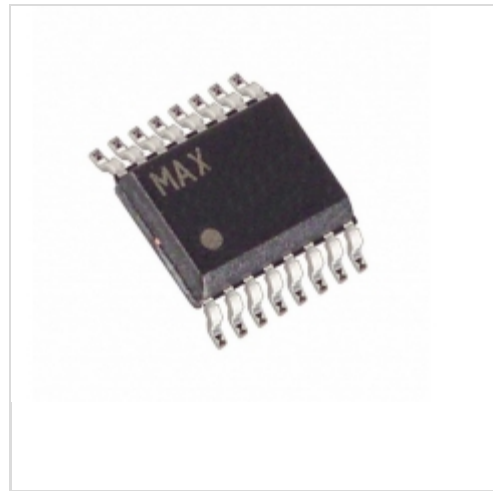


## MAX16947GEE/V+T



[Maxim Integrated](#)

IC CURR SENSE LDO SWITCH 16QSOP

Lead free / RoHS Compliant

Integrated Circuits (ICs)

[1.MAX16947GEE/V+T.pdf](#)

[2.MAX16947GEE/V+T.pdf](#)

[Buy Now](#)

We can supply Maxim Integrated MAX16947GEE/V+T, use the request quote form to request MAX16947GEE/V+T price, Maxim Integrated Datasheet PDF and lead time. Zeanoit.com is a professional electronic components distributor. With 3+ Million line items of available electronic components can ship in short lead-time, over 250 thousand part numbers of electronic components in stock for immediately delivery, which may include part number MAX16947GEE/V+T. The price and lead time for MAX16947GEE/V+T depending on the quantity required, availability and warehouse location.

### Shopping Process

1

Confirm the product

2

submit the order

3

payment

4

wait for delivery

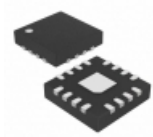
5

receive the goods

### Specifications

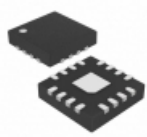
<b>Voltage - Supply:</b>	4.5 V ~ 18 V
<b>Supplier Device Package:</b>	16-QSOP
<b>Series:</b>	Automotive, AEC-Q100
<b>Packaging:</b>	Tape & Reel (TR)
<b>Package / Case:</b>	16-SSOP (0.154", 3.90mm Width)
<b>Operating Temperature:</b>	-40°C ~ 105°C
<b>Mounting Type:</b>	Surface Mount
<b>Current - Supply:</b>	2.1mA
<b>Applications:</b>	Automotive Systems, Remote Power

### Related products



**MAX16946GTE/V+**  
IC REG LDO/SWITCH ADJ 16TQFN  
[Maxim Integrated](#)

RFQ



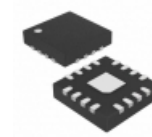
**MAX16948AGTE/V+**  
IC LDO/SWITCH ADJ DUAL 16TQFN  
[Maxim Integrated](#)

RFQ



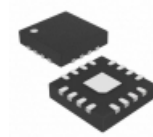
**MAX16946GUE/V+T**  
IC REG LDO/SWITCH ADJ 16TSSOP  
[Maxim Integrated](#)

RFQ



**MAX16946GTE/V+T**  
IC REG LDO/SWITCH ADJ 16TQFN  
[Maxim Integrated](#)

RFQ



**MAX16948AGTE/V+T**  
IC LDO/SWITCH ADJ DUAL 16TQFN  
[Maxim Integrated](#)

RFQ



**MAX1694EUB**  
[MAXIM](#)

RFQ



**MAX16947GEE/V+**  
IC CURR SENSE LDO SWITCH 16QSOP  
[Maxim Integrated](#)

RFQ



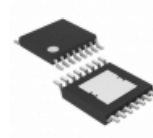
**MAX16948AGEE/V+T**  
[MAXIM](#)

RFQ



**MAX16948AGTE/V**  
[MAX](#)

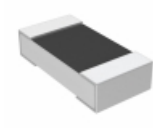
RFQ



**MAX16946GUE/V+**  
IC REG LDO/SWITCH ADJ 16TSSOP  
[Maxim Integrated](#)

RFQ

### Guess You May Looking For



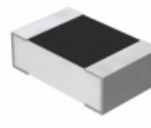
**PLT0603Z1301LBTS**  
RES SMD 1.3KOHM 0.01% 0.15W 0603  
[Vishay Thin Film](#)

RFQ



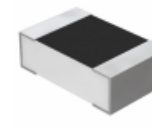
**Y162630K0000B9R**  
RES SMD 30K OHM 0.1% 0.3W 1506  
[Vishay Foil Resistors \(Division of Vishay Precisio](#)

RFQ



**Y16247K50000B0R**  
RES SMD 7.5K OHM 0.1% 1/5W 0805  
[Vishay Foil Resistors \(Division of Vishay Precisio](#)

RFQ



**Y16247K50000B9W**  
RES SMD 7.5K OHM 0.1% 1/5W 0805  
[Vishay Foil Resistors \(Division of Vishay Precisio](#)

RFQ



**Y17454K81500Q3R**  
RES SMD 4.815KOHM 0.01/4W J LEAD  
[Vishay Foil Resistors \(Division of Vishay Precisio](#)

RFQ



**9C06031A7680FKHFT**  
RES SMD 768 OHM 1% 1/10W 0603  
[Yageo](#)

RFQ



**9C12063A3R90JGHFT**  
RES SMD 3.9 OHM 5% 1/4W 1206  
[Yageo](#)

RFQ



**9C12063A1200FKHFT**  
RES SMD 120 OHM 1% 1/4W 1206  
[Yageo](#)

RFQ



**9C08052A5361FKHFT**  
RES SMD 5.36K OHM 1% 1/8W 0805  
[Yageo](#)

RFQ



**9T12062A1583DAHFT**  
RES SMD 158K OHM 0.5% 1/8W 1206  
[Yageo](#)

RFQ