

## E-L6202



**STMicroelectronics**

IC BRIDGE DRIVER PAR 18POWERDIP

Lead free / RoHS Compliant

Integrated Circuits (ICs)

[E-L6202.pdf](#)

**Buy Now**

We can supply STMicroelectronics E-L6202, use the request quote form to request E-L6202 price, STMicroelectronics Datasheet PDF and lead time. Zeanoit.com is a professional electronic components distributor. With 3+ Million line items of available electronic components can ship in short lead-time, over 250 thousand part numbers of electronic components in stock for immediately delivery, which may include part number E-L6202. The price and lead time for E-L6202 depending on the quantity required, availability and warehouse location.

### Shopping Process

**1**

Confirm the product

**2**

submit the order

**3**

payment

**4**

wait for delivery

**5**

receive the goods

### Specifications

<b>Voltage - Supply:</b>	12 V ~ 48 V
<b>Voltage - Load:</b>	12 V ~ 48 V
<b>Technology:</b>	BCDMOS
<b>Supplier Device Package:</b>	18-PowerDIP
<b>Series:</b>	-
<b>Rds On (Typ):</b>	300 mOhm
<b>Packaging:</b>	Tube
<b>Package / Case:</b>	18-DIP (0.300", 7.62mm)
<b>Output Configuration:</b>	Half Bridge (2)
<b>Operating Temperature:</b>	-40°C ~ 150°C (TJ)
<b>Mounting Type:</b>	Through Hole
<b>Load Type:</b>	Inductive
<b>Interface:</b>	Logic
<b>Features:</b>	Bootstrap Circuit
<b>Fault Protection:</b>	Over Temperature
<b>Current - Peak Output:</b>	-
<b>Current - Output / Channel:</b>	1.5A
<b>Applications:</b>	DC Motors, General Purpose

### Related products



**E-L6201PS**  
IC BRIDGE DRIVER PAR 20POWERSO  
[STMicroelectronics](#)

RFQ



**E-L6201PSTR**  
IC BRIDGE DRIVER PAR 20POWERSO  
[STMicroelectronics](#)

RFQ



**E-L5991AD**  
IC REG CTRLR FLYBACK 16SOIC  
[STMicroelectronics](#)

RFQ



**E-L6204**  
IC BRIDGE DRIVER PAR 20POWERDIP  
[STMicroelectronics](#)

RFQ



**E-L5991A**  
IC REG CTRLR FLYBACK 16DIP  
[STMicroelectronics](#)

RFQ



**E-L6205PD013TR**  
[ST](#)

RFQ



**E-L5973D013TR**  
in stock  
[ST](#)

RFQ



**E-L6207D013TR**  
IC BRIDGE DRIVER PAR 24SOIC  
[STMicroelectronics](#)

RFQ



**E-L6204D**  
IC BRIDGE DRIVER PAR 28SOIC  
[STMicroelectronics](#)

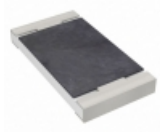
RFQ



**E-L6207D**  
IC BRIDGE DRIVER PAR 24SOIC  
[STMicroelectronics](#)

RFQ

### Guess You May Looking For



**PE2010FKF070R033L**  
RES SMD 0.033 OHM 1% 1/2W 2010  
[Yageo](#)

RFQ



**RNCF1210DTE820K**  
RES SMD 820K OHM 0.5% 1/3W 1210  
[Stackpole Electronics Inc.](#)

RFQ



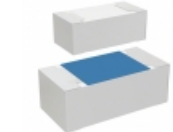
**RNCF2010BTC127R**  
RES SMD 127 OHM 0.1% 1/3W 2010  
[Stackpole Electronics Inc.](#)

RFQ



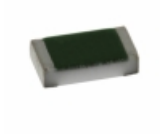
**RNCF1210DTC510K**  
RES SMD 510K OHM 0.5% 1/3W 1210  
[Stackpole Electronics Inc.](#)

RFQ



**MCS04020D1203CE000**  
RES SMD 120KOHM 0.25% 1/16W 0402  
[Vishay Beyschlag](#)

RFQ



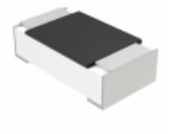
**TNPW060348R7BEEA**  
RES SMD 48.7 OHM 0.1% 1/10W 0603  
[Vishay Dale](#)

RFQ



**RNCF1210DTE21R0**  
RES SMD 21 OHM 0.5% 1/3W 1210  
[Stackpole Electronics Inc.](#)

RFQ



**MCT06030D2321BP500**  
RES SMD 2.32KOHM 0.1% 1/10W 0603  
[Vishay Beyschlag](#)

RFQ



**RT1206CRB0716RL**  
RES SMD 16 OHM 0.25% 1/4W 1206  
[Yageo](#)

RFQ



**RNCF2010BTC511K**  
RES SMD 511K OHM 0.1% 1/3W 2010  
[Stackpole Electronics Inc.](#)

RFQ