

S6E2C49J0AGB1000A



Cypress Semiconductor

IC MCU 32BIT 1.5MB FLASH 192BGA

Lead free / RoHS Compliant

Integrated Circuits (ICs)

[S6E2C49J0AGB1000A.pdf](#)

[Buy Now](#)

Out Stock

0 pcs

Minimum:1

Multiples:100

Manufacturer lead time 10 weeks

part#S6E2C49J0AGB1000A is available, see description of S6E2C49J0AGB1000A as below .

use the request quote form to request S6E2C49J0AGB1000A price and lead time.

Buy Electronic Components at zeanoit.com .we are an independent distributor of electronic components with extensive inventory in stock.

The price and lead time for S6E2C49J0AGB1000A depending on the quantity required, availability and warehouse location.Contact us today and our sales team will send you quotation soon.

Email: sales@zeanoit.com

Shopping Process

1

Confirm the product

2

submit the order

3

payment

4

wait for delivery

5

receive the goods

Specifications

Voltage - Supply (Vcc/Vdd):	2.7 V ~ 5.5 V
Supplier Device Package:	192-FBGA (12x12)
Speed:	200MHz
Series:	FM4 S6E2C4
RAM Size:	192K x 8
Program Memory Type:	FLASH
Program Memory Size:	1.5MB (1.5M x 8)
Peripherals:	DMA, I ² S, LVD, POR, PWM, WDT
Packaging:	Tray
Package / Case:	192-LFBGA
Oscillator Type:	Internal
Operating Temperature:	-40°C ~ 125°C (TA)
Number of I/O:	152
EEPROM Size:	-
Data Converters:	A/D 32x12b, D/A 2x12b
Core Size:	32-Bit
Core Processor:	ARM® Cortex®-M4F
Connectivity:	CAN, CSIO, EBI/EMI, I ² C, LIN, SD, SPI, UART/USART

Related products

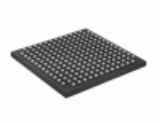


S6E2C49H0AGV2000A

IC MCU 32BIT 1.5MB FLASH 144LQFP

[Cypress Semiconductor Corp](#)

RFQ



S6E2C4AJ0AGB1000A

IC MCU 32BIT 2MB FLASH 192BGA

[Cypress Semiconductor Corp](#)

RFQ

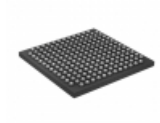


S6E2C48L0AGL2000A

IC MCU 32BIT 1MB FLASH 216LQFP

[Cypress Semiconductor Corp](#)

RFQ

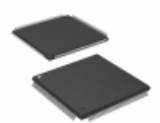


S6E2C48J0AGB1000A

IC MCU 32BIT 1MB FLASH 192BGA

[Cypress Semiconductor Corp](#)

RFQ



S6E2C48H0AGV2000A

IC MCU 32BIT 1MB FLASH 144LQFP

[Cypress Semiconductor Corp](#)

RFQ



S6E2C48J0AGV2000A

IC MCU 32BIT 1MB FLASH 176LQFP

[Cypress Semiconductor Corp](#)

RFQ



S6E2C4AH0AGV2000A

IC MCU 32BIT 2MB FLASH 144LQFP

[Cypress Semiconductor Corp](#)

RFQ



S6E2C49L0AGL2000A

IC MCU 32BIT 1.5MB FLASH 216LQFP

[Cypress Semiconductor Corp](#)

RFQ



S6E2C49J0AGV2000A

IC MCU 32BIT 1.5MB FLASH 176LQFP

[Cypress Semiconductor Corp](#)

RFQ



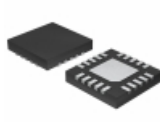
S6E2C4AJ0AGV2000A

IC MCU 32BIT 2MB FLASH 176LQFP

[Cypress Semiconductor Corp](#)

RFQ

Guess You May Looking For



MAX4820ETP+T

IC RELAY DRIVER 8CHAN 20-TQFN

[Maxim Integrated](#)

RFQ



S-1000C22-M5T1U

IC VOLT DETECTOR

[SII Semiconductor Corporation](#)

RFQ



S-80850CLNB-B7BT2U

IC VOLT DETECTOR 5.0V SC-82AB

[SII Semiconductor Corporation](#)

RFQ

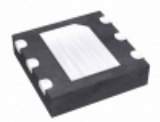


MIC2774N-26BM5-TR

IC SUPERVISOR DUAL LV SOT23-5

[Microchip Technology](#)

RFQ

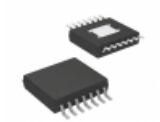


MAX1920ETT+T

IC REG BUCK ADJ 0.4A SYNC 6TDFN

[Maxim Integrated](#)

RFQ



LM2852YMXAX-1.3/NOPB

IC REG BUCK 1.3V 2A SYNC 14TSSOP

[Texas Instruments](#)

RFQ

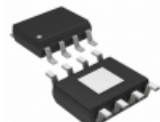


LV52130A0XA-VH

IC REG BST SWITCH CAP INV 15WLCSP

[ON Semiconductor](#)

RFQ



RAA230132GSB#HA0

IC REG BUCK 5V 3A 8HLSOP

[Renesas Electronics America](#)

RFQ

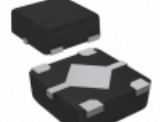


L79L05ACUTR

IC REG LDO -5V 0.1A SOT89-3

[STMicroelectronics](#)

RFQ



S-13R1E40-A4T2U3

IC REG LINEAR 4V 0.15A HSNT-4

[SII Semiconductor Corporation](#)

RFQ

