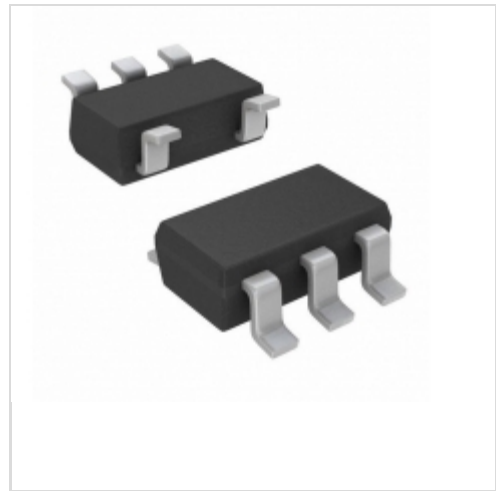


## MCP1316T-24MI/OT



**Microchip Technology**  
 IC SUPERVISOR 2.4V SOT23-5  
 Lead free / RoHS Compliant  
 Integrated Circuits (ICs)

- [1.MCP1316T-24MI/OT.pdf](#)
- [2.MCP1316T-24MI/OT.pdf](#)

**Buy Now**

**Out Stock**

**0 pcs**

Minimum:1

Multiples:100

Manufacturer lead time 10 weeks

We can supply MCP1316T-24MI/OT, use the request quote form to request MCP1316T-24MI/OT price and lead time. Zeano is a professional electronic components distributor. With 3+ Million line items of available electronic components can ship in short lead-time, over 250 thousand part numbers of electronic components in stock for immediately delivery, which may include part number MCP1316T-24MI/OT. The price and lead time for MCP1316T-24MI/OT depending on the quantity required and warehouse location. Contact us and our sales representative will provide you price. We look forward to work with you.

### Shopping Process

**1**

**Confirm the product**

**2**

**submit the order**

**3**

**payment**

**4**

**wait for delivery**

**5**

**receive the goods**

### Specifications

<b>Voltage - Threshold:</b>	2.4V
<b>Type:</b>	Simple Reset/Power-On Reset
<b>Supplier Device Package:</b>	SOT-23-5
<b>Series:</b>	-
<b>Reset Timeout:</b>	140 ms Minimum
<b>Reset:</b>	Active Low
<b>Packaging:</b>	Tape & Reel (TR)
<b>Package / Case:</b>	SC-74A, SOT-753
<b>Output:</b>	Push-Pull, Totem Pole
<b>Operating Temperature:</b>	-40°C ~ 85°C (TA)
<b>Number of Voltages Monitored:</b>	1
<b>Mounting Type:</b>	Surface Mount

### Related products



**MCP1316T-23LI/OT**  
 IC SUPERVISOR 2.3V SOT23-5  
[Microchip Technology](#)

**RFQ**



**MCP1316MT-45GE/OT**  
 IC SUPERVISOR 4.5V SOT23-5  
[Microchip Technology](#)

**RFQ**



**MCP1316T-20LI/OT**  
 IC SUPERVISOR 2V SOT23-5  
[Microchip Technology](#)

**RFQ**



**MCP1316MT-46LE/OT**  
 IC SUPERVISOR 4.6V SOT23-5  
[Microchip Technology](#)

**RFQ**



**MCP1316MT-46GE/OT**  
 IC SUPERVISOR 4.6V SOT23-5  
[Microchip Technology](#)

**RFQ**



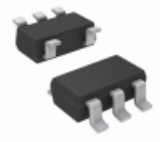
**MCP1316T-27LE/OT**  
 IC SUPERVISOR 2.7V SOT23-5  
[Microchip Technology](#)

**RFQ**



**MCP1316T-25LE/OT**  
 IC SUPERVISOR 2.5V SOT23-5  
[Microchip Technology](#)

**RFQ**



**MCP1316T-26JE/OT**  
 IC SUPERVISOR 2.6V SOT23-5  
[Microchip Technology](#)

**RFQ**



**MCP1316T-26LE/OT**  
 IC SUPERVISOR 2.6V SOT23-5  
[Microchip Technology](#)

**RFQ**



**MCP1316T-29AE/OT**  
 IC SUPERVISOR 2.9V SOT23-5  
[Microchip Technology](#)

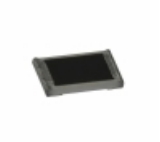
**RFQ**

### Guess You May Looking For



**9T04021A5602BAHF3**  
 RES SMD 56K OHM 0.1% 1/16W 0402  
[Yageo](#)

**RFQ**



**ERJ-XGEJ150Y**  
 RES SMD 15 OHM 5% 1/32W 01005  
[Panasonic Electronic Components](#)

**RFQ**



**RG3216P-2001-C-T5**  
 RES SMD 2K OHM 0.25% 1/4W 1206  
[Susumu](#)

**RFQ**



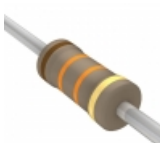
**RG3216P-2430-C-T5**  
 RES SMD 243 OHM 0.25% 1/4W 1206  
[Susumu](#)

**RFQ**



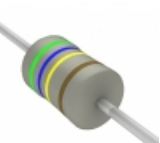
**PR01000103308JR500**  
 RES 3.3 OHM 1W 5% AXIAL  
[Vishay BC Components](#)

**RFQ**



**CFR-25JR-52-13K**  
 RES 13K OHM 1/4W 5% AXIAL  
[Yageo](#)

**RFQ**



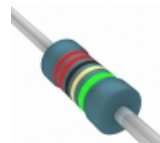
**LR2F560K**  
 RES 560K OHM 3/4W 1% AXIAL  
[TE Connectivity Passive Product](#)

**RFQ**



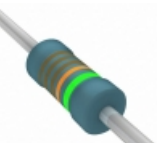
**CMF6022R100FKEA**  
 RES 22.1 OHM 1W 1% AXIAL  
[Vishay Dale](#)

**RFQ**



**MBA02040C2209DRP00**  
 RES 22 OHM 0.4W 0.5% AXIAL  
[Vishay BC Components](#)

**RFQ**



**MBB02070D1113DC100**  
 RES 111K OHM 0.6W 0.5% AXIAL  
[Vishay BC Components](#)

**RFQ**