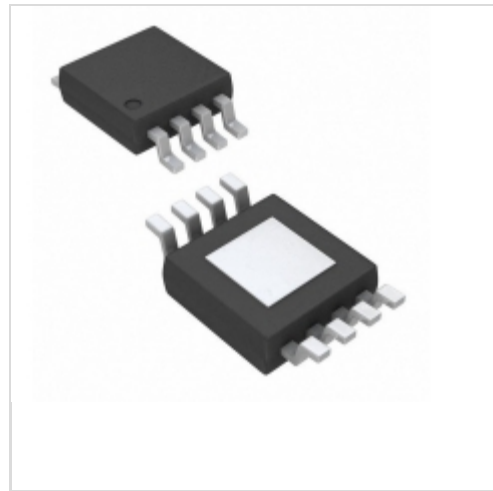


MP62181DH-LF-Z

MPS (Monolithic Power Systems)

IC CURR LIMIT SWITCH
Lead free / RoHS Compliant
Integrated Circuits (ICs)

[MP62181DH-LF-Z.pdf](#)

Buy Now

We can supply MPS (Monolithic Power Systems) MP62181DH-LF-Z, use the request quote form to request MP62181DH-LF-Z price, MPS (Monolithic Power Systems) Datasheet PDF and lead time. Zeano.com is a professional electronic components distributor. With 3+ Million line items of available electronic components can ship in short lead-time, over 250 thousand part numbers of electronic components in stock for immediately delivery, which may include part number MP62181DH-LF-Z. The price and lead time for MP62181DH-LF-Z depending on the quantity required, availability and warehouse location.

Out Stock
0 pcs

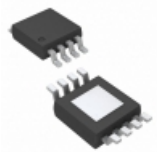
Minimum: 1

Multiples: 100

Manufacturer lead time 10 weeks

Shopping Process
1
Confirm the product
2
submit the order
3
payment
4
wait for delivery
5
receive the goods
Specifications

Voltage - Supply (Vcc/Vdd):	Not Required
Voltage - Load:	2.7 V ~ 5.5 V
Switch Type:	General Purpose
Supplier Device Package:	8-MSOP-EP
Series:	-
Rds On (Typ):	75 mOhm
Ratio - Input:Output:	1:1
Packaging:	Tape & Reel (TR)
Package / Case:	8-TSSOP, 8-MSOP (0.118", 3.00mm Width) Exposed Pad
Output Type:	-
Output Configuration:	High Side
Operating Temperature:	-40°C ~ 85°C (TA)
Number of Outputs:	1
Interface:	On/Off
Input Type:	-
Features:	Status Flag
Fault Protection:	Current Limiting (Fixed), Over Temperature, Reverse Current, UVLO
Current - Output (Max):	2A

Related products


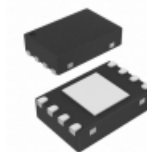
MP6219DN-LF
IC CURR LIMIT SWITCH
[Monolithic Power Systems Inc.](#)

RFQ

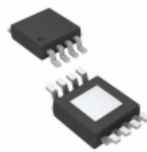

MP62180DS-LF-Z
IC CURR LIMIT SWITCH
[Monolithic Power Systems Inc.](#)

RFQ

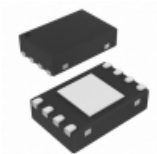

MP62260DS
[MPS](#)

RFQ


MP62181DD-LF-Z
IC CURR LIMIT SWITCH
[Monolithic Power Systems Inc.](#)

RFQ


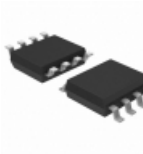
MP62181DH-LF-P
IC CURR LIMIT SWITCH
[Monolithic Power Systems Inc.](#)

RFQ


MP62181DD-LF-P
IC CURR LIMIT SWITCH
[Monolithic Power Systems Inc.](#)

RFQ

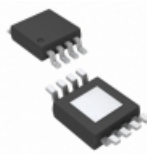

MP62181DS-LF
IC CURR LIMIT SWITCH
[Monolithic Power Systems Inc.](#)

RFQ


MP62181DS-LF-Z
IC CURR LIMIT SWITCH
[Monolithic Power Systems Inc.](#)

RFQ


MP62180DS-LF
IC CURR LIMIT SWITCH
[Monolithic Power Systems Inc.](#)

RFQ


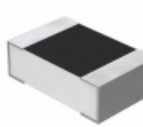
MP6219DN-LF-Z
IC CURR LIMIT SWITCH
[Monolithic Power Systems Inc.](#)

RFQ
Guess You May Looking For

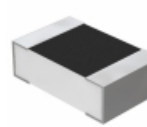

CGSSL2R051J
RES SMD 0.051 OHM 5% 2W 4823
[TE Connectivity Passive Product](#)

RFQ

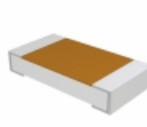

RW1S0BAR050FT
RES SMD 0.05 OHM 1% 1W J LEAD
[Ohmite](#)

RFQ


Y16303K00000A0W
RES SMD 3K OHM 0.05% 1/4W 1206
[Vishay Foil Resistors \(Division of Vishay Preciso\)](#)

RFQ


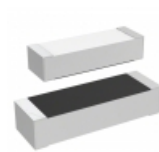
Y1630165R000Q0W
RES SMD 165 OHM 0.02% 1/4W 1206
[Vishay Foil Resistors \(Division of Vishay Preciso\)](#)

RFQ


D55342H07B169BRWS
RES SMD 169K OHM 0.1% 1/4W 1206
[Vishay Dale](#)

RFQ

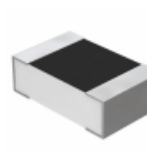

M55342E06B198BRT0
RES SMD 198K OHM 0.1% 0.15W 0705
[Vishay Dale](#)

RFQ


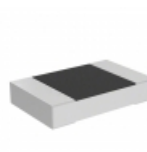
M55342H04B249BRWS
RES SMD 249K OHM 0.1% 0.15W 1505
[Vishay Dale](#)

RFQ


Y145580R6000B0W
RES SMD 80.6 OHM 0.1% 1/5W 1506
[Vishay Foil Resistors \(Division of Vishay Preciso\)](#)

RFQ


Y16301K00000T0W
RES SMD 1K OHM 0.01% 1/4W 1206
[Vishay Foil Resistors \(Division of Vishay Preciso\)](#)

RFQ


PLTT0805Z4931QGT5
RES SMD 4.93K OHM 0.02% 1/4W 0805
[Vishay Thin Film](#)

RFQ

