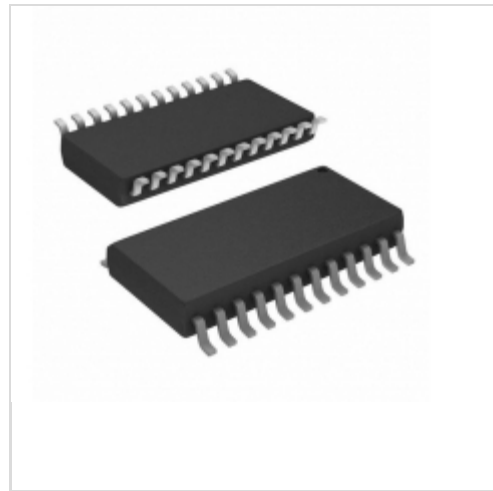


## MCZ33976EG



[NXP Semiconductors / Freescale](#)

IC MOTOR DRIVER SPI 24SOIC

Lead free / RoHS Compliant

Integrated Circuits (ICs)

[MCZ33976EG.pdf](#)

[Buy Now](#)

We can supply MCZ33976EG, use the request quote form to request MCZ33976EG price and lead time. Zeano is a professional electronic components distributor. With 3+ Million line items of available electronic components can ship in short lead-time, over 250 thousand part numbers of electronic components in stock for immediately delivery, which may include part number MCZ33976EG. The price and lead time for MCZ33976EG depending on the quantity required and warehouse location. Contact us and our sales representative will provide you price. We look forward to work with you.

### Shopping Process

1

Confirm the product

2

submit the order

3

payment

4

wait for delivery

5

receive the goods

### Specifications

<b>Voltage - Supply:</b>	4.5 V ~ 5.5 V
<b>Voltage - Load:</b>	6.5 V ~ 26 V
<b>Technology:</b>	-
<b>Supplier Device Package:</b>	24-SOIC
<b>Step Resolution:</b>	-
<b>Series:</b>	-
<b>Packaging:</b>	Tube
<b>Package / Case:</b>	24-SOIC (0.295", 7.50mm Width)
<b>Output Configuration:</b>	Half Bridge (8)
<b>Operating Temperature:</b>	-40°C ~ 150°C (TJ)
<b>Mounting Type:</b>	Surface Mount
<b>Motor Type - Stepper:</b>	Bipolar
<b>Motor Type - AC, DC:</b>	-
<b>Interface:</b>	SPI
<b>Function:</b>	Driver - Fully Integrated, Control and Power Stage
<b>Current - Output:</b>	40mA
<b>Applications:</b>	Automotive

### Related products



**MCZ33972TEWR2**

in stock  
[FREESCALE](#)

RFQ



**MCZ33977EGR2**

IC MOTOR DRIVER SPI 24SOIC  
[NXP USA Inc.](#)

RFQ



**MCZ33975EK**

IC DETECTOR MULT SWITCH 32-SOIC  
[NXP USA Inc.](#)

RFQ



**MCZ33977EG**

IC MOTOR DRIVER SPI 24SOIC  
[NXP USA Inc.](#)

RFQ



**MCZ33989EG**

IC SYSTEM BASIS CHIP CAN 28-SOIC  
[NXP USA Inc.](#)

RFQ



**MCZ33975AEKR2**

IC SWITCH DETECT MULT ENH 32SOIC  
[NXP USA Inc.](#)

RFQ



**MCZ33975EKR2**

IC DETECTOR MULT SWITCH 32-SOIC  
[NXP USA Inc.](#)

RFQ



**MCZ33976EG/R2**

in stock  
[FREESCALE](#)

RFQ



**MCZ33976EGR2**

IC MOTOR DRIVER SPI 24SOIC  
[NXP USA Inc.](#)

RFQ



**MCZ33975AEK**

IC MULTIPLE SWITCH DETECT 32SOIC  
[NXP USA Inc.](#)

RFQ

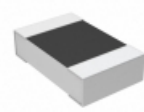
### Guess You May Looking For



**SM6227FT1K91**

RES SMD 1.91K OHM 1% 3W 6227  
[Stackpole Electronics Inc.](#)

RFQ



**RP73D2A255KBTG**

RES SMD 255K OHM 0.1% 1/8W 0805  
[TE Connectivity Passive Product](#)

RFQ



**RP73D1J2K8BTG**

RES SMD 2.8K OHM 0.1% 1/10W 0603  
[TE Connectivity Passive Product](#)

RFQ



**RG2012V-6981-W-T5**

RES SMD 6.98KOHM 0.05% 1/8W 0805  
[Susumu](#)

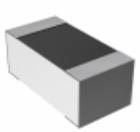
RFQ



**RG3216V-2741-D-T5**

RES SMD 2.74K OHM 0.5% 1/4W 1206  
[Susumu](#)

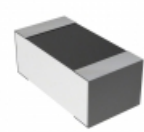
RFQ



**RN73C1J453RBTG**

RES SMD 453 OHM 0.1% 1/16W 0603  
[TE Connectivity Passive Product](#)

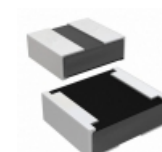
RFQ



**RN73C1J95K3BTG**

RES SMD 95.3KOHM 0.1% 1/16W 0603  
[TE Connectivity Passive Product](#)

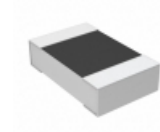
RFQ



**RCP0505W1K50GEB**

RES SMD 1.5K OHM 2% 5W 0505  
[Vishay Dale](#)

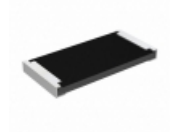
RFQ



**1676164-5**

RES SMD 11.8KOHM 0.1% 1/10W 0805  
[TE Connectivity Passive Product](#)

RFQ



**RCP2512B10R0GEA**

RES SMD 10 OHM 2% 22W 2512  
[Vishay Dale](#)

RFQ