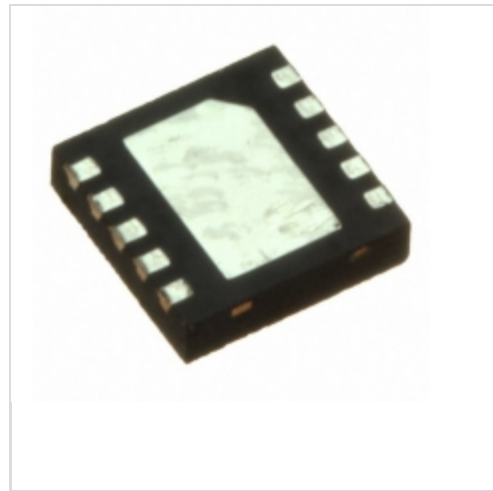


MAX16024PTBS+T



[Maxim Integrated](#)

IC BATTERY BACKUP ADJ 10TDFN

Lead free / RoHS Compliant

Integrated Circuits (ICs)

[1.MAX16024PTBS+T.pdf](#)

[2.MAX16024PTBS+T.pdf](#)

[Buy Now](#)

Out Stock

0 pcs

Minimum:1

Multiples:100

Manufacturer lead time 10 weeks

part#MAX16024PTBS+T is available, see description of MAX16024PTBS+T as below .

use the request quote form to request MAX16024PTBS+T price and lead time.

Buy Electronic Components at zeanoit.com .we are an independent distributor of electronic components with extensive inventory in stock.

The price and lead time for MAX16024PTBS+T depending on the quantity required, availability and warehouse location.Contact us today and our sales team will send you quotation soon.

Email: sales@zeanoit.com

Shopping Process

1

Confirm the product

2

submit the order

3

payment

4

wait for delivery

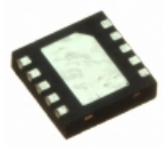
5

receive the goods

Specifications

Supplier Device Package:	10-TDFN-EP (3x3)
Series:	-
Packaging:	Tape & Reel (TR)
Package / Case:	10-WDFDN Exposed Pad
Operating Temperature:	-40°C ~ 85°C (TA)
Number of Cells:	-
Interface:	-
Function:	Power Management
Fault Protection:	-
Battery Chemistry:	-

Related products

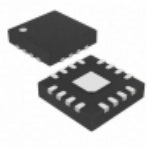


MAX16024PTBT18+T

IC BATTERY BACKUP 1.8V 10TDFN

[Maxim Integrated](#)

RFQ

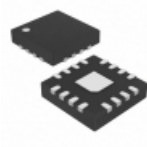


MAX16025TE+T

IC SUPERVISORY CIRC DL 16TQFN

[Maxim Integrated](#)

RFQ



MAX16025TE+

IC SUPERVISORY CIRC DL 16TQFN

[Maxim Integrated](#)

RFQ

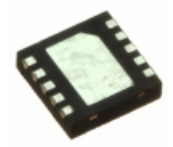


MAX16025ETE+

in stock

[MAXIM](#)

RFQ

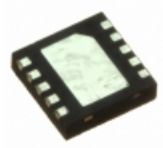


MAX16024LTBY+T

IC BATTERY BACKUP ADJ 10TDFN

[Maxim Integrated](#)

RFQ

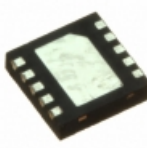


MAX16024PTBR+T

IC BATTERY BACKUP ADJ 10TDFN

[Maxim Integrated](#)

RFQ

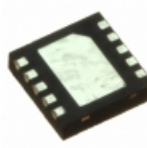


MAX16024LTBT+T

IC BATTERY BACKUP ADJ 10TDFN

[Maxim Integrated](#)

RFQ

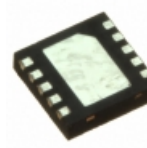


MAX16024LTBZ18+T

IC BATTERY BACKUP 1.8V 10TDFN

[Maxim Integrated](#)

RFQ



MAX16024PTBS25+T

IC BATTERY BACKUP 2.5V 10TDFN

[Maxim Integrated](#)

RFQ



MAX16024LTBW+T

[MAXIM](#)

RFQ

Guess You May Looking For



RNCF2010DKE1R62

RES SMD 1.62 OHM 0.5% 1/4W 2010

[Stackpole Electronics Inc.](#)

RFQ



RT1206BRE07110KL

RES SMD 110K OHM 0.1% 1/4W 1206

[Yageo](#)

RFQ



SR1218KK-071K1L

RES SMD 1.1K OHM 1W 1812 WIDE

[Yageo](#)

RFQ



CRCW1218143RFKEK

RES SMD 143 OHM 1% 1W 1218

[Vishay Dale](#)

RFQ



TNPW040298K8BEED

RES SMD 98.8KOHM 0.1% 1/16W 0402

[Vishay Dale](#)

RFQ

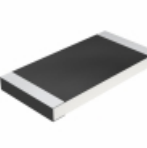


AT1206BRD07453KL

RES SMD 453K OHM 0.1% 1/4W 1206

[Yageo](#)

RFQ



CRCW251210R0FKTH

RES SMD 10 OHM 1% 1W 2512

[Vishay Dale](#)

RFQ



RNCF2512DTE787R

RES SMD 787 OHM 0.5% 3/4W 2512

[Stackpole Electronics Inc.](#)

RFQ



RNCF2512DTE3K01

RES SMD 3.01K OHM 0.5% 1/2W 2512

[Stackpole Electronics Inc.](#)

RFQ



RNCF2512DTE28K7

RES SMD 28.7K OHM 0.5% 1/2W 2512

[Stackpole Electronics Inc.](#)

RFQ