

**MCF5206CAB25A**

[NXP Semiconductors / Freescale](#)

IC MCU 32BIT ROMLESS 160QFP

Lead free / RoHS Compliant

Integrated Circuits (ICs)

[MCF5206CAB25A.pdf](#)

Images are for reference only.

See Product Specifications for product details.

If you are interested to buy MCF5206CAB25A,Just Email us.

[Sales@zeanoit.com](mailto:Sales@zeanoit.com)

our sales team will reply you within 24 hours

## Shopping Process

**1**

Confirm the product

**2**

submit the order

**3**

payment

**4**

wait for delivery

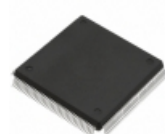
**5**

receive the goods

## Specifications

<b>Voltage - Supply (Vcc/Vdd):</b>	4.75 V ~ 5.25 V
<b>Supplier Device Package:</b>	160-QFP (28x28)
<b>Speed:</b>	25MHz
<b>Series:</b>	MCF520x
<b>RAM Size:</b>	512 x 8
<b>Program Memory Type:</b>	ROMless
<b>Program Memory Size:</b>	-
<b>Peripherals:</b>	POR, WDT
<b>Packaging:</b>	Tray
<b>Package / Case:</b>	160-BQFP
<b>Oscillator Type:</b>	External
<b>Operating Temperature:</b>	-40°C ~ 85°C (TA)
<b>Number of I/O:</b>	8
<b>EEPROM Size:</b>	-
<b>Data Converters:</b>	-
<b>Core Size:</b>	32-Bit
<b>Core Processor:</b>	Coldfire V2
<b>Connectivity:</b>	I <sup>2</sup> C, UART/USART

## Related products


**MCF5206AB33A**

IC MCU 32BIT ROMLESS 160QFP

[NXP USA Inc.](#)

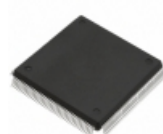
RFQ


**MCF5206E**

in stock

[FREESCALE](#)

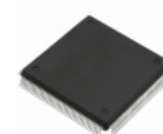
RFQ


**MCF5206ECFT40**

IC MCU 32BIT ROMLESS 160QFP

[NXP USA Inc.](#)

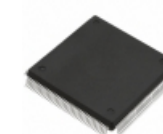
RFQ


**MCF5206AB16A**

IC MCU 32BIT ROMLESS 160QFP

[NXP USA Inc.](#)

RFQ


**MCF5206EAB54**

IC MCU 32BIT ROMLESS 160QFP

[NXP USA Inc.](#)

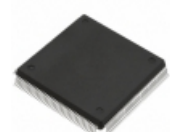
RFQ


**MCF51QW256CHS**

IC MCU 32BIT 256KB FLASH 44LGA

[NXP USA Inc.](#)

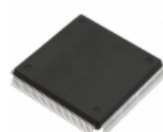
RFQ


**MCF5206AB25A**

IC MCU 32BIT ROMLESS 160QFP

[NXP USA Inc.](#)

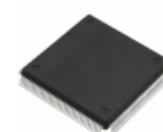
RFQ


**MCF5206CAB16A**

IC MCU 32BIT ROMLESS 160QFP

[NXP USA Inc.](#)

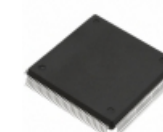
RFQ


**MCF5206ECAB40**

IC MCU 32BIT ROMLESS 160QFP

[NXP USA Inc.](#)

RFQ


**MCF5206EAB40**

IC MCU 32BIT ROMLESS 160QFP

[NXP USA Inc.](#)

RFQ

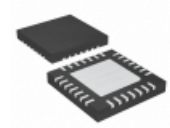
## Guess You May Looking For


**CS8240YTQVA5**

IC DRIVER PNP 500MA TO220-5

[ON Semiconductor](#)

RFQ


**MAX5984DETI+T**

IC CTRLR PD IEEE W/MOSFT 28TQFN

[Maxim Integrated](#)

RFQ


**S-80126ALMC-JALT2U**

IC VOLT DETECTOR 2.6V SOT23-5

[SII Semiconductor Corporation](#)

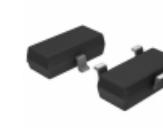
RFQ


**BU4310FVE-TR**

IC DETECTOR VOLT 1.0V CMOS 5VSOF

[Rohm Semiconductor](#)

RFQ


**MCP103T-195I/TT**

IC SUPERVISOR 1.95V LOW SOT-23B

[Microchip Technology](#)

RFQ


**S-80854CNUA-B9FT2U**

IC VOLT DETECTOR 5.4V SOT89-3

[SII Semiconductor Corporation](#)

RFQ


**X5169PZ-4.5A**

IC SUPERVISOR CPU 16K EE 8-DIP

[Intersil](#)

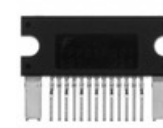
RFQ


**LM2647MTCX**

IC REG CTRLR BUCK 28TSSOP

[Texas Instruments](#)

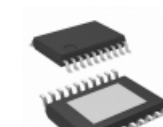
RFQ


**FPP06R001**

IC REG FWRD FULL BRDG ISO EPM15

[Fairchild/ON Semiconductor](#)

RFQ


**TL720M05QPWPRQ1**

IC REG LDO 5V 0.4A 20HTSSOP

[Texas Instruments](#)

RFQ