

**LYT0002D**



**Power Integrations**

IC LED DRIVER OFFLINE 146MA 8SO  
Lead free / RoHS Compliant  
Integrated Circuits (ICs)

[LYT0002D.pdf](#)

**Buy Now**

We can supply Power Integrations LYT0002D, use the request quote form to request LYT0002D price, Power Integrations Datasheet PDF and lead time. Zeanoit.com is a professional electronic components distributor. With 3+ Million line items of available electronic components can ship in short lead-time, over 250 thousand part numbers of electronic components in stock for immediately delivery, which may include part number LYT0002D. The price and lead time for LYT0002D depending on the quantity required, availability and warehouse location.

**Out Stock**  
**0 pcs**  
Minimum:1  
Multiples:100  
Manufacturer lead time 10 weeks

PRICE	
1 pcs	\$0.95
10 pcs	\$0.84
25 pcs	\$0.759
100 pcs	\$0.664
250 pcs	\$0.583
500 pcs	\$0.515
1000 pcs	\$0.406
2500 pcs	\$0.379
5000 pcs	\$0.36

**Shopping Process**

**1**

**Confirm the product**

**2**

**submit the order**

**3**

**payment**

**4**

**wait for delivery**

**5**

**receive the goods**

**Specifications**

<b>Voltage - Supply (Min):</b>	85VAC
<b>Voltage - Supply (Max):</b>	308VAC
<b>Voltage - Output:</b>	-
<b>Type:</b>	AC DC Offline Switcher
<b>Topology:</b>	Flyback, SEPIC, Step-Down (Buck), Step-Up (Boost)
<b>Supplier Device Package:</b>	8-SO
<b>Series:</b>	LYTSwitch™-0
<b>Packaging:</b>	Cut Tape (CT)
<b>Package / Case:</b>	8-SOIC (0.154", 3.90mm Width) 7 leads
<b>Operating Temperature:</b>	-40°C ~ 125°C (TJ)
<b>Number of Outputs:</b>	1
<b>Mounting Type:</b>	Surface Mount
<b>Internal Switch(s):</b>	Yes
<b>Frequency:</b>	66kHz
<b>Dimming:</b>	-
<b>Current - Output / Channel:</b>	146mA
<b>Applications:</b>	-

**Related products**



**LYT0004P**  
IC LED DRIVER OFFLINE 225MA 8DIP  
[Power Integrations](#)

**RFQ**



**LYT0005D**  
IC LED DRIVER OFFLINE 275MA 8SO  
[Power Integrations](#)

**RFQ**



**LYT0004D**  
IC LED DRIVER OFFLINE 225MA 8SO  
[Power Integrations](#)

**RFQ**



**LYT0005P**  
IC LED DRIVER OFFLINE 275MA 8DIP  
[Power Integrations](#)

**RFQ**



**LYT0006D**  
IC LED DRIVER OFFLINE 401MA 8SO  
[Power Integrations](#)

**RFQ**



**LYT0002D-TL**  
IC LED DRIVER OFFLINE 146MA 8SO  
[Power Integrations](#)

**RFQ**



**LYT0002P**  
IC LED DRIVER OFFLINE 146MA 8DIP  
[Power Integrations](#)

**RFQ**



**LYT0005D-TL**  
IC LED DRIVER OFFLINE 275MA 8SO  
[Power Integrations](#)

**RFQ**



**LYT0004D-TL**  
IC LED DRIVER OFFLINE 225MA 8SO  
[Power Integrations](#)

**RFQ**



**LYT0006D-TL**  
IC LED DRIVER OFFLINE 401MA 8SO  
[Power Integrations](#)

**RFQ**

**Guess You May Looking For**



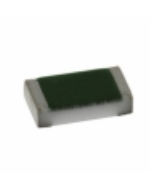
**HRG3216P-3741-D-T1**  
RES SMD 3.74K OHM 0.5% 1W 1206  
[Susumu](#)

**RFQ**



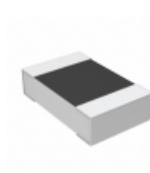
**PAT0603E1980BST1**  
RES SMD 198 OHM 0.1% 0.15W 0603  
[Vishay Thin Film](#)

**RFQ**



**TNPW060357R6BEEN**  
RES SMD 57.6 OHM 0.1% 1/10W 0603  
[Vishay Dale](#)

**RFQ**



**RN73C2A84R5BTDF**  
RES SMD 84.5 OHM 0.1% 1/10W 0805  
[TE Connectivity Passive Product](#)

**RFQ**



**SM4124FT43R2**  
RES SMD 43.2 OHM 1% 2W 4124  
[Stackpole Electronics Inc.](#)

**RFQ**



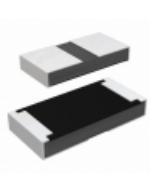
**RT1206WRD07470RL**  
RES SMD 470 OHM 0.05% 1/4W 1206  
[Yageo](#)

**RFQ**



**RT1206WRD0784R5L**  
RES SMD 84.5 OHM 0.05% 1/4W 1206  
[Yageo](#)

**RFQ**



**RCP1206W560R3TP**  
RES SMD 560 OHM 5% 11W 1206  
[Vishay Dale](#)

**RFQ**



**PTN1206E9421BST1**  
RES SMD 9.42K OHM 0.1% 0.4W 1206  
[Vishay Thin Film](#)

**RFQ**



**RG1608V-3091-D-T5**  
RES SMD 3.09KOHM 0.5% 1/10W 0603  
[Susumu](#)

**RFQ**

