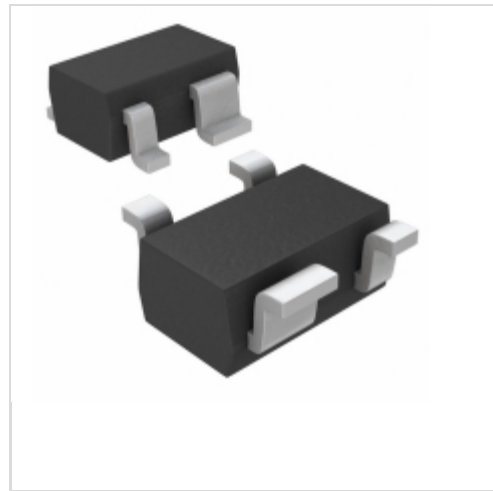


**MAX6388XS29D6-T**



**Maxim Integrated**  
IC MPU/RESET CIRC 2.93V SC70-4  
Contains lead / RoHS non-compliant  
Integrated Circuits (ICs)

- [1.MAX6388XS29D6-T.pdf](#)
- [2.MAX6388XS29D6-T.pdf](#)

**Buy Now**

We can supply MAX6388XS29D6-T, use the request quote form to request MAX6388XS29D6-T price and lead time. Zeano is a professional electronic components distributor. With 3+ Million line items of available electronic components can ship in short lead-time, over 250 thousand part numbers of electronic components in stock for immediately delivery, which may include part number MAX6388XS29D6-T. The price and lead time for MAX6388XS29D6-T depending on the quantity required and warehouse location. Contact us and our sales representative will provide you price. We look forward to work with you.

Shopping Process

**1**

Confirm the product

**2**

submit the order

**3**

payment

**4**

wait for delivery

**5**

receive the goods

Specifications

<b>Voltage - Threshold:</b>	2.93V, Adj
<b>Type:</b>	Multi-Voltage Supervisor
<b>Supplier Device Package:</b>	SC-70-4
<b>Series:</b>	-
<b>Reset Timeout:</b>	560 ms Minimum
<b>Reset:</b>	Active High
<b>Packaging:</b>	Tape & Reel (TR)
<b>Package / Case:</b>	SC-82A, SOT-343
<b>Output:</b>	Push-Pull, Totem Pole
<b>Operating Temperature:</b>	-40°C ~ 125°C (TA)
<b>Number of Voltages Monitored:</b>	2
<b>Mounting Type:</b>	Surface Mount

Related products



**MAX6388XS29D4-T**  
in stock  
[MAXIM](#)

RFQ



**MAX6388XS30D2-T**  
IC MPU/RESET CIRC 3.00V SC70-4  
[Maxim Integrated](#)

RFQ



**MAX6388XS29D4-T**  
IC MPU/RESET CIRC 2.93V SC70-4  
[Maxim Integrated](#)

RFQ



**MAX6388XS29D7-T**  
in stock  
[MAXIM](#)

RFQ



**MAX6388XS29D5-T**  
in stock  
[MAXIM](#)

RFQ



**MAX6388XS29D5-T**  
IC MPU/RESET CIRC 2.93V SC70-4  
[Maxim Integrated](#)

RFQ



**MAX6388XS30D1-T**  
in stock  
[MAXIM](#)

RFQ



**MAX6388XS30D1-T**  
IC MPU/RESET CIRC 3.00V SC70-4  
[Maxim Integrated](#)

RFQ



**MAX6388XS29D7-T**  
IC MPU/RESET CIRC 2.93V SC70-4  
[Maxim Integrated](#)

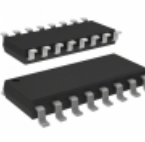
RFQ



**MAX6388XS29D6-T**  
in stock  
[MAXIM](#)

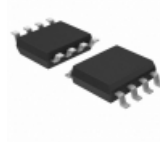
RFQ

Guess You May Looking For



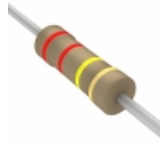
**4816P-T02-330**  
RES ARRAY 15 RES 33 OHM 16SOIC  
[Bourns Inc.](#)

RFQ



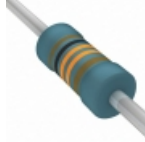
**Y1365V0173BA0R**  
RES ARRAY 4 RES MULT OHM 8SOIC  
[Vishay Foil Resistors \(Division of Vishay Preciso\)](#)

RFQ



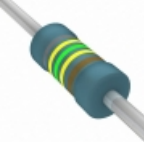
**CF12JT220K**  
RES 220K OHM 1/2W 5% AXIAL  
[Stackpole Electronics Inc.](#)

RFQ



**MBA02040C1133FCT00**  
RES 113K OHM 0.4W 1% AXIAL  
[Vishay BC Components](#)

RFQ



**MBA02040C8454FRP00**  
RES 8.45M OHM 0.4W 1% AXIAL  
[Vishay BC Components](#)

RFQ



**CMF5530K000FKRE**  
RES 30K OHM 1/2W 1% AXIAL  
[Vishay Dale](#)

RFQ



**MBA02040C1800FC100**  
RES 180 OHM 0.4W 1% AXIAL  
[Vishay BC Components](#)

RFQ



**MBB02070D4992FC100**  
RES 49.9K OHM 0.6W 1% AXIAL  
[Vishay BC Components](#)

RFQ



**RNF14BTE22K3**  
RES 22.3K OHM 1/4W .1% AXIAL  
[Stackpole Electronics Inc.](#)

RFQ



**RN60C7152DRE6**  
RES 71.5K OHM 1/4W .5% AXIAL  
[Vishay Dale](#)

RFQ