

**MAX6463XR29+T**

**Maxim Integrated**

IC VOLT DETECTOR LP SC70-3

Lead free / RoHS Compliant

Integrated Circuits (ICs)

1.MAX6463XR29+T.pdf

2.MAX6463XR29+T.pdf

**Buy Now**
**Out Stock**
**0 pcs**

Minimum:1

Multiples:100

Manufacturer lead time 10 weeks

We can supply MAX6463XR29+T, use the request quote form to request MAX6463XR29+T price and lead time. Zeano is a professional electronic components distributor. With 3+ Million line items of available electronic components can ship in short lead-time, over 250 thousand part numbers of electronic components in stock for immediately delivery, which may include part number MAX6463XR29+T. The price and lead time for MAX6463XR29+T depending on the quantity required and warehouse location. Contact us and our sales representative will provide you price. We look forward to work with you.

## Shopping Process

**1**
**Confirm the product**
**2**
**submit the order**
**3**
**payment**
**4**
**wait for delivery**
**5**
**receive the goods**

## Specifications

<b>Voltage - Threshold:</b>	2.9V
<b>Type:</b>	Simple Reset/Power-On Reset
<b>Supplier Device Package:</b>	SC-70-3
<b>Series:</b>	-
<b>Reset Timeout:</b>	14 $\mu$ s Typical Propagation Delay
<b>Reset:</b>	Active Low
<b>Packaging:</b>	Tape & Reel (TR)
<b>Package / Case:</b>	SC-70, SOT-323
<b>Output:</b>	Open Drain or Open Collector
<b>Operating Temperature:</b>	-40°C ~ 125°C (TA)
<b>Number of Voltages Monitored:</b>	1
<b>Mounting Type:</b>	Surface Mount

## Related products


**MAX6463XR22+T**  
 IC VOLT DETECTOR LP SC70-3  
[Maxim Integrated](#)

RFQ


**MAX6463XR26+T**  
 IC VOLT DETECTOR LP SC70-3  
[Maxim Integrated](#)

RFQ


**MAX6463XR33+T**  
 IC VOLT DETECTOR LP SC70-3  
[Maxim Integrated](#)

RFQ


**MAX6463XR26-T**  
 in stock  
[MAXIM](#)

RFQ


**MAX6463XR46-T**  
 in stock  
[MAXIM](#)

RFQ


**MAX6463XR29-T**  
 in stock  
[MAXIM](#)

RFQ


**MAX6463XR22-T**  
 in stock  
[MAXIM](#)

RFQ


**MAX6463XR29+**  
 IC VOLT DETECTOR LP SC70-3  
[Maxim Integrated](#)

RFQ


**MAX6463XR46+T**  
 IC VOLT DETECTOR LP SC70-3  
[Maxim Integrated](#)

RFQ

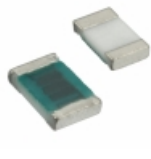

**MAX6463XR47+T**  
 IC VOLT DETECTOR LP SC70-3  
[Maxim Integrated](#)

RFQ

## Guess You May Looking For


**9T04021A2942CBHF3**  
 RES SMD 29.4K OHM 1/16W 0402  
[Yageo](#)

RFQ


**RP1608S-R56-J**  
 RES SMD 0.56 OHM 5% 1/5W 0603  
[Susumu](#)

RFQ


**RG2012N-8452-B-T1**  
 RES SMD 84.5K OHM 0.1% 1/8W 0805  
[Susumu](#)

RFQ


**RG3216P-1501-C-T5**  
 RES SMD 1.5K OHM 0.25% 1/4W 1206  
[Susumu](#)

RFQ


**CRA06S04326K1FTA**  
 RES ARRAY 2 RES 26.1K OHM 0606  
[Vishay Dale](#)

RFQ


**OY223KE**  
 RES 22K OHM 2W 10% AXIAL  
[Ohmite](#)

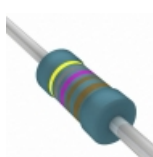
RFQ


**MP850-2.00-1%**  
 RES 2 OHM 50W 1% TO220  
[Caddock Electronics Inc.](#)

RFQ


**OL2215E-R52**  
 RES 220 OHM 1/2W 5% AXIAL  
[Ohmite](#)

RFQ


**MBA02040C4871FRP00**  
 RES 4.87K OHM 0.4W 1% AXIAL  
[Vishay BC Components](#)

RFQ


**RNF14BAE4K17**  
 RES 4.17K OHM 1/4W .1% AXIAL  
[Stackpole Electronics Inc.](#)

RFQ