

## CAT28LV64H13-25T



[AMI Semiconductor / ON Semiconductor](#)

IC EEPROM 64KBIT 250NS 28TSOP

Lead free / RoHS Compliant

Integrated Circuits (ICs)

[CAT28LV64H13-25T.pdf](#)

**Buy Now**

Images are for reference only.

See Product Specifications for product details.

If you are interested to buy CAT28LV64H13-25T, Just Email us.

Sales@zeanoit.com

our sales team will reply you within 24 hours

### Shopping Process

**1**

Confirm the product

**2**

submit the order

**3**

payment

**4**

wait for delivery

**5**

receive the goods

### Specifications

<b>Voltage - Supply:</b>	3 V ~ 3.6 V
<b>Supplier Device Package:</b>	28-TSOP
<b>Speed:</b>	250ns
<b>Series:</b>	-
<b>Packaging:</b>	Tape & Reel (TR)
<b>Package / Case:</b>	28-TSSOP (0.465", 11.80mm Width)
<b>Operating Temperature:</b>	0°C ~ 70°C (TA)
<b>Memory Type:</b>	Non-Volatile
<b>Memory Size:</b>	64Kb (8K x 8)
<b>Memory Format:</b>	EEPROM
<b>Interface:</b>	Parallel

### Related products



**CAT28LV64H13I20**

IC EEPROM 64KBIT 200NS 28TSOP

[ON Semiconductor](#)

RFQ



**CAT28LV64G25**

IC EEPROM 64KBIT 250NS 32PLCC

[ON Semiconductor](#)

RFQ



**CAT28LV64GI-25T**

IC EEPROM 64KBIT 250NS 32PLCC

[ON Semiconductor](#)

RFQ



**CAT28LV64GI25**

IC EEPROM 64KBIT 250NS 32PLCC

[ON Semiconductor](#)

RFQ



**CAT28LV64H1320**

IC EEPROM 64KBIT 200NS 28TSOP

[ON Semiconductor](#)

RFQ

**molex**

**CAT28LV64H13I20T**

[ON](#)

RFQ



**CAT28LV64GI20**

IC EEPROM 64KBIT 200NS 32PLCC

[ON Semiconductor](#)

RFQ



**CAT28LV64H1325**

IC EEPROM 64KBIT 250NS 28TSOP

[ON Semiconductor](#)

RFQ



**CAT28LV64G20**

IC EEPROM 64KBIT 200NS 32PLCC

[ON Semiconductor](#)

RFQ

**CATALYST**

**CAT28LV64H13-H-25**

[CATALYST](#)

RFQ

### Guess You May Looking For

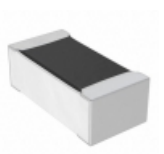


**RC1005F4991CS**

RES SMD 4.99K OHM 1% 1/16W 0402

[Samsung Electro-Mechanics America, Inc.](#)

RFQ

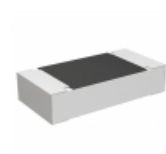


**CPF0402B10R2E1**

RES SMD 10.2 OHM 0.1% 1/16W 0402

[TE Connectivity Passive Product](#)

RFQ

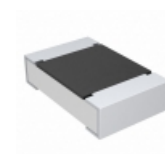


**ERA-8APB823V**

RES SMD 82K OHM 0.1% 1/4W 1206

[Panasonic Electronic Components](#)

RFQ

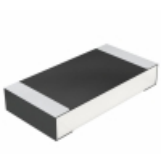


**CRCW080515K0FKEC**

RES SMD 15K OHM 1% 1/8W 0805

[Vishay Dale](#)

RFQ



**CRCW120621R5FKEC**

RES SMD 21.5 OHM 1% 1/4W 1206

[Vishay Dale](#)

RFQ

**YAGEO**

**AA1206FR-07649RL**

RES SMD 649 OHM 1% 1/4W 1206

[Yageo](#)

RFQ

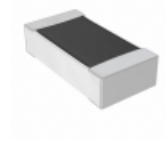


**RT0603DRD0715K8L**

RES SMD 15.8KOHM 0.5% 1/10W 0603

[Yageo](#)

RFQ

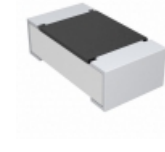


**RNCF0603DTE91K0**

RES SMD 91K OHM 0.5% 1/10W 0603

[Stackpole Electronics Inc.](#)

RFQ



**CRCW0603470RDHECP**

RES SMD 470 OHM 0.5% 1/10W 0603

[Vishay Dale](#)

RFQ



**RT0805CRD073R24L**

RES SMD 3.24 OHM 0.25% 1/8W 0805

[Yageo](#)

RFQ