

IS41LV16105B-50KLI-TR

ISSI (Integrated Silicon Solution, Inc.)

IC DRAM 16MBIT 50NS 42SOJ

Lead free / RoHS Compliant

Integrated Circuits (ICs)

[1.IS41LV16105B-50KLI-TR.pdf](#)
[2.IS41LV16105B-50KLI-TR.pdf](#)

part#IS41LV16105B-50KLI-TR is available, see description of IS41LV16105B-50KLI-TR as below .

use the request quote form to request IS41LV16105B-50KLI-TR price and lead time.

Buy Electronic Components at zeanoit.com .we are an independent distributor of electronic components with extensive inventory in stock.

The price and lead time for IS41LV16105B-50KLI-TR depending on the quantity required, availability and warehouse location.Contact us today and our sales team will send you quotation soon.

Email: sales@zeanoit.com

Shopping Process

1

Confirm the product

2

submit the order

3

payment

4

wait for delivery

5

receive the goods

Specifications

Voltage - Supply:	3 V ~ 3.6 V
Supplier Device Package:	42-SOJ
Speed:	50ns
Series:	-
Packaging:	Tape & Reel (TR)
Package / Case:	42-BSOJ (0.400", 10.16mm)
Operating Temperature:	-40°C ~ 85°C (TA)
Memory Type:	Volatile
Memory Size:	16Mb (1M x 16)
Memory Format:	DRAM
Interface:	Parallel

Related products


IS41LV16105B-50KL-TR

IC DRAM 16MBIT 50NS 42SOJ

[ISSI, Integrated Silicon Solution Inc](#)

RFQ


IS41LV16105B-50TE

in stock

[ISSI](#)

RFQ


IS41LV16105B-50TL

IC DRAM 16MBIT 50NS 44TSOP

[ISSI, Integrated Silicon Solution Inc](#)

RFQ


IS41LV16105B-50KLI

IC DRAM 16MBIT 50NS 42SOJ

[ISSI, Integrated Silicon Solution Inc](#)

RFQ


IS41LV16105B-50KI

in stock

[ISSI](#)

RFQ


IS41LV16105B-50KLE

in stock

[ISSI](#)

RFQ


IS41LV16105B-50TI

in stock

[ISSI](#)

RFQ

IS41LV16105B-50T

in stock

[ISSI](#)

RFQ


IS41LV16105B-50TL-TR

IC DRAM 16MBIT 50NS 44TSOP

[ISSI, Integrated Silicon Solution Inc](#)

RFQ

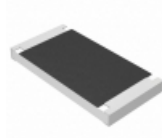

IS41LV16105B-50KLI

IC DRAM 16MBIT 50NS 42SOJ

[ISSI, Integrated Silicon Solution Inc](#)

RFQ

Guess You May Looking For


ERJ-1TNF1911U

RES SMD 1.91K OHM 1% 1W 2512

[Panasonic Electronic Components](#)

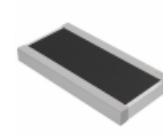
RFQ


RR0816P-1072-D-04C

RES SMD 10.7KOHM 0.5% 1/16W 0603

[Susumu](#)

RFQ


LTR18EZPF10R0

RES SMD 10 OHM 3/4W 1206 WIDE

[Rohm Semiconductor](#)

RFQ


RC0805DR-072K21L

RES SMD 2.21K OHM 0.5% 1/8W 0805

[Yageo](#)

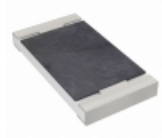
RFQ


CR1206-FX-1272ELF

RES SMD 12.7K OHM 1% 1/4W 1206

[Bourns Inc.](#)

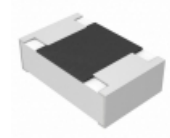
RFQ


RC2010JK-0743KL

RES SMD 43K OHM 5% 3/4W 2010

[Yageo](#)

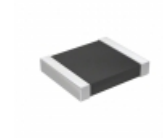
RFQ


ERJ-S06F3011V

RES SMD 3.01K OHM 1% 1/8W 0805

[Panasonic Electronic Components](#)

RFQ


AC1210FR-0710K5L

RES SMD 10.5K OHM 1% 1/2W 1210

[Yageo](#)

RFQ


RNCF1206DTC909K

RES SMD 909K OHM 0.5% 1/3W 1206

[Stackpole Electronics Inc.](#)

RFQ


RG3216P-1372-D-T5

RES SMD 13.7K OHM 0.5% 1/4W 1206

[Susumu](#)

RFQ