

**LNK4214D-TL**

**Power Integrations**

IC OFF-LINE CNTRLR 15W 8SO  
Lead free / RoHS Compliant  
Integrated Circuits (ICs)

[LNK4214D-TL.pdf](#)

**Buy Now**

**Out Stock**

**0 pcs**

Minimum:1

Multiples:100

Manufacturer lead time 10 weeks

Images are for reference only.

See Product Specifications for product details.

If you are interested to buy LNK4214D-TL,Just Email us.

Sales@zeanoit.com

our sales team will reply you within 24 hours

**Shopping Process**

**1**

**Confirm the product**

**2**

**submit the order**

**3**

**payment**

**4**

**wait for delivery**

**5**

**receive the goods**

**Specifications**

<b>Voltage - Supply (Vcc/Vdd):</b>	5 V ~ 16.5 V
<b>Voltage - Breakdown:</b>	-
<b>Topology:</b>	Flyback
<b>Series:</b>	LinkSwitch™-4
<b>Power (Watts):</b>	15W
<b>Output Isolation:</b>	Isolated
<b>Operating Temperature:</b>	-25°C ~ 125°C (TJ)
<b>Internal Switch(s):</b>	No
<b>Frequency - Switching:</b>	65kHz
<b>Fault Protection:</b>	Over Temperature, Over Voltage, Short Circuit
<b>Duty Cycle:</b>	-
<b>Control Features:</b>	-

**Related products**

**LNK4323D-TL**

IC OFF-LINE CNTRLR 10W 8SO  
[Power Integrations](#)

**RFQ**


**LNK4215D-TL**

IC OFF-LINE CNTRLR 18W 8SO  
[Power Integrations](#)

**RFQ**


**LNK419LG**

IC LED DRIVER OFFL DIM ESIP-7F  
[Power Integrations](#)

**RFQ**


**LNK419EG**

IC LED DRIVER OFFL DIM ESIP-7C  
[Power Integrations](#)

**RFQ**


**LNK4313EG**

[POWER](#)

**RFQ**


**LNK420LG**

IC LED DRIVER OFFL DIM ESIP-7F  
[Power Integrations](#)

**RFQ**


**LNK418LG**

IC LED DRIVER OFFL DIM ESIP-7F  
[Power Integrations](#)

**RFQ**


**LNK4322S-TL**

IC OFF-LINE CNTRLR 5W SOT23-6  
[Power Integrations](#)

**RFQ**


**LNK420EG**

IC LED DRIVER OFFL DIM ESIP-7C  
[Power Integrations](#)

**RFQ**


**LNK4302S-TL**

IC OFF-LINE CNTRLR 5W SOT23-6  
[Power Integrations](#)

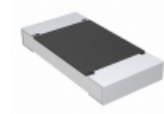
**RFQ**

**Guess You May Looking For**

**RNCF0402BTC165R**

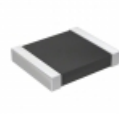
RES SMD 165 OHM 0.1% 1/16W 0402  
[Stackpole Electronics Inc.](#)

**RFQ**


**CRCW20101M30FKTF**

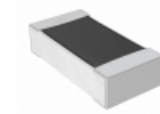
RES SMD 1.3M OHM 1% 3/4W 2010  
[Vishay Dale](#)

**RFQ**


**RT1210FRD0752K3L**

RES SMD 52.3K OHM 1% 1/4W 1210  
[Yageo](#)

**RFQ**


**RNCS0603BTE46K4**

RES SMD 46.4KOHM 0.1% 1/16W 0603  
[Stackpole Electronics Inc.](#)

**RFQ**


**RNCF1206BTC1K91**

RES SMD 1.91K OHM 0.1% 1/3W 1206  
[Stackpole Electronics Inc.](#)

**RFQ**


**RNCF1206BTC1K80**

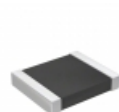
RES SMD 1.8K OHM 0.1% 1/3W 1206  
[Stackpole Electronics Inc.](#)

**RFQ**


**RT0805BRE073K57L**

RES SMD 3.57K OHM 0.1% 1/8W 0805  
[Yageo](#)

**RFQ**


**RT1210DRD0726R1L**

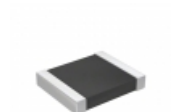
RES SMD 26.1 OHM 0.5% 1/4W 1210  
[Yageo](#)

**RFQ**


**RNCF0805BTE10R5**

RES SMD 10.5 OHM 0.1% 1/8W 0805  
[Stackpole Electronics Inc.](#)

**RFQ**


**RT1210DRD074K75L**

RES SMD 4.75K OHM 0.5% 1/4W 1210  
[Yageo](#)

**RFQ**