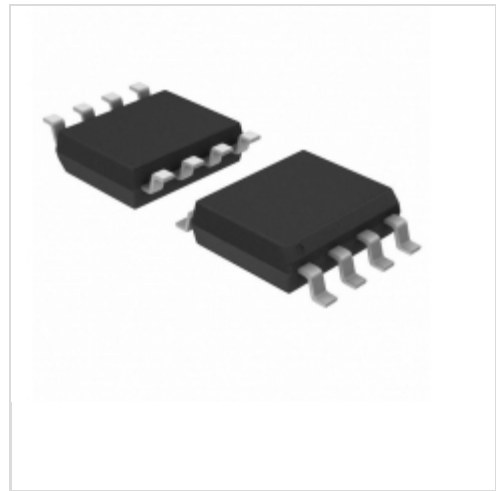


AT24C01A-10SI-2.5



Microchip Technology

IC EEPROM 1KBIT 400KHZ 8SOIC
Contains lead / RoHS non-compliant
Integrated Circuits (ICs)

[AT24C01A-10SI-2.5.pdf](#)

Buy Now

Images are for reference only.

See Product Specifications for product details.

If you are interested to buy AT24C01A-10SI-2.5, Just Email us.

Sales@zeanoit.com

our sales team will reply you within 24 hours

Shopping Process

1

Confirm the product

2

submit the order

3

payment

4

wait for delivery

5

receive the goods

Specifications

Voltage - Supply:	2.5 V ~ 5.5 V
Supplier Device Package:	8-SOIC
Speed:	400kHz
Series:	-
Packaging:	Tube
Package / Case:	8-SOIC (0.154", 3.90mm Width)
Operating Temperature:	-40°C ~ 85°C (TA)
Memory Type:	Non-Volatile
Memory Size:	1Kb (128 x 8)
Memory Format:	EEPROM
Interface:	I ² C, 2-Wire Serial

Related products



AT24C01A-10SI-2.7
IC EEPROM 1KBIT 400KHZ 8SOIC
[Microchip Technology](#)

RFQ



AT24C01A-10SI2.7
[AT](#)

RFQ



AT24C01A-10SI-1.8-T
IC EEPROM 1KBIT 400KHZ 8SOIC
[Microchip Technology](#)

RFQ



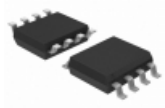
AT24C01A-10SL-1.8
[ATMEL](#)

RFQ



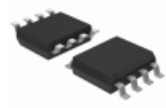
AT24C01A-10SI
IC EEPROM 1KBIT 400KHZ 8SOIC
[Microchip Technology](#)

RFQ



AT24C01A-10SI-2.7-T
IC EEPROM 1KBIT 400KHZ 8SOIC
[Microchip Technology](#)

RFQ



AT24C01A-10SI-2.7C
IC EEPROM 1KBIT 400KHZ 8SOIC
[Microchip Technology](#)

RFQ



AT24C01A-10SI-1.8
IC EEPROM 1KBIT 400KHZ 8SOIC
[Microchip Technology](#)

RFQ



AT24C01A-10SI-1.8B
in stock
[ATMEL](#)

RFQ



AT24C01A-10SI-2.5
in stock
[ATMEL](#)

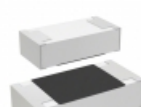
RFQ

Guess You May Looking For



LTR10EZPF3300
RES SMD 330 OHM 1/4W 0805 WIDE
[Rohm Semiconductor](#)

RFQ



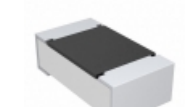
CR0603-JW-123ELF
RES SMD 12K OHM 5% 1/10W 0603
[Bourns Inc.](#)

RFQ



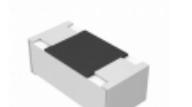
RT0402BRB073K24L
RES SMD 3.24KOHM 0.1% 1/16W 0402
[Yageo](#)

RFQ



CRCW0603806RFKEA
RES SMD 806 OHM 1% 1/10W 0603
[Vishay Dale](#)

RFQ



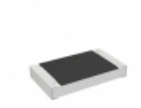
ERJ-1GNF21R0C
RES SMD 21 OHM 1% 1/20W 0201
[Panasonic Electronic Components](#)

RFQ



RV0603FR-0759KL
RES SMD 59K OHM 1% 1/10W 0603
[Yageo](#)

RFQ



RCS0603107RFKEA
RES SMD 107 OHM 1% 1/4W 0603
[Vishay Dale](#)

RFQ



AC1210JR-0747RL
RES SMD 47 OHM 5% 1/2W 1210
[Yageo](#)

RFQ



RNCF0805DKE1K24
RES SMD 1.24K OHM 0.5% 1/8W 0805
[Stackpole Electronics Inc.](#)

RFQ



RT0603BRD07284KL
RES SMD 284K OHM 0.1% 1/10W 0603
[Yageo](#)

RFQ