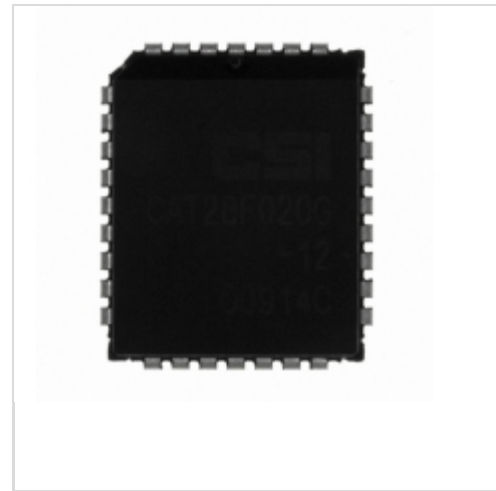


CAT28F001GI-12B



[AMI Semiconductor / ON Semiconductor](#)

IC FLASH 1MBIT 120NS 32PLCC
Lead free / RoHS Compliant
Integrated Circuits (ICs)

[CAT28F001GI-12B.pdf](#)

[Buy Now](#)

Images are for reference only.

See Product Specifications for product details.

If you are interested to buy CAT28F001GI-12B,Just Email us.

Sales@zeanoit.com

our sales team will reply you within 24 hours

Shopping Process

1

Confirm the product

2

submit the order

3

payment

4

wait for delivery

5

receive the goods

Specifications

Voltage - Supply:	4.5 V ~ 5.5 V
Supplier Device Package:	32-PLCC (11.43x13.97)
Speed:	120ns
Series:	-
Packaging:	Tray
Package / Case:	32-LCC (J-Lead)
Operating Temperature:	-40°C ~ 85°C (TA)
Memory Type:	Non-Volatile
Memory Size:	1Mb (128K x 8)
Memory Format:	FLASH
Interface:	Parallel

Related products



CAT28F001GI-12TT
IC FLASH 1MBIT 120NS 32PLCC
[ON Semiconductor](#)

RFQ



CAT28F001GI-12T
IC FLASH 1MBIT 120NS 32PLCC
[ON Semiconductor](#)

RFQ



CAT28F001G-12B
IC FLASH 1MBIT 120NS 32PLCC
[ON Semiconductor](#)

RFQ



CAT28F001GI-90T
IC FLASH 1MBIT 90NS 32PLCC
[ON Semiconductor](#)

RFQ



CAT28F001HI-12T
IC FLASH 1MBIT 120NS 32TSOP
[ON Semiconductor](#)

RFQ



CAT28F001G-90B
IC FLASH 1MBIT 90NS 32PLCC
[ON Semiconductor](#)

RFQ



CAT28F001H-12T
IC FLASH 1MBIT 120NS 32TSOP
[ON Semiconductor](#)

RFQ



CAT28F001G-12T
IC FLASH 1MBIT 120NS 32PLCC
[ON Semiconductor](#)

RFQ



CAT28F001G-12TT
IC FLASH 1MBIT 120NS 32PLCC
[ON Semiconductor](#)

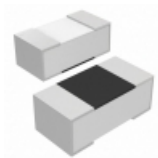
RFQ



CAT28F001G-12BT
IC FLASH 1MBIT 120NS 32PLCC
[ON Semiconductor](#)

RFQ

Guess You May Looking For



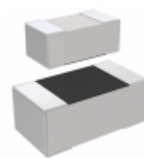
MCR006YRTJ333
RES SMD 33K OHM 5% 1/20W 0201
[Rohm Semiconductor](#)

RFQ



TRR01MZPF1070
RES SMD 107 OHM 1% 1/16W 0402
[Rohm Semiconductor](#)

RFQ



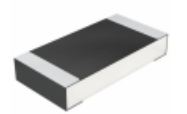
RC1005F5620CS
RES SMD 562 OHM 1% 1/16W 0402
[Samsung Electro-Mechanics America, Inc.](#)

RFQ



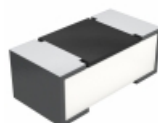
CRCW040247R0FKEE
RES SMD 47 OHM 1% 1/16W 0402
[Vishay Dale](#)

RFQ



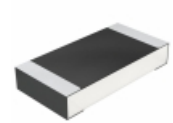
CRCW1206806RFKEC
RES SMD 806 OHM 1% 1/4W 1206
[Vishay Dale](#)

RFQ



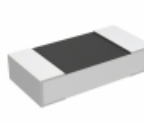
CRCW02011K33FNED
RES SMD 1.33K OHM 1% 1/20W 0201
[Vishay Dale](#)

RFQ



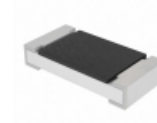
CRCW12061K65FKTA
RES SMD 1.65K OHM 1% 1/4W 1206
[Vishay Dale](#)

RFQ



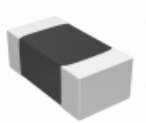
PCR1206-10MJ1
RES SMD 10M OHM 5% 1/3W 1206
[Riedon](#)

RFQ



CRCW120619K1FKEAHP
RES SMD 19.1K OHM 1% 3/4W 1206
[Vishay Dale](#)

RFQ



RNCF0402BTE5K36
RES SMD 5.36KOHM 0.1% 1/16W 0402
[Stackpole Electronics Inc.](#)

RFQ