

LT10AQ1131F



Laird Technologies - EMI
BOARD SHIELD 1.0X1.5" FRAME
Lead free / RoHS Compliant
RF/IF and RFID

Buy Now

Out Stock

0 pcs

Minimum:1

Multiples:100

Manufacturer lead time 10 weeks

Images are for reference only.

See Product Specifications for product details.

If you are interested to buy LT10AQ1131F,Just Email us.

Sales@zeanoit.com

our sales team will reply you within 24 hours

Shopping Process

1

Confirm the product

2

submit the order

3

payment

4

wait for delivery

5

receive the goods

Specifications

Width - Overall:	1.000" (25.40mm)
Ventilation:	-
Type:	Frame
Series:	-
Packaging:	Bulk
Mounting Type:	-
Length - Overall:	1.500" (38.10mm)
Height - Overall:	-

Related products



LT1097S8#PBF
IC OPAMP GP 700KHZ 8SO
[Linear Technology](#)

RFQ



LT11012
[LT](#)

RFQ



LT10YD106KAT2H
CAP CER 10UF 16V X5R 1210
[AVX Corporation](#)

RFQ



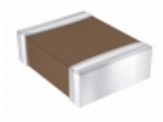
LT10BTS8
[LINEAR](#)

RFQ



LT1098
[LT](#)

RFQ



LT10YD106MAT2H
CAP CER 10UF 16V X5R 1210
[AVX Corporation](#)

RFQ



LT1097S8
[LINEAR](#)

RFQ



LT1097S8#TRPBF
IC OPAMP GP 700KHZ 8SO
[Linear Technology](#)

RFQ



LT1098CS8
[LT](#)

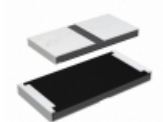
RFQ



LT1101ACN8#PBF
IC OPAMP INSTR 37KHZ 8DIP
[Linear Technology](#)

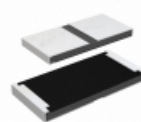
RFQ

Guess You May Looking For



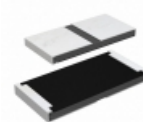
RCP2512W270RGS2
RES SMD 270 OHM 2% 22W 2512
[Vishay Dale](#)

RFQ



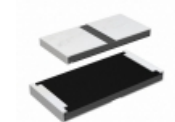
RCP2512W43R0JS2
RES SMD 43 OHM 5% 22W 2512
[Vishay Dale](#)

RFQ



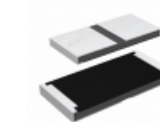
RCP2512W12R0GS2
RES SMD 12 OHM 2% 22W 2512
[Vishay Dale](#)

RFQ



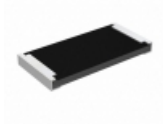
RCP2512W270RJEC
RES SMD 270 OHM 5% 22W 2512
[Vishay Dale](#)

RFQ



RCP2512W51R0GEC
RES SMD 51 OHM 2% 22W 2512
[Vishay Dale](#)

RFQ



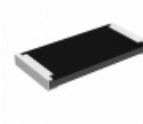
RCP2512B16R0JEC
RES SMD 16 OHM 5% 22W 2512
[Vishay Dale](#)

RFQ



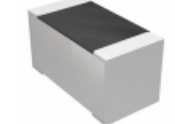
RCP0505W620RGS2
RES SMD 620 OHM 2% 5W 0505
[Vishay Dale](#)

RFQ



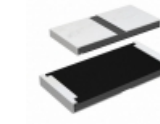
RCP2512B390RGS2
RES SMD 390 OHM 2% 22W 2512
[Vishay Dale](#)

RFQ



M55342E12B33B2RT5
RES SMD 33.2KOHM 0.1% 1/10W 0603
[Vishay Dale](#)

RFQ



RCP2512W1K80JS2
RES SMD 1.8K OHM 5% 22W 2512
[Vishay Dale](#)

RFQ