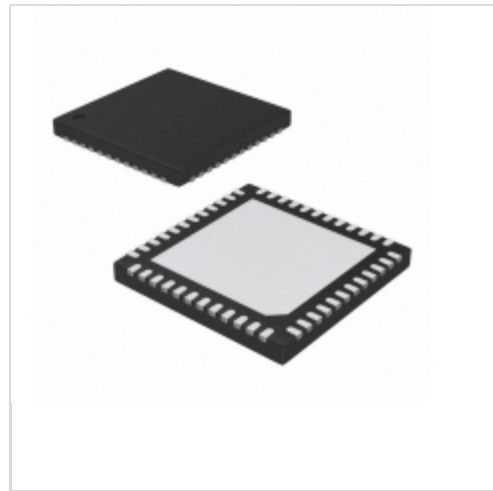


**MAX17100ETM+T**

**Maxim Integrated**

IC REG BOOST INT-SWITCH 48-TQFN

Lead free / RoHS Compliant

Integrated Circuits (ICs)

1.MAX17100ETM+T.pdf

2.MAX17100ETM+T.pdf

**Buy Now**

We can supply MAX17100ETM+T, use the request quote form to request MAX17100ETM+T price and lead time. Zeano is a professional electronic components distributor. With 3+ Million line items of available electronic components can ship in short lead-time, over 250 thousand part numbers of electronic components in stock for immediately delivery, which may include part number MAX17100ETM+T. The price and lead time for MAX17100ETM+T depending on the quantity required and warehouse location. Contact us and our sales representative will provide you price. We look forward to work with you.

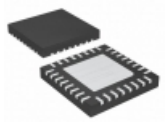
## Shopping Process

**1**
**Confirm the product**
**2**
**submit the order**
**3**
**payment**
**4**
**wait for delivery**
**5**
**receive the goods**

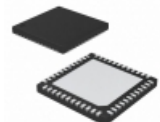
## Specifications

<b>Voltage - Supply:</b>	2.5 V ~ 6 V
<b>Supplier Device Package:</b>	48-TQFN-EP (6x6)
<b>Series:</b>	-
<b>Packaging:</b>	Tape & Reel (TR)
<b>Package / Case:</b>	48-WFQFN Exposed Pad
<b>Operating Temperature:</b>	-40°C ~ 85°C
<b>Mounting Type:</b>	Surface Mount
<b>Current - Supply:</b>	-
<b>Applications:</b>	LCD TV/Monitor

## Related products


**MAX17101ETJ+**  
 IC REG CTRLR BUCK 32TQFN  
[Maxim Integrated](#)

RFQ


**MAX17100ETM+**  
 IC REG BOOST INT-SWITCH 48-TQFN  
[Maxim Integrated](#)

RFQ


**MAX17100ETM+TC8W**  
[MAXIM](#)

RFQ


**MAX170DMJA**  
[MAXIM](#)

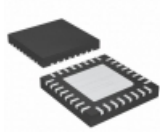
RFQ


**MAX170DEWE+T**  
 IC ADC 12BIT SERIAL 16-SOIC  
[Maxim Integrated](#)

RFQ


**MAX1710**  
 in stock  
[MAXIM](#)

RFQ


**MAX17101ETJ+T**  
 IC REG CTRLR BUCK 32TQFN  
[Maxim Integrated](#)

RFQ


**MAX17100EVKIT+**  
 KIT EVAL FOR MAX17100  
[Maxim Integrated](#)

RFQ

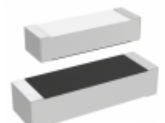

**MAX171**  
 in stock  
[MAXIM](#)

RFQ

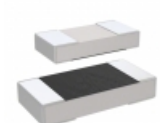

**MAX17101**  
 in stock  
[MAXIM](#)

RFQ

## Guess You May Looking For


**M55342H04B49E9RTI**  
 RES SMD 49.9K OHM 1% 0.15W 1505  
[Vishay Dale](#)

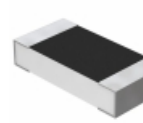
RFQ


**M55342K01B10E5RTIV**  
 RES SMD 10.5K OHM 1% 1/20W 0502  
[Vishay Dale](#)

RFQ


**Y11725K11000T9R**  
 RES SMD 5.11K OHM 1/10W 0805  
[Vishay Foil Resistors \(Division of Vishay Precisio](#)

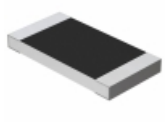
RFQ


**Y16253K92000T0W**  
 RES SMD 3.92KOHM 0.01% 0.3W 1206  
[Vishay Foil Resistors \(Division of Vishay Precisio](#)

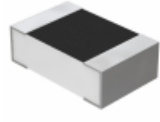
RFQ


**Y1121300R000T0R**  
 RES SMD 300OHM 0.01% 1/4W J LEAD  
[Vishay Foil Resistors \(Division of Vishay Precisio](#)

RFQ


**Y162856K2000Q16R**  
 RES SMD 56.2KOHM 0.02% 3/4W 2512  
[Vishay Foil Resistors \(Division of Vishay Precisio](#)

RFQ


**Y16245K10000T0W**  
 RES SMD 5.1K OHM 0.01% 1/5W 0805  
[Vishay Foil Resistors \(Division of Vishay Precisio](#)

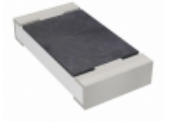
RFQ


**9C12063A3604FKHFT**  
 RES SMD 3.6M OHM 1% 1/4W 1206  
[Yageo](#)

RFQ


**9T12062A6042CAHFT**  
 RES SMD 60.4KOHM 0.25% 1/8W 1206  
[Yageo](#)

RFQ


**9T12062A38R3CBHFT**  
 RES SMD 38.3 OHM 0.25% 1/8W 1206  
[Yageo](#)

RFQ