

LT1244CS8#TRPBF



Linear Technology / Analog Devices

IC REG CTRLR BUCK ISO CM 8-SOIC

Lead free / RoHS Compliant

Integrated Circuits (ICs)

[LT1244CS8#TRPBF.pdf](#)

Buy Now

Out Stock

0 pcs

Minimum:1

Multiples:100

Manufacturer lead time 10 weeks

Images are for reference only.

See Product Specifications for product details.

If you are interested to buy LT1244CS8#TRPBF,Just Email us.

Sales@zeanoit.com

our sales team will reply you within 24 hours

Shopping Process

1

Confirm the product

2

submit the order

3

payment

4

wait for delivery

5

receive the goods

Specifications

Voltage - Supply (Vcc/Vdd):	10 V ~ 25 V
Voltage - Start Up:	16V
Voltage - Breakdown:	-
Topology:	Buck
Supplier Device Package:	8-SOIC
Series:	-
Power (Watts):	-
Packaging:	Tape & Reel (TR)
Package / Case:	8-SOIC (0.154", 3.90mm Width)
Output Isolation:	Isolated
Operating Temperature:	0°C ~ 100°C (TJ)
Internal Switch(s):	No
Frequency - Switching:	Up to 500kHz
Fault Protection:	-
Duty Cycle:	48%
Control Features:	Frequency Control

Related products



LT1244IN8

LT

RFQ



LT1244CS8#PBF

IC REG CTRLR BUCK ISO CM 8-SOIC

[Linear Technology](#)

RFQ



LT1244CN8

LT

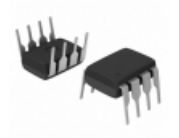
RFQ



LT1244CS8#TR

LINEAR

RFQ



LT1244IN8#PBF

IC REG CTRLR BUCK ISO CM 8-DIP

[Linear Technology](#)

RFQ



LT1244IS8#TR

LINEAR

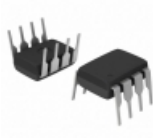
RFQ



LT1244IS8

LINEAR

RFQ



LT1244CN8#PBF

IC REG CTRLR BUCK ISO CM 8-DIP

[Linear Technology](#)

RFQ



LT1244CS8

LINEAR

RFQ



LT1244IS8#PBF

IC REG CTRLR BUCK ISO CM 8-SOIC

[Linear Technology](#)

RFQ

Guess You May Looking For



RNCF0402BTC17R8

RES SMD 17.8 OHM 0.1% 1/16W 0402

[Stackpole Electronics Inc.](#)

RFQ

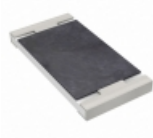


RNCF0805BTC332K

RES SMD 332K OHM 0.1% 1/8W 0805

[Stackpole Electronics Inc.](#)

RFQ

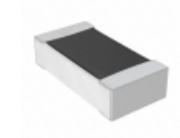


AC2512FK-07787RL

RES SMD 787 OHM 1% 1W 2512

[Yageo](#)

RFQ



CSR0603FKR150

RES SMD 0.15 OHM 1% 1/8W 0603

[Stackpole Electronics Inc.](#)

RFQ

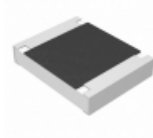


RG1005P-3011-B-T5

RES SMD 3.01KOHM 0.1% 1/16W 0402

[Susumu](#)

RFQ



ERJ-S14F1103U

RES SMD 110K OHM 1% 1/2W 1210

[Panasonic Electronic Components](#)

RFQ

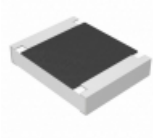


RNCF0805BTE22K0

RES SMD 22K OHM 0.1% 1/8W 0805

[Stackpole Electronics Inc.](#)

RFQ

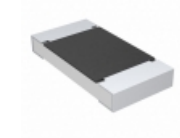


ERJ-S14F8201U

RES SMD 8.2K OHM 1% 1/2W 1210

[Panasonic Electronic Components](#)

RFQ

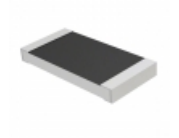


CRCW201012K4FKTF

RES SMD 12.4K OHM 1% 3/4W 2010

[Vishay Dale](#)

RFQ



RMCP2010FT36K0

RES SMD 36K OHM 1% 1W 2010

[Stackpole Electronics Inc.](#)

RFQ