

## AT17LV128-10NC



**Microchip Technology**

IC EEPROM FPGA 128KB 8-SOIC  
Contains lead / RoHS non-compliant  
Integrated Circuits (ICs)

[AT17LV128-10NC.pdf](#)

**Buy Now**

Images are for reference only.

See Product Specifications for product details.

If you are interested to buy AT17LV128-10NC, Just Email us.

Sales@zeanoit.com

our sales team will reply you within 24 hours

### Shopping Process

**1**

Confirm the product

**2**

submit the order

**3**

payment

**4**

wait for delivery

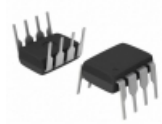
**5**

receive the goods

### Specifications

<b>Voltage - Supply:</b>	3 V ~ 3.6 V, 4.75 V ~ 5.25 V
<b>Supplier Device Package:</b>	8-SOIC
<b>Series:</b>	-
<b>Programmable Type:</b>	Serial EEPROM
<b>Packaging:</b>	Tube
<b>Package / Case:</b>	8-SOIC (0.154", 3.90mm Width)
<b>Operating Temperature:</b>	0°C ~ 70°C
<b>Memory Size:</b>	128kb

### Related products



**AT17LV128-10PC**  
IC SER CNFIG PROM 128K 3.3V 8DIP  
[Microchip Technology](#)

RFQ



**AT17LV128-10SC**  
IC SRL CONFIG EEPROM 128K 20SOIC  
[Microchip Technology](#)

RFQ



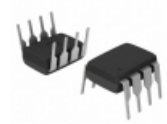
**AT17LV128-10JI**  
IC EEPROM FPGA 128KB 20-PLCC  
[Microchip Technology](#)

RFQ



**AT17LV128-10NI**  
IC EEPROM FPGA 128KB 8-SOIC  
[Microchip Technology](#)

RFQ



**AT17LV128-10PI**  
IC SRL CONFIG EEPROM 128K 8-DIP  
[Microchip Technology](#)

RFQ



**AT17LV128-10BJI**  
in stock  
[ATMEL](#)

RFQ



**AT17LV128-10NI**  
in stock  
[ATMEL](#)

RFQ



**AT17LV128-10BJC**  
in stock  
[ATMEL](#)

RFQ



**AT17LV128-10CI**  
IC SRL CONFIG EEPROM 128K 8-LAP  
[Microchip Technology](#)

RFQ



**AT17LV128-10JC**  
IC SER CFG PROM 128K 3.3V 20PLCC  
[Microchip Technology](#)

RFQ

### Guess You May Looking For



**AT1206DRE0733K2L**  
RES SMD 33.2K OHM 0.5% 1/4W 1206  
[Yageo](#)

RFQ



**RT0603CRD071K37L**  
RES SMD 1.37K OHM 1/10W 0603  
[Yageo](#)

RFQ



**RT0603CRD0724RL**  
RES SMD 24 OHM 0.25% 1/10W 0603  
[Yageo](#)

RFQ



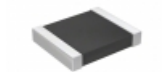
**RT0603CRD0714KL**  
RES SMD 14K OHM 0.25% 1/10W 0603  
[Yageo](#)

RFQ



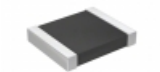
**RT0603CRD07274RL**  
RES SMD 274 OHM 0.25% 1/10W 0603  
[Yageo](#)

RFQ



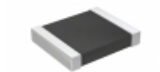
**RT1210FRD07174KL**  
RES SMD 174K OHM 1% 1/4W 1210  
[Yageo](#)

RFQ



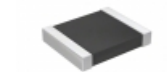
**RT1210FRD071K21L**  
RES SMD 1.21K OHM 1% 1/4W 1210  
[Yageo](#)

RFQ



**RT1210FRD0722RL**  
RES SMD 22 OHM 1% 1/4W 1210  
[Yageo](#)

RFQ



**RT1210FRD07464KL**  
RES SMD 464K OHM 1% 1/4W 1210  
[Yageo](#)

RFQ



**CRGH2010F75K**  
RES SMD 75K OHM 1% 1W 2010  
[TE Connectivity Passive Product](#)

RFQ