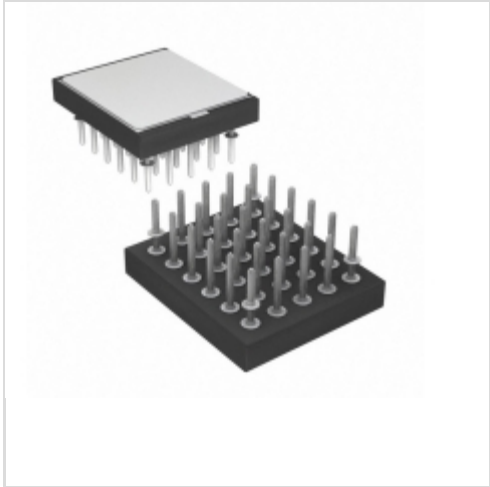


## AT28C010-25UM/883



**Microchip Technology**

IC EEPROM 1MBIT 250NS 30CPGA  
Contains lead / RoHS non-compliant  
Integrated Circuits (ICs)

[AT28C010-25UM/883.pdf](#)

**Buy Now**

part#AT28C010-25UM/883 is available, see description of AT28C010-25UM/883 as below .

use the request quote form to request AT28C010-25UM/883 price and lead time.  
Buy Electronic Components at zeanoit.com .we are an independent distributor of electronic components with extensive inventory in stock.

The price and lead time for AT28C010-25UM/883 depending on the quantity required, availability and warehouse location.Contact us today and our sales team will send you quotation soon.

Email: sales@zeanoit.com

### Shopping Process

**1**

Confirm the product

**2**

submit the order

**3**

payment

**4**

wait for delivery

**5**

receive the goods

### Specifications

<b>Voltage - Supply:</b>	4.5 V ~ 5.5 V
<b>Supplier Device Package:</b>	30-CPGA
<b>Speed:</b>	250ns
<b>Series:</b>	-
<b>Packaging:</b>	Tray
<b>Package / Case:</b>	30-BCPGA
<b>Operating Temperature:</b>	-55°C ~ 125°C (TC)
<b>Memory Type:</b>	Non-Volatile
<b>Memory Size:</b>	1Mb (128K x 8)
<b>Memory Format:</b>	EEPROM
<b>Interface:</b>	Parallel

### Related products



**AT28C010E-12D**

in stock  
[ATMEL](#)

RFQ



**AT28C010-25SI**

IC EEPROM 1MBIT 250NS 32SOIC  
[Microchip Technology](#)

RFQ



**AT28C010-W**

in stock  
[ATMEL](#)

RFQ



**AT28C010-25SC**

IC EEPROM 1MBIT 250NS 32SOIC  
[Microchip Technology](#)

RFQ



**AT28C010E**

in stock  
[ATMEL](#)

RFQ

**AT28C010-25FM/883**

in stock  
[ATMEL](#)

RFQ



**AT28C010-25LM/883C**

[ATMEL](#)

RFQ



**AT28C010-25UM/883**

in stock  
[ATMEL](#)

RFQ

**AT28C010-25LM/883**

in stock  
[ATMEL](#)

RFQ

**AT28C010E-12DM/883**

in stock  
[ATMEL](#)

RFQ

### Guess You May Looking For



**CRCW06031K50FKEC**

RES SMD 1.5K OHM 1% 1/10W 0603  
[Vishay Dale](#)

RFQ



**CRCW0402560RFKTD**

RES SMD 560 OHM 1% 1/16W 0402  
[Vishay Dale](#)

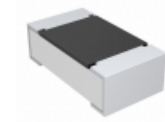
RFQ



**CRCW04022K55FKTD**

RES SMD 2.55K OHM 1% 1/16W 0402  
[Vishay Dale](#)

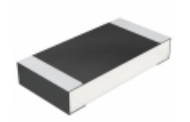
RFQ



**CRCW0603953KFKEAHP**

RES SMD 953K OHM 1% 1/4W 0603  
[Vishay Dale](#)

RFQ



**CRCW1206619RFKTA**

RES SMD 619 OHM 1% 1/4W 1206  
[Vishay Dale](#)

RFQ



**RNCF0805DTE1R37**

RES SMD 1.37 OHM 0.5% 1/8W 0805  
[Stackpole Electronics Inc.](#)

RFQ



**CRCW040217K4DHEDP**

RES SMD 17.4KOHM 0.5% 1/16W 0402  
[Vishay Dale](#)

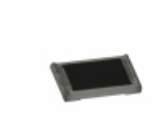
RFQ



**AC2010FK-0715RL**

RES SMD 15 OHM 1% 3/4W 2010  
[Yageo](#)

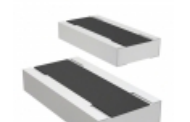
RFQ



**ERJ-XGNJ160Y**

RES SMD 16 OHM 5% 1/32W 01005  
[Panasonic Electronic Components](#)

RFQ



**RCL0612187RFKEA**

RES SMD 187 OHM 1/2W 1206 WIDE  
[Vishay Dale](#)

RFQ