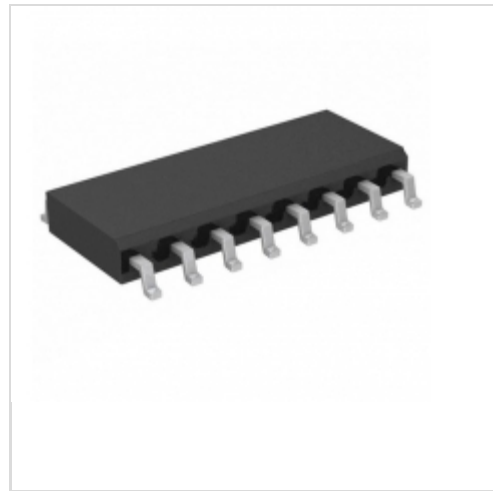


## EPCQ512ASI16N



[Altera \(Intel® Programmable Solutions Group\)](#)

IC QUAD-SERIAL CONFIG DEVICE 512

Lead free / RoHS Compliant

Integrated Circuits (ICs)

[EPCQ512ASI16N.pdf](#)

**Buy Now**

**Out Stock**

**0 pcs**

Minimum:1

Multiples:100

Manufacturer lead time 10 weeks

part#EPCQ512ASI16N is available, see description of EPCQ512ASI16N as below .

use the request quote form to request EPCQ512ASI16N price and lead time.

Buy Electronic Components at zeanoit.com .we are an independent distributor of electronic components with extensive inventory in stock.

The price and lead time for EPCQ512ASI16N depending on the quantity required, availability and warehouse location.Contact us today and our sales team will send you quotation soon.

Email: sales@zeanoit.com

### Shopping Process

**1**

**Confirm the product**

**2**

**submit the order**

**3**

**payment**

**4**

**wait for delivery**

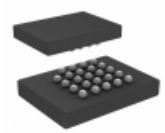
**5**

**receive the goods**

### Specifications

<b>Voltage - Supply:</b>	2.7 V ~ 3.6 V
<b>Supplier Device Package:</b>	16-SOIC
<b>Series:</b>	EPCQ
<b>Programmable Type:</b>	In System Programmable
<b>Packaging:</b>	Tube
<b>Package / Case:</b>	16-SOIC (0.295", 7.50mm Width)
<b>Operating Temperature:</b>	-40°C ~ 85°C
<b>Memory Size:</b>	512Mb

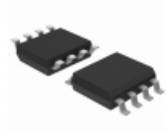
### Related products



**EPCQL256F24IN**

IC QUAD-SERIAL LOW VOLTAGE CONF  
[Altera](#)

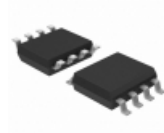
**RFQ**



**EPCQ32SI8N**

IC CONFIG DEVICE 32MBIT 8SOIC  
[Altera](#)

**RFQ**



**EPCQ16SI8N**

IC CONFIG DEVICE 16MBIT 8SOIC  
[Altera](#)

**RFQ**



**EPCQL1024F24IN**

IC QUAD-SERIAL LOW VOLTAGE CONF  
[Altera](#)

**RFQ**



**EPCQ64SI16N**

IC CONFIG DEVICE 64MBIT 16SOIC  
[Altera](#)

**RFQ**



**EPCQ16N**

[ST](#)

**RFQ**



**EPCQ256SI16N**

IC CONFIG DEVICE 256MBIT 16SOIC  
[Altera](#)

**RFQ**



**EPCQ64ASI16N**

[ALTERA12](#)

**RFQ**



**EPCQ4ASI8N**

[ALTERA11](#)

**RFQ**



**EPCQ512SI16N**

IC QUAD-SERIAL CONFIG DEVICE 512  
[Altera](#)

**RFQ**

### Guess You May Looking For



**AT1206DRE0757K6L**

RES SMD 57.6K OHM 0.5% 1/4W 1206  
[Yageo](#)

**RFQ**



**AT1206DRE0711KL**

RES SMD 11K OHM 0.5% 1/4W 1206  
[Yageo](#)

**RFQ**



**RT0603CRD07113KL**

RES SMD 113KOHM 0.25% 1/10W 0603  
[Yageo](#)

**RFQ**



**RT0603CRD071K47L**

RES SMD 1.47K OHM 1/10W 0603  
[Yageo](#)

**RFQ**



**RT0603CRD07374RL**

RES SMD 374 OHM 0.25% 1/10W 0603  
[Yageo](#)

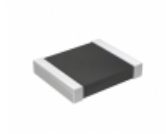
**RFQ**



**CRGH2010F82R5**

RES SMD 82.5 OHM 1% 1W 2010  
[TE Connectivity Passive Product](#)

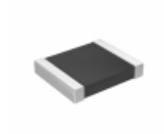
**RFQ**



**RT1210FRD0716R5L**

RES SMD 16.5 OHM 1% 1/4W 1210  
[Yageo](#)

**RFQ**



**RT1210FRD07360RL**

RES SMD 360 OHM 1% 1/4W 1210  
[Yageo](#)

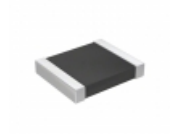
**RFQ**



**CRGH2010F5K11**

RES SMD 5.11K OHM 1% 1W 2010  
[TE Connectivity Passive Product](#)

**RFQ**



**RT1210FRD07340KL**

RES SMD 340K OHM 1% 1/4W 1210  
[Yageo](#)

**RFQ**