

MAX1749EUK-T



[Maxim Integrated](#)

IC MOTOR DRIVER VIBRATOR SOT23-5

Contains lead / RoHS non-compliant

Integrated Circuits (ICs)

[1.MAX1749EUK-T.pdf](#)

[2.MAX1749EUK-T.pdf](#)

[Buy Now](#)

We can supply MAX1749EUK-T, use the request quote form to request MAX1749EUK-T price and lead time. Zeano is a professional electronic components distributor. With 3+ Million line items of available electronic components can ship in short lead-time, over 250 thousand part numbers of electronic components in stock for immediately delivery, which may include part number MAX1749EUK-T. The price and lead time for MAX1749EUK-T depending on the quantity required and warehouse location. Contact us and our sales representative will provide you price. We look forward to work with you.

Shopping Process

1

Confirm the product

2

submit the order

3

payment

4

wait for delivery

5

receive the goods

Specifications

Voltage - Supply:	2.5 V ~ 6.5 V
Voltage - Load:	1.13 V ~ 1.37 V
Technology:	PMOS
Supplier Device Package:	SOT-23-5
Step Resolution:	-
Series:	-
Packaging:	Tape & Reel (TR)
Package / Case:	SC-74A, SOT-753
Output Configuration:	High Side
Operating Temperature:	-40°C ~ 85°C (TA)
Mounting Type:	Surface Mount
Motor Type - Stepper:	-
Motor Type - AC, DC:	Brushed DC
Interface:	On/Off
Function:	Driver - Fully Integrated, Control and Power Stage
Current - Output:	120mA
Applications:	Haptic Feedback

Related products



MAX174ACPI
IC ADC 12-BIT W/REF 28-DIP
[Maxim Integrated](#)

RFQ



MAX17499BEUB+T
IC REG CTRLR BOOST/SEPIC 10UMAX
[Maxim Integrated](#)

RFQ



MAX174ACPI+
[MAXIM](#)

RFQ



MAX1749EUK+T
[MAXIM](#)

RFQ



MAX1749EUK
[MAXIM](#)

RFQ



MAX174ACPI
in stock
[MAXIM](#)

RFQ



MAX17499BEUB+
IC REG CTRLR BOOST/SEPIC 10UMAX
[Maxim Integrated](#)

RFQ



MAX174ACWI
IC ADC 12-BIT W/REF 28-SOIC
[Maxim Integrated](#)

RFQ



MAX174ACWI
in stock
[MAXIM](#)

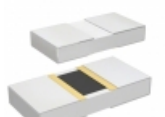
RFQ



MAX1749EUK+
in stock
[MAXIM](#)

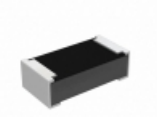
RFQ

Guess You May Looking For



PHP00805H4270BST1
RES SMD 427 OHM 0.1% 5/8W 0805
[Vishay Thin Film](#)

RFQ



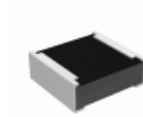
RCP0603B62R0GEA
RES SMD 62 OHM 2% 3.9W 0603
[Vishay Dale](#)

RFQ



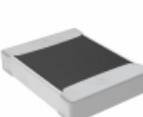
RP73D1J21RBTG
RES SMD 21 OHM 0.1% 1/10W 0603
[TE Connectivity Passive Product](#)

RFQ



RCP0505B680RGTP
RES SMD 680 OHM 2% 5W 0505
[Vishay Dale](#)

RFQ



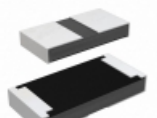
TNPW12104K12BEEN
RES SMD 4.12K OHM 0.1% 1/3W 1210
[Vishay Dale](#)

RFQ



RP73D1J9R76BTG
RES SMD 9.76 OHM 0.1% 1/10W 0603
[TE Connectivity Passive Product](#)

RFQ



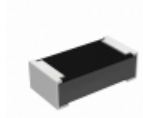
RCP1206W200RGS3
RES SMD 200 OHM 2% 11W 1206
[Vishay Dale](#)

RFQ



PWR1913W36R5F
RES SMD 36.5 OHM 1% 1/2W 1913
[Bourns Inc.](#)

RFQ



RCP0603B510RJS3
RES SMD 510 OHM 5% 3.9W 0603
[Vishay Dale](#)

RFQ



RT1206WRC0743KL
RES SMD 43K OHM 0.05% 1/4W 1206
[Yageo](#)

RFQ