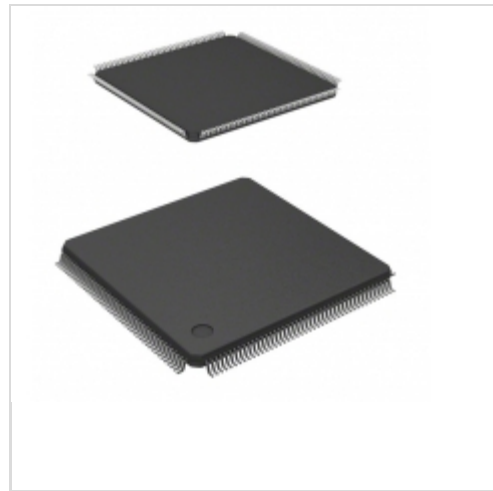


DS72011RB120FPV

Renesas Electronics America

IC MCU 32BIT ROMLESS 176LFQFP

Lead free / RoHS Compliant

Integrated Circuits (ICs)

[DS72011RB120FPV.pdf](#)
Buy Now

Images are for reference only.

See Product Specifications for product details.

If you are interested to buy DS72011RB120FPV, Just Email us.

Sales@zeanoit.com

our sales team will reply you within 24 hours

Out Stock
0 pcs

Minimum:1

Multiples:100

Manufacturer lead time 10 weeks

Shopping Process
1
Confirm the product
2
submit the order
3
payment
4
wait for delivery
5
receive the goods
Specifications

Voltage - Supply (Vcc/Vdd):	3 V ~ 3.6 V
Supplier Device Package:	176-LFQFP (24x24)
Speed:	120MHz
Series:	SuperH® SH7200
RAM Size:	32K x 8
Program Memory Type:	ROMless
Program Memory Size:	-
Peripherals:	DMA, POR, PWM, WDT
Packaging:	Tray
Package / Case:	176-LQFP
Oscillator Type:	Internal
Operating Temperature:	-20°C ~ 70°C (TA)
Number of I/O:	104
EEPROM Size:	-
Data Converters:	A/D 8x10b; D/A 2x8b
Core Size:	32-Bit
Core Processor:	SH-2A
Connectivity:	CAN, EBI/EMI, FIFO, I ² C, SCI, Serial Sound

Related products
DS72611P100FPV

in stock

[RENESAS](#)
RFQ

DS70850AD80FPV

IC MCU 32BIT ROMLESS 144LFQFP

[Renesas Electronics America](#)
RFQ

DS72011RW100FPV

IC MCU 32BIT ROMLESS 176LFQFP

[Renesas Electronics America](#)
RFQ
DS75

2.Wire Thermal Watchdog

[DALLAS](#)
RFQ

DS7066

in stock

[DS](#)
RFQ

DS72611RP100FPV

IC MCU 32BIT ROMLESS 176LFQFP

[Renesas Electronics America](#)
RFQ

DS72060W200FPV

IC MCU 32BIT ROMLESS 176LFQFP

[Renesas Electronics America](#)
RFQ

DS70830AN80FTV

IC MCU 32BIT ROMLESS 100TQFP

[Renesas Electronics America](#)
RFQ
DS75-08B

DIODE GEN PURP 800V 110A DO203AB

[IXYS](#)
RFQ

DS72613RB120FPV

IC MCU 32BIT ROMLESS 176LFQFP

[Renesas Electronics America](#)
RFQ
Guess You May Looking For

CS1613A-FSZ

IC LED DRIVER OFFL DIM 16SOIC

[Cirrus Logic Inc.](#)
RFQ

DRV10975ZPWPR

IC MOTOR DRIVER PWM 24HTSSOP

[Texas Instruments](#)
RFQ

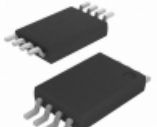
MIC2016-0.8YML-TR

IC DISTRIBUTION SW 0.8A 6-MLF

[Microchip Technology](#)
RFQ

MAX6376XR26+T

IC VOLT DETECT LP 2.63V SC70-3

[Maxim Integrated](#)
RFQ

X40415V8-CT1

IC VOLTAGE MON DUAL W/SUP 8TSSOP

[Intersil](#)
RFQ

S-80924CNPF-G8UTFG

IC VOLT DETECTOR 2.4V SNT-4A

[SII Semiconductor Corporation](#)
RFQ

LM4040BIM3-3.0/NOBP

IC VREF SHUNT 3V SOT23-3

[Texas Instruments](#)
RFQ

LM4040DIZ-4.1

IC VREF SHUNT 4.096V TO92-3

[Texas Instruments](#)
RFQ

ICL7660ESA+T

IC REG SWITCHD CAP INV 20MA 8SOIC

[Maxim Integrated](#)
RFQ

AS1369-BWLT-30

IC REG LDO 3V 0.2A 4WLCSP

[ams](#)
RFQ

