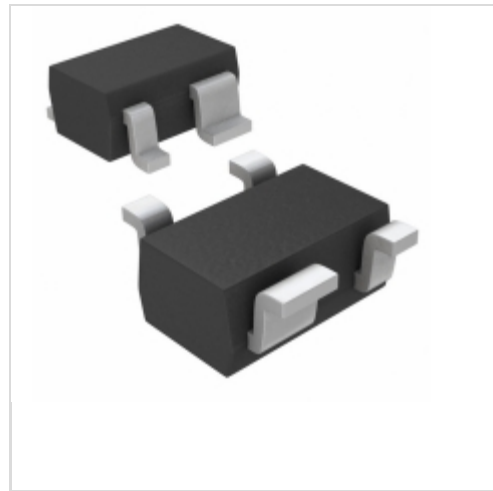


## MAX6713LEXS+T10



**Maxim Integrated**

IC RESET MPU W/RESET SC70-4  
Lead free / RoHS Compliant  
Integrated Circuits (ICs)

- [1.MAX6713LEXS+T10.pdf](#)
- [2.MAX6713LEXS+T10.pdf](#)

**Buy Now**

Images are for reference only.

See Product Specifications for product details.

If you are interested to buy MAX6713LEXS+T10,Just Email us.

Sales@zeanoit.com

our sales team will reply you within 24 hours

### Shopping Process

**1**

Confirm the product

**2**

submit the order

**3**

payment

**4**

wait for delivery

**5**

receive the goods

### Specifications

<b>Voltage - Threshold:</b>	4.63V
<b>Type:</b>	Simple Reset/Power-On Reset
<b>Supplier Device Package:</b>	SC-70-4
<b>Series:</b>	-
<b>Reset Timeout:</b>	140 ms Minimum
<b>Reset:</b>	Active Low
<b>Packaging:</b>	Tape & Reel (TR)
<b>Package / Case:</b>	SC-82A, SOT-343
<b>Output:</b>	Open Drain or Open Collector
<b>Operating Temperature:</b>	-40°C ~ 125°C (TA)
<b>Number of Voltages Monitored:</b>	1
<b>Mounting Type:</b>	Surface Mount

### Related products



**MAX6713REXS+T**  
IC MPU/RESET CIRC SC70-4  
[Maxim Integrated](#)

RFQ



**MAX6713MEXS+T**  
IC MPU/RESET CIRC SC70-4  
[Maxim Integrated](#)

RFQ



**MAX6713M**  
in stock  
[MAXIM](#)

RFQ



**MAX6712\_EXS-T10**  
in stock  
[MAXIM](#)

RFQ



**MAX6713R**  
in stock  
[MAXIM](#)

RFQ



**MAX6712\_EXS-T**  
in stock  
[MAXIM](#)

RFQ



**MAX6713REXS-T**  
in stock  
[MAXIM](#)

RFQ



**MAX6713L**  
in stock  
[MAXIM](#)

RFQ



**MAX6713**  
in stock  
[MAXIM](#)

RFQ



**MAX6713LEXS+T**  
IC MPU/RESET CIRC SC70-4  
[Maxim Integrated](#)

RFQ

### Guess You May Looking For



**9T04021A4122CBHF3**  
RES SMD 41.2K OHM 1/16W 0402  
[Yageo](#)

RFQ



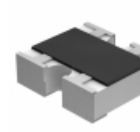
**MCR03EZPF18R7**  
RES SMD 18.7 OHM 1% 1/10W 0603  
[Rohm Semiconductor](#)

RFQ



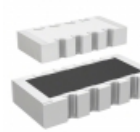
**RG1608N-2612-B-T1**  
RES SMD 26.1KOHM 0.1% 1/10W 0603  
[Susumu](#)

RFQ



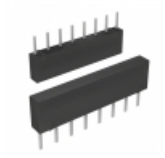
**EXB-24V330JX**  
RES ARRAY 2 RES 33 OHM 0404  
[Panasonic Electronic Components](#)

RFQ



**CAY16-5492F4LF**  
RES ARRAY 4 RES 54.9K OHM 1206  
[Bourns Inc.](#)

RFQ



**4308M-102-821**  
RES ARRAY 4 RES 820 OHM 8SIP  
[Bourns Inc.](#)

RFQ



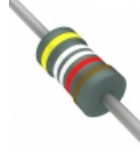
**4818P-1-950**  
RES ARRAY 9 RES 95 OHM 18SOIC  
[Bourns Inc.](#)

RFQ



**CFR50J220R**  
RES 220 OHM 1/2W 5% AXIAL  
[TE Connectivity Passive Product](#)

RFQ



**RNF18FTC49K9**  
RES 49.9K OHM 1/8W 1% AXIAL  
[Stackpole Electronics Inc.](#)

RFQ



**CMF55147K00FHRE**  
RES 147K OHM 1/2W 1% AXIAL  
[Vishay Dale](#)

RFQ