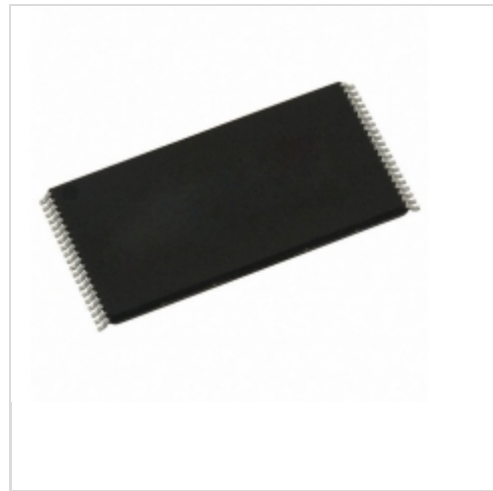


**IS41LV16256C-35TLI-TR**

**ISSI (Integrated Silicon Solution, Inc.)**

 IC DRAM 4MBIT 35NS 40TSOP  
 Lead free / RoHS Compliant  
 Integrated Circuits (ICs)

 [IS41LV16256C-35TLI-TR.pdf](#)
**Out Stock**
**0 pcs**

Minimum:1

Multiples:100

Manufacturer lead time 10 weeks

part#IS41LV16256C-35TLI-TR is available, see description of IS41LV16256C-35TLI-TR as below .

use the request quote form to request IS41LV16256C-35TLI-TR price and lead time. Buy Electronic Components at zeanoit.com .we are an independent distributor of electronic components with extensive inventory in stock.

The price and lead time for IS41LV16256C-35TLI-TR depending on the quantity required, availability and warehouse location.Contact us today and our sales team will send you quotation soon.

Email: sales@zeanoit.com

## Shopping Process

**1**
**Confirm the product**
**2**
**submit the order**
**3**
**payment**
**4**
**wait for delivery**
**5**
**receive the goods**

## Specifications

<b>Voltage - Supply:</b>	3 V ~ 3.6 V
<b>Supplier Device Package:</b>	40-TSOP
<b>Speed:</b>	35ns
<b>Series:</b>	-
<b>Packaging:</b>	Tape & Reel (TR)
<b>Package / Case:</b>	44-TSOP (0.400", 10.16mm Width), 40 Leads
<b>Operating Temperature:</b>	-40°C ~ 85°C (TA)
<b>Memory Type:</b>	Volatile
<b>Memory Size:</b>	4Mb (256K x 16)
<b>Memory Format:</b>	DRAM
<b>Interface:</b>	Parallel

## Related products

**IS41LV16257-35TI**

in stock

[ISSI](#)

RFQ

**IS41LV16257-35T**

in stock

[ISSI](#)

RFQ

**IS41LV16256B-60T**

in stock

[ISSI](#)

RFQ

**IS41LV16257-35KI**

in stock

[ISSI](#)

RFQ


**IS41LV16256C-35TLI**

IC DRAM 4MBIT 35NS 40TSOP

[ISSI, Integrated Silicon Solution Inc](#)

RFQ

**IS41LV16257**

in stock

[ISSI](#)

RFQ

**IS41LV16256B-60K**

in stock

[ISSI](#)

RFQ

**IS41LV16256B-60KL**

in stock

[ISSI](#)

RFQ

**IS41LV16256B-60TL**

in stock

[ISSI](#)

RFQ

**IS41LV16257-35K**

in stock

[ISSI](#)

RFQ

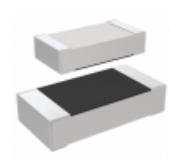
## Guess You May Looking For


**RC1005F4991CS**

RES SMD 4.99K OHM 1% 1/16W 0402

[Samsung Electro-Mechanics America, Inc.](#)

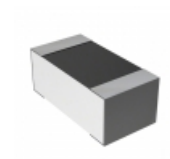
RFQ


**RC3216J685CS**

RES SMD 6.8M OHM 5% 1/4W 1206

[Samsung Electro-Mechanics America, Inc.](#)

RFQ


**4-2176088-5**

RES SMD 2.55K OHM 0.1% 1/6W 0603

[TE Connectivity Passive Product](#)

RFQ


**AA0402JR-078R2L**

RES SMD 8.2 OHM 5% 1/16W 0402

[Yageo](#)

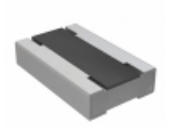
RFQ


**AA0402FR-0743R2L**

RES SMD 43.2 OHM 1% 1/16W 0402

[Yageo](#)

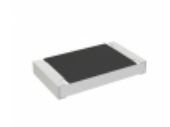
RFQ


**RCL04062K74FKEA**

RES SMD 2.74K OHM 1/4W 0604 WIDE

[Vishay Dale](#)

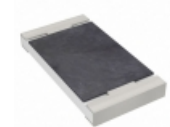
RFQ


**RCS080533R0JNEA**

RES SMD 33 OHM 5% 0.4W 0805

[Vishay Dale](#)

RFQ


**AC2010JK-07120RL**

RES SMD 120 OHM 5% 3/4W 2010

[Yageo](#)

RFQ


**RG2012P-1781-D-T5**

RES SMD 1.78K OHM 0.5% 1/8W 0805

[Susumu](#)

RFQ


**CRCW121022R1FKTA**

RES SMD 22.1 OHM 1% 1/2W 1210

[Vishay Dale](#)

RFQ