

**SL869V2S210T001**



**Navman Wireless (Telit Wireless Solutions)**

WIRELESS MODULE  
Lead free / RoHS Compliant  
RF/IF and RFID

- [1.SL869V2S210T001.pdf](#)
- [2.SL869V2S210T001.pdf](#)
- [3.SL869V2S210T001.pdf](#)
- [4.SL869V2S210T001.pdf](#)
- [5.SL869V2S210T001.pdf](#)
- [6.SL869V2S210T001.pdf](#)
- [7.SL869V2S210T001.pdf](#)
- [8.SL869V2S210T001.pdf](#)
- [9.SL869V2S210T001.pdf](#)
- [10.SL869V2S210T001.pdf](#)

**Buy Now**

part#SL869V2S210T001 is available, see description of SL869V2S210T001 as below . use the request quote form to request SL869V2S210T001 price and lead time. Buy Electronic Components at zeanoit.com .we are an independent distributor of electronic components with extensive inventory in stock. The price and lead time for SL869V2S210T001 depending on the quantity required, availability and warehouse location.Contact us today and our sales team will send you quotation soon.  
Email: sales@zeanoit.com

Shopping Process

**1**

Confirm the product

**2**

submit the order

**3**

payment

**4**

wait for delivery

**5**

receive the goods

Specifications

<b>Voltage - Supply:</b>	3 V ~ 3.6 V
<b>Supplier Device Package:</b>	24-LCC (16x12.2)
<b>Series:</b>	Jupiter
<b>Sensitivity:</b>	-165dBm
<b>Packaging:</b>	Tape & Reel (TR)
<b>Package / Case:</b>	24-SMD Module
<b>Operating Temperature:</b>	-40°C ~ 85°C
<b>Modulation or Protocol:</b>	GPS, GLONASS, GNSS
<b>Memory Size:</b>	-
<b>Frequency:</b>	1.575GHz
<b>Features:</b>	-
<b>Data Rate (Max):</b>	-
<b>Data Interface:</b>	UART
<b>Current - Receiving:</b>	30mA
<b>Applications:</b>	General Purpose
<b>Antenna Connector:</b>	-

Related products



**SL869 V2**  
Telit

RFQ



**SL8801/11-111A5-00**  
CBL RIBN 10COND 0.093 SILVR 500'  
3M

RFQ



**SL8801/11-101A5-00**  
CBL RIBN 10COND 0.093 SILVR 500'  
3M

RFQ



**SL8801/12-10DA5-00**  
CBL TWINAX SIDE BND 4PR SLVR 500'  
3M

RFQ



**SL869GNS315T002**  
JUPITER SL869 GNSS RX MOD  
Telit Wireless Solutions, Inc.

RFQ



**SL8801/12-101A5-00**  
CBL RIBN 8COND 0.093 SILVER 500'  
3M

RFQ



**SL880**  
SWITCH SLIDE SP8T 250MA 125V  
TE Connectivity ALCOSWITCH Switches

RFQ



**SL869GNS315R002**  
JUPITER SL869 GNSS RX MOD  
Telit Wireless Solutions, Inc.

RFQ



**SL869GNS312T001**  
JUPITER SL869 GNSS RX MOD  
Telit Wireless Solutions, Inc.

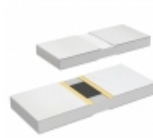
RFQ



**SL869GNS115T001**  
MOD RX JUPITER SL869 GNSS 24LCC  
Telit Wireless Solutions, Inc.

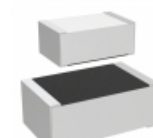
RFQ

Guess You May Looking For



**PHP01206E49R9BBT5**  
RES SMD 49.9 OHM 0.1% 1W 1206  
Vishay Thin Film

RFQ



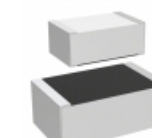
**M55342K06B392DRT5V**  
RES SMD 392 OHM 1% 0.15W 0705  
Vishay Dale

RFQ



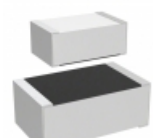
**PFC10-620RF1**  
RES SMD 620 OHM 1% 25W PFC10  
Riedon

RFQ



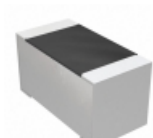
**M55342E06B13B0RT5**  
RES SMD 13K OHM 0.1% 0.15W 0705  
Vishay Dale

RFQ



**M55342E06B93B1RT5**  
RES SMD 93.1KOHM 0.1% 0.15W 0805  
Vishay Dale

RFQ



**M55342H12B26E7RT5**  
RES SMD 26.7K OHM 1% 1/10W 0603  
Vishay Dale

RFQ



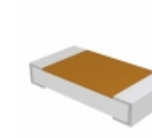
**HVS1206-470MK1**  
RES SMD 470M OHM 10% 1/4W 1206  
Riedon

RFQ



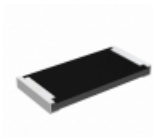
**RG3216V-6491-P-T1**  
RES SMD 6.49KOHM 0.02% 1/4W 1206  
Susumu

RFQ



**D55342H07B18H0PT5**  
RES SMD 18K OHM 2% 1/4W 1206  
Vishay Dale

RFQ



**RCP2512B18R0JS2**  
RES SMD 18 OHM 5% 22W 2512  
Vishay Dale

RFQ

