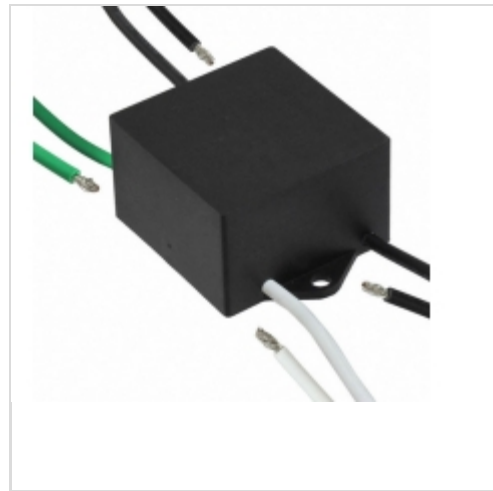


**LSP10277S**



[Hamlin / Littelfuse](#)

**SURGE PROTECTOR 10KA 277V SERS**

Lead free / RoHS Compliant

Circuit Protection

[1.LSP10277S.pdf](#)

[2.LSP10277S.pdf](#)

**Buy Now**

**In Stock**

**83 pcs**

Minimum:1

Multiples:100

Manufacturer lead time 10 weeks

**PRICE**

|         |          |
|---------|----------|
| 1 pcs   | \$22.20  |
| 10 pcs  | \$20.535 |
| 25 pcs  | \$18.87  |
| 100 pcs | \$17.538 |
| 250 pcs | \$16.095 |
| 500 pcs | \$15.318 |

Images are for reference only.

See Product Specifications for product details.

If you are interested to buy LSP10277S,Just Email us.

Sales@zeanoit.com

our sales team will reply you within 24 hours

**Shopping Process**

**1**

**Confirm the product**

**2**

**submit the order**

**3**

**payment**

**4**

**wait for delivery**

**5**

**receive the goods**

**Specifications**

|                                 |                          |
|---------------------------------|--------------------------|
| <b>Voltage - Clamping:</b>      | -                        |
| <b>Voltage:</b>                 | 277V                     |
| <b>Technology:</b>              | Surge Protector          |
| <b>Supplier Device Package:</b> | Module                   |
| <b>Series:</b>                  | LSP                      |
| <b>Packaging:</b>               | Tray                     |
| <b>Package / Case:</b>          | Module, Wire Leads       |
| <b>Number of Circuits:</b>      | 1                        |
| <b>Mounting Type:</b>           | Chassis Mount, Wire Lead |
| <b>Applications:</b>            | LED Drivers, AC/DC SMPS  |

**Related products**



**LSP10277PX3333**  
SURGE PROTECTOR 10KA 277V PARL  
[Littelfuse Inc.](#)

RFQ



**LSP10277SX3316**  
SURGE PROTECTOR 10KA 277V SERS  
[Littelfuse Inc.](#)

RFQ



**LSP10277SX3333**  
SURGE PROTECTOR 10KA 277V SERS  
[Littelfuse Inc.](#)

RFQ



**LSP10480LLP**  
SURGE PROTECTOR 10KA 480V PARL  
[Littelfuse Inc.](#)

RFQ



**LSP10240SX3333**  
SURGE PROTECTOR 10KA 240V SERS  
[Littelfuse Inc.](#)

RFQ



**LSP10240SX3316**  
SURGE PROTECTOR 10KA 240V SERS  
[Littelfuse Inc.](#)

RFQ



**LSP10347P**  
SURGE PROTECTOR 10KA 347V PARL  
[Littelfuse Inc.](#)

RFQ



**LSP10277P**  
SURGE PROTECTOR 10KA 277V PARL  
[Littelfuse Inc.](#)

RFQ



**LSP10347S**  
SURGE PROTECTOR 10KA 347V SERS  
[Littelfuse Inc.](#)

RFQ



**LSP10277PX3316**  
SURGE PROTECTOR 10KA 277V PARL  
[Littelfuse Inc.](#)

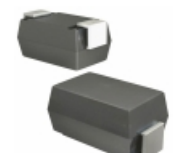
RFQ

**Guess You May Looking For**



**SMAJ170CA-TP**  
TVS DIODE 170VWM 275VC SMA  
[Micro Commercial Co](#)

RFQ



**SMAJ100A-TP**  
TVS DIODE 100VWM 162VC SMA  
[Micro Commercial Co](#)

RFQ



**SMAJ8.0A-TP**  
TVS DIODE 8VWM 13.6VC SMA  
[Micro Commercial Co](#)

RFQ



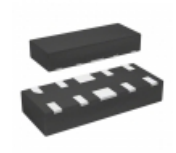
**SMAJ36A-13-F**  
TVS DIODE 36VWM 58.1VC SMA  
[Diodes Incorporated](#)

RFQ



**SMAJ90A-TP**  
TVS DIODE 90VWM 146VC SMA  
[Micro Commercial Co](#)

RFQ



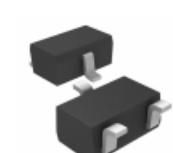
**ESD8004MUTAG**  
TVS DIODE 3.3VWM 8VC 10-DFN  
[ON Semiconductor](#)

RFQ



**SMCJ22A**  
TVS DIODE 22VWM 35.5VC SMC  
[Littelfuse Inc.](#)

RFQ



**RSB27F2T106**  
TVS DIODE 24VWM UMD3  
[Rohm Semiconductor](#)

RFQ



**1.5SMC10CA-E3/57T**  
TVS DIODE 8.55VWM 14.5VC DO214AB  
[Vishay Semiconductor Diodes Division](#)

RFQ



**824521361**  
TVS DIODE 36VWM 58.1VC DO214AA  
[Würth Electronics Inc.](#)

RFQ