

NCP1937C4DR2G



[AMI Semiconductor / ON Semiconductor](#)

IC CTRL PFC/FLYBACK
Lead free / RoHS Compliant
Integrated Circuits (ICs)

[NCP1937C4DR2G.pdf](#)

Buy Now

We can supply NCP1937C4DR2G, use the request quote form to request NCP1937C4DR2G price and lead time. Zeano is a professional electronic components distributor. With 3+ Million line items of available electronic components can ship in short lead-time, over 250 thousand part numbers of electronic components in stock for immediately delivery, which may include part number NCP1937C4DR2G. The price and lead time for NCP1937C4DR2G depending on the quantity required and warehouse location. Contact us and our sales representative will provide you price. We look forward to work with you.

Out Stock
0 pcs
Minimum: 1
Multiples: 100
Manufacturer lead time 10 weeks

Shopping Process

1

Confirm the product

2

submit the order

3

payment

4

wait for delivery

5

receive the goods

Specifications

Voltage - Supply:	9 V ~ 30 V
Supplier Device Package:	20-SOIC
Series:	-
Packaging:	Tape & Reel (TR)
Package / Case:	20-LSOP (0.154", 3.90mm Width) 17 Leads
Operating Temperature:	-40°C ~ 125°C
Mounting Type:	Surface Mount
Mode:	Critical Conduction (CRM)
Frequency - Switching:	-
Current - Startup:	20mA

Related products



NCP21WB333J03RA/NTH5G2M40
[MURATA](#)

RFQ



NCP1937C1DR2G
IC CTRL PFC/FLYBACK
[ON Semiconductor](#)

RFQ



NCP1937B2DR2G
IC CTRL PFC/FLYBACK
[ON Semiconductor](#)

RFQ



NCP21WB333J03RA
NTC THERMISTOR 33K OHM 5% 0805
[Murata Electronics North America](#)

RFQ



NCP21WB473J03RA
NTC THERMISTOR 47K OHM 5% 0805
[Murata Electronics North America](#)

RFQ



NCP21WB333K03RA
in stock
[MURATA](#)

RFQ



NCP1937B3DR2G
IC CTRL PFC/FLYBACK
[ON Semiconductor](#)

RFQ



NCP1937C61DR2G
IC CTRL PFC/FLYBACK
[ON Semiconductor](#)

RFQ



NCP1937BADAPGEVB
BOARD EVAL FOR NCP1937
[ON Semiconductor](#)

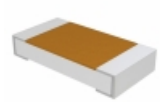
RFQ



NCP1937B1DR2G
IC COMBO CTRL ATX
[ON Semiconductor](#)

RFQ

Guess You May Looking For



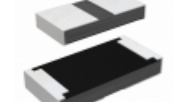
TNPU1206357KBZEN00
RES SMD 357K OHM 0.1% 1/4W 1206
[Vishay Dale](#)

RFQ



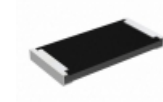
S3-2K21F8
RES SMD 2.21K OHM 1% 3W 6327
[Riedon](#)

RFQ



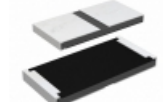
RCP1206W560RJEC
RES SMD 560 OHM 5% 11W 1206
[Vishay Dale](#)

RFQ



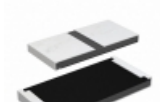
RCP2512B11R0JEB
RES SMD 11 OHM 5% 22W 2512
[Vishay Dale](#)

RFQ



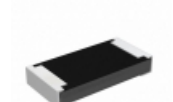
RCP2512W27R0JS3
RES SMD 27 OHM 5% 22W 2512
[Vishay Dale](#)

RFQ



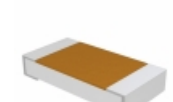
RCP2512W22R0GEB
RES SMD 22 OHM 2% 22W 2512
[Vishay Dale](#)

RFQ



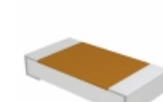
RCP1206B1K30GS2
RES SMD 1.3K OHM 2% 11W 1206
[Vishay Dale](#)

RFQ



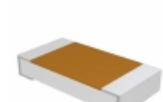
TNPU12063K48AZEN00
RES SMD 3.48KOHM 0.05% 1/4W 1206
[Vishay Dale](#)

RFQ



D55342K07B174ART1
RES SMD 174 OHM 0.1% 1/4W 1206
[Vishay Dale](#)

RFQ



D55342H07B2B55PT1
RES SMD 2.55K OHM 0.1% 1/4W 1206
[Vishay Dale](#)

RFQ